

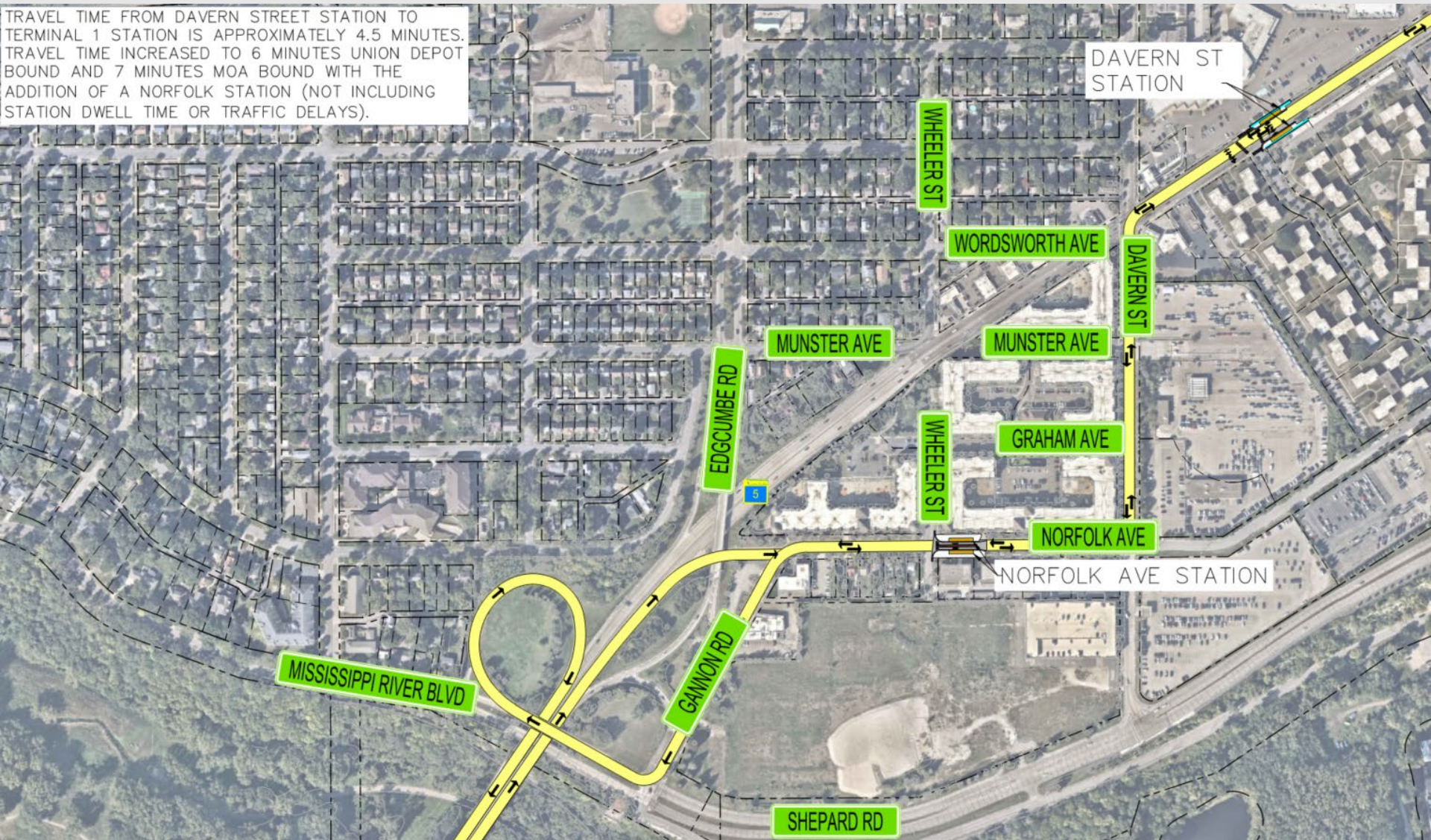
# Arterial Bus: West 7th Street



- Curbside station platforms.
- Shared lanes with traffic.
- Existing lane configuration.
- Bump-outs at stations to decrease crossing distances.
- Median refuge between station platforms implemented where possible.

# Arterial Bus: Norfolk Avenue Station

TRAVEL TIME FROM DAVERN STREET STATION TO TERMINAL 1 STATION IS APPROXIMATELY 4.5 MINUTES. TRAVEL TIME INCREASED TO 6 MINUTES UNION DEPOT BOUND AND 7 MINUTES MOA BOUND WITH THE ADDITION OF A NORFOLK STATION (NOT INCLUDING STATION DWELL TIME OR TRAFFIC DELAYS).





# Davern Street Station

Looking east towards  
West 7<sup>th</sup> Street  
and West Maynard Drive



**Randolph Avenue Station**  
Looking east towards  
West 7<sup>th</sup> Street & Toronto Street