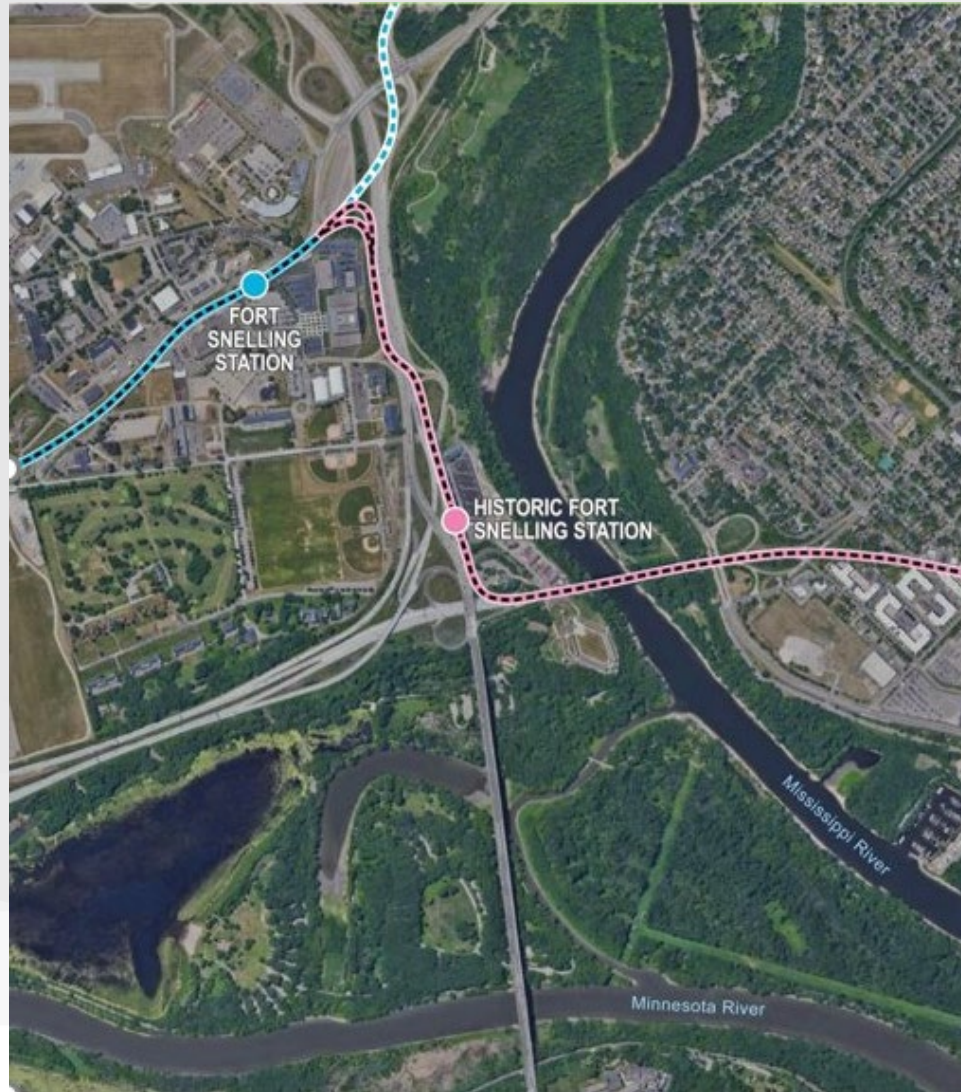
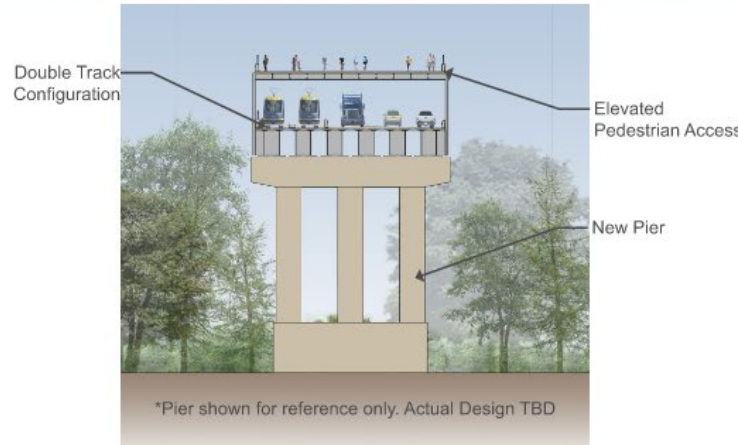
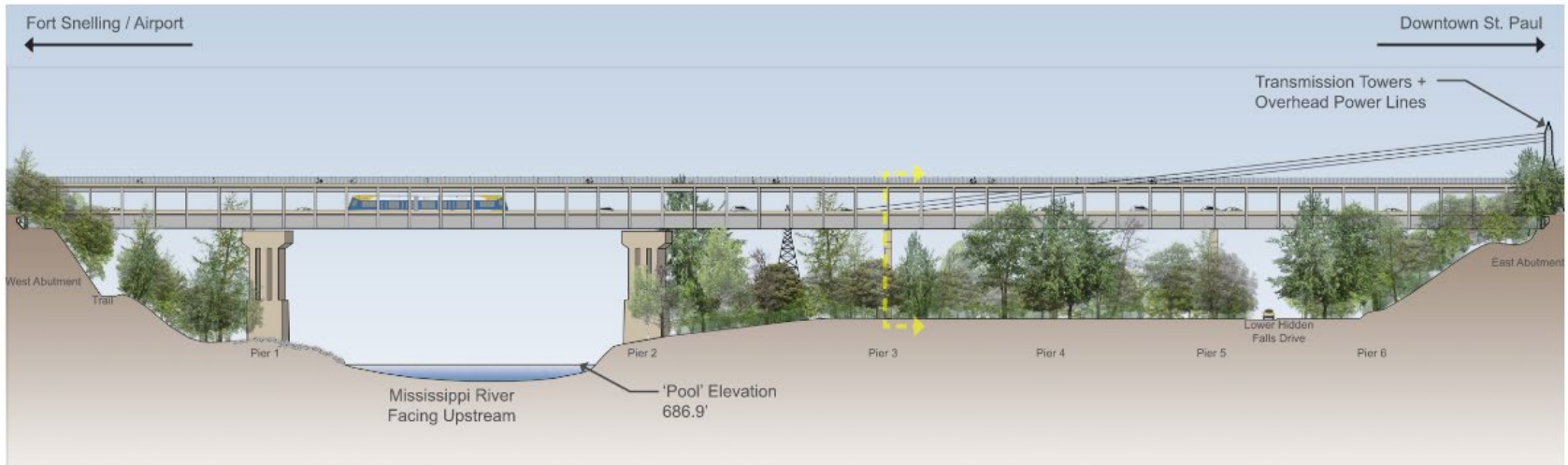


# Fort Snelling Area



# Highway 5 Bridge Concept



DRAFT - WORK IN PROCESS

## MISSISSIPPI RIVER BRIDGE CROSSING

CONCEPT 4 - DOUBLE DECK WITH CONTINUOUS STEEL BOX GIRDER

SEPTEMBER 26, 2022

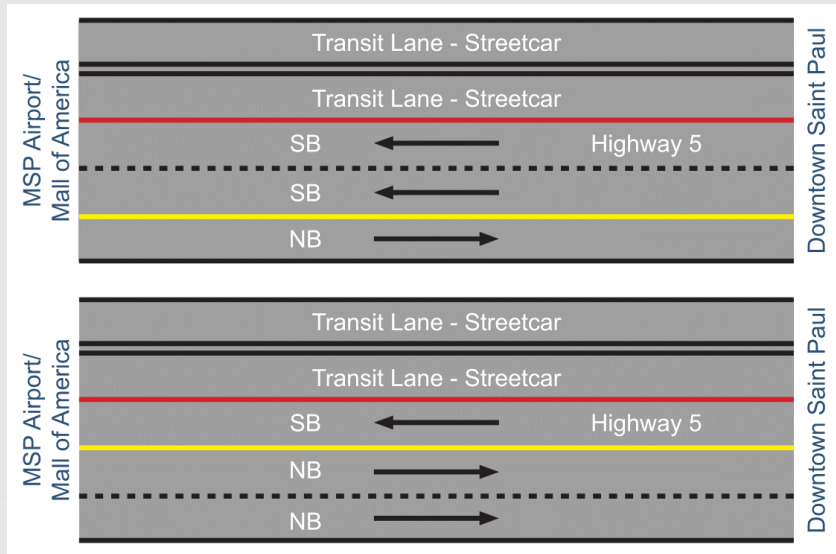
RAMSEY COUNTY



# Bridge Concept

- New replacement bridge with options for cost-sharing.
- Improves bike/pedestrian access and addresses ADA deficiencies.
- Opportunity for tribal and community programming on upper deck.
- Keeps existing tunnel intact to avoid rock impacts, per tribal partners.
- Five lanes available across bridge, including two dedicated transit lanes.
  - Single-track options not preferred by Metro Transit due to speed/reliability concerns.

# Use of Lanes Across the TH 5 Bridge



2 lanes toward airport,  
1 lane toward Saint Paul

2 lanes toward Saint Paul,  
1 lane toward airport

- High-level traffic forecasts = minimal difference between options.
- Two lanes toward Saint Paul preferred due to safety issues with Option 1.

# Ramp Removal: WB Highway 62 to SB Highway 5

- About 1,600-2,100 vehicles per day use ramp to access MSP Terminal 1.
- Ramp removal allows land connection to historic fort and improved bike/ped connections.



# Mitigation Considerations

- Re-route to TH 55 and back minimizes bedrock, visual, and other environmental impacts.
- Full mitigation (new flyover ramp) has environmental concerns and high cost.
- Future work would investigate other potential mitigation including signing/detour or other improvement.
- Project will need regional operational modeling to further understand impacts (future phase).