

South Shore Boulevard Trail Design Study

ONLINE OPEN HOUSE



PROJECT CONTEXT



PROJECT PURPOSE AND NEED

PURPOSE STATEMENT

To improve pedestrian and bicyclist connectivity, comfort, safety and access along and across South Shore Boulevard from White Bear Avenue to County Road F.



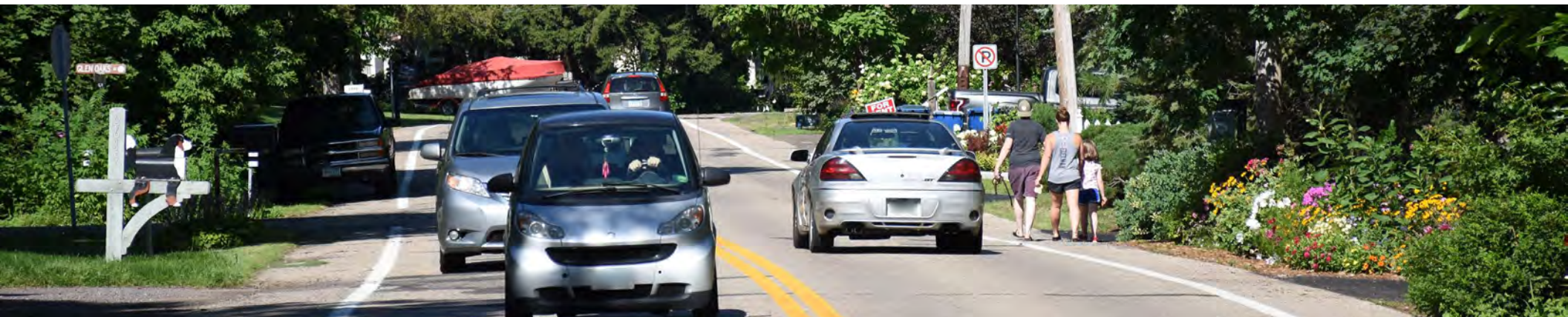
PROJECT NEEDS

- Establish pedestrian/bicycle facilities along South Shore Boulevard.
- South Shore Trail is identified as a future trail corridor in many local agency plans, but no separated bike/pedestrian facilities exist today.
- Improve neighborhood connections to the trail system and lake access.

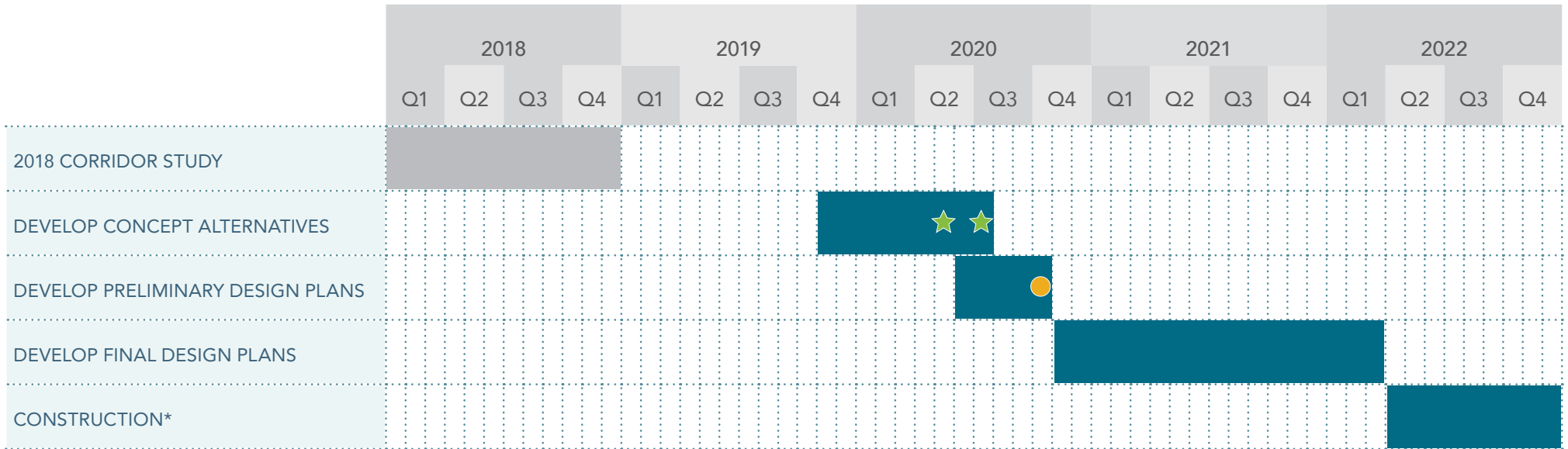


PROJECT GOALS/PRIORITIES

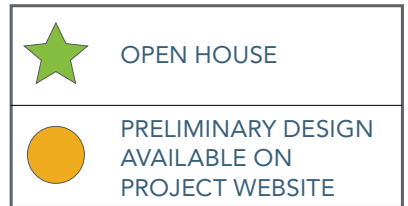
- Create a safe and comfortable walking/biking environment along and across South Shore Boulevard.
- Develop improvements that are financially feasible.
- Construct improvements that can be easily maintained.
- Maintain vehicle traffic mobility.
- Minimize property impacts.



SCHEDULE



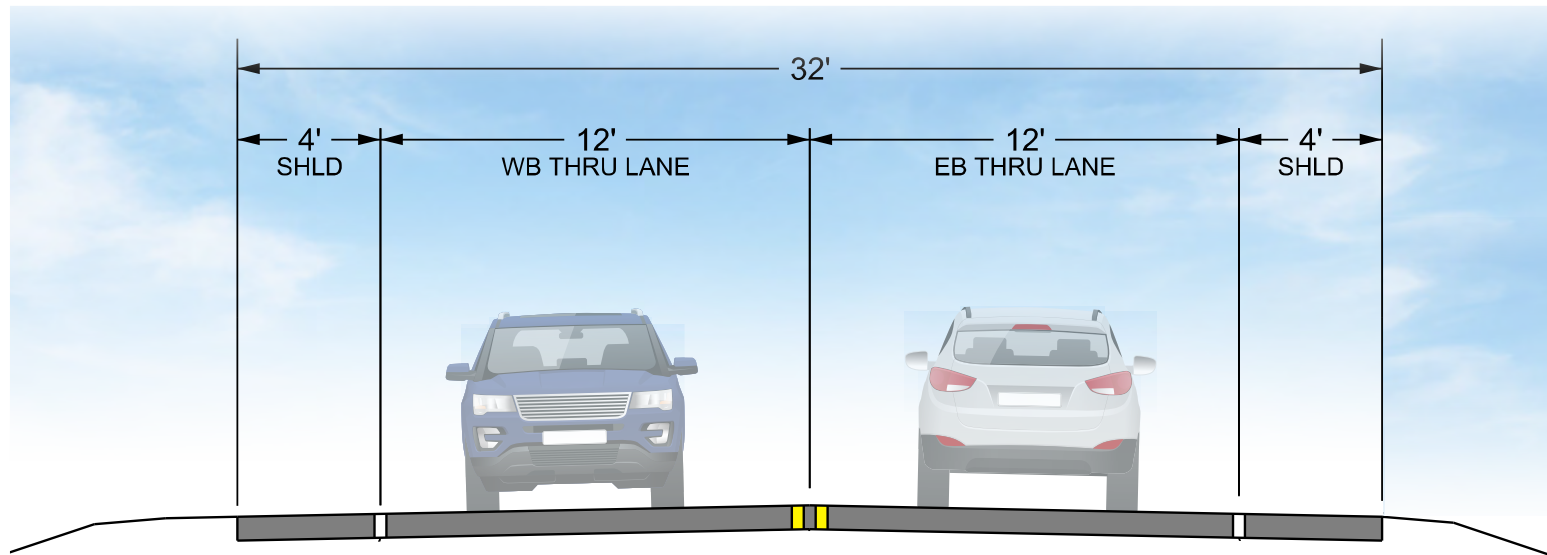
*Timing of construction dependent on availability of project funds



NEXT STEPS

Preferred concept will be presented
at the next open house in **July 2020**.

EXISTING CONDITIONS



EXISTING CONDITIONS



Utilities



Drainage



Vegetation



Bicycle and Pedestrian Facilities



Residential parking adjacent to roadway



Parking

DESIGN CONSIDERATIONS

CHARACTER:

How design affects the appearance and feel of the corridor.

ROADWAY CIRCULATION:

How design changes driving routes and access.

TRAIL EXPERIENCE:

How design affects the experience of pedestrians and bicyclists.

SAFETY:

How design could impact safety for all users - vehicles, bicycles and pedestrians.

SERVICES:

How design will impact:

- Mail/package delivery.
- School bus routes.
- Emergency services.
- Trash pickup.

MAINTENANCE:

How design will impact:

- Roadway and trail maintenance.
- Grass mowing.
- Snow plowing and removal.

COST OF PROPOSED IMPROVEMENTS:

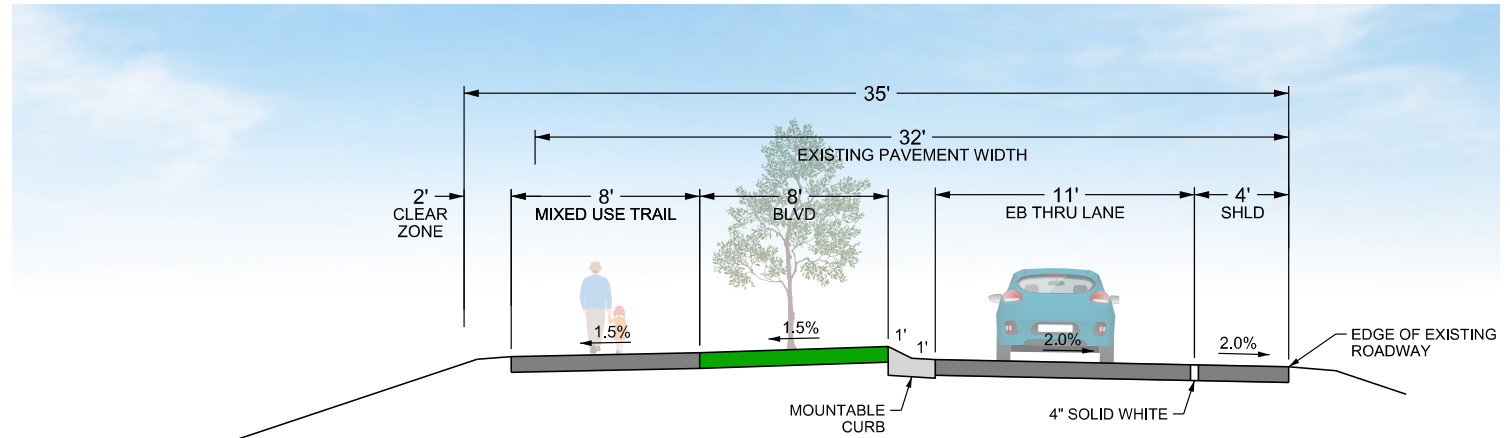
Evaluate feasibility of estimated construction cost.

ON-STREET PARKING:

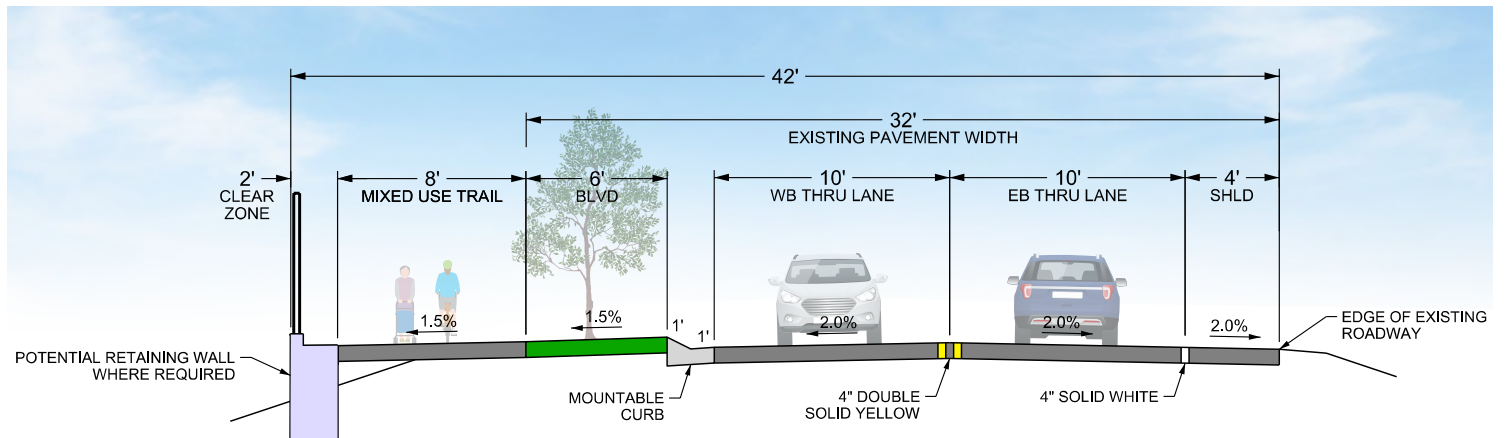
How design impacts on-street parking.

PROPOSED TYPICAL SECTIONS

ONE-WAY OPTION



TWO-WAY OPTION



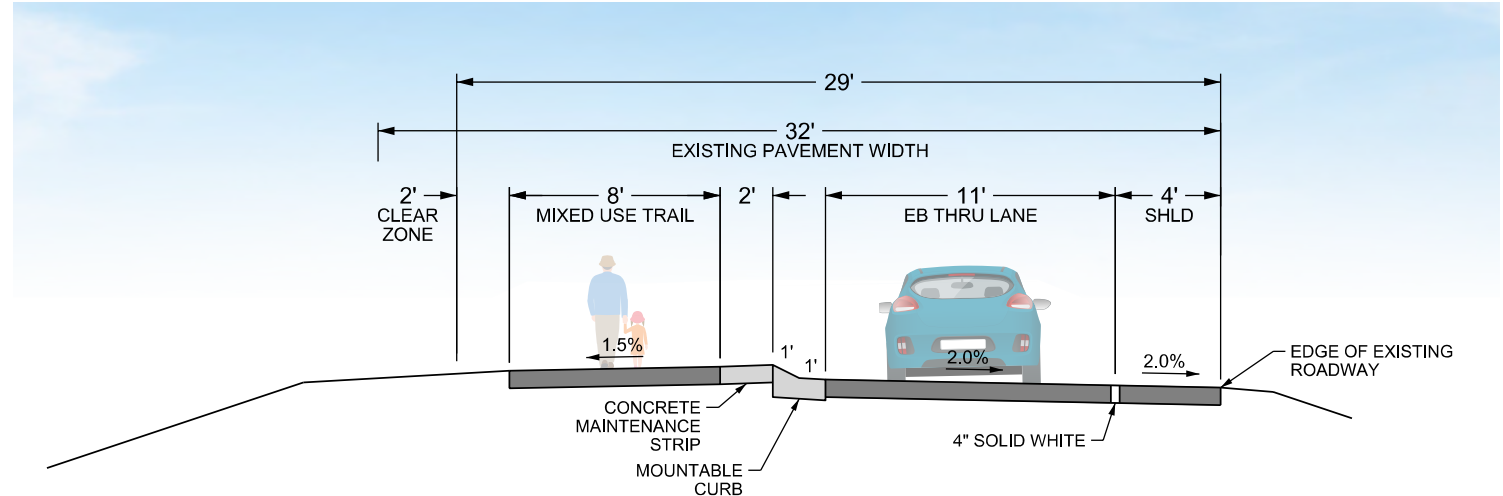
A hybrid option is being considered which includes a two-way roadway with trail from White Bear Avenue to McKnight Road and a one-way roadway with trail from McKnight Road to County Road F.

PROPOSED TYPICAL SECTIONS IN CONSTRAINED AREAS

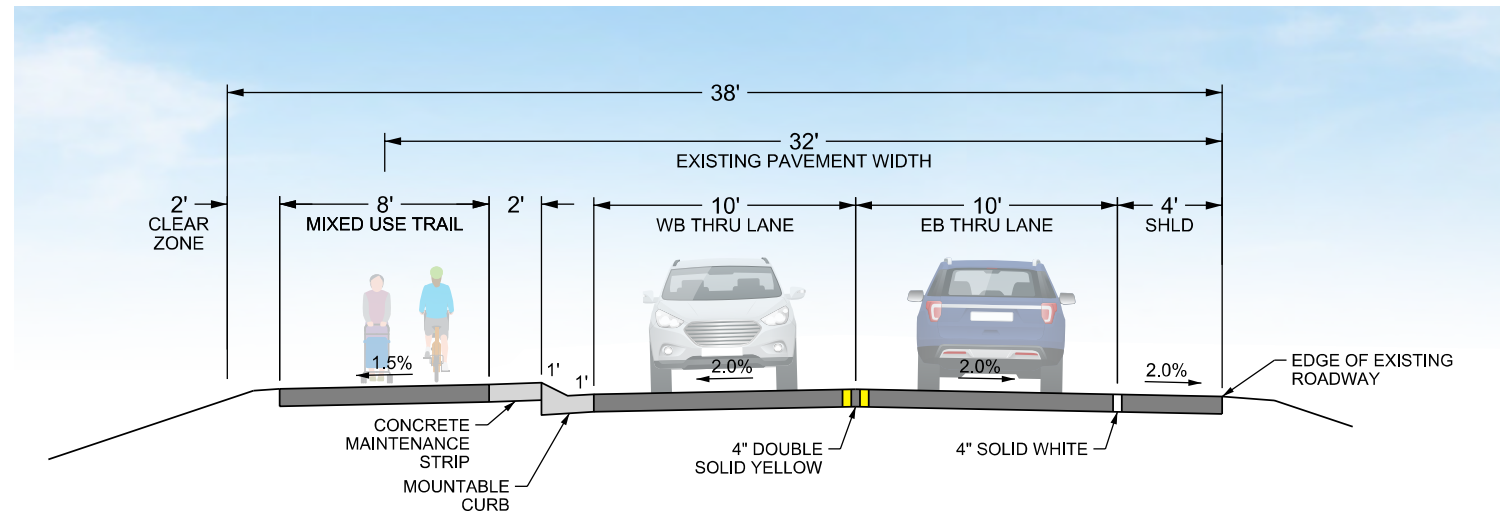


RAMSEY
COUNTY

ONE-WAY OPTION



TWO-WAY OPTION



A hybrid option is being considered which includes a two-way roadway with trail from White Bear Avenue to McKnight Road and a one-way roadway with trail from McKnight Road to County Road F.

CONCEPT EXAMPLES



Lake Avenue at Marina Triangle, White Bear Lake

- Two-way roadway with bituminous trail separated by patterned concrete maintenance strip.



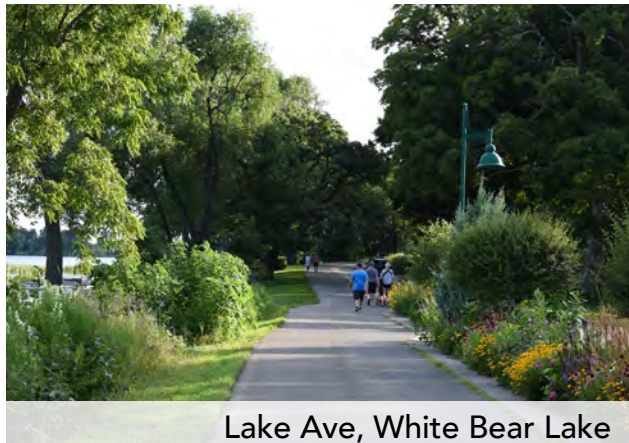
Highway 61, White Bear Lake

- Two-way roadway with concrete trail separated by colored concrete maintenance strip.



Mississippi River Boulevard, Saint Paul

- Two-way roadway with trail separated by variable-width boulevard with turf and trees.



Lake Ave, White Bear Lake

- One-way roadway with trail separated by wide boulevard with lighting and plantings.



Lake Ave, White Bear Lake

- One-way roadway with trail separated by wide paved boulevard.