



Ramsey County Sheriff's Office

Neighborhood Watch

Bob Fletcher, Sheriff

Public Safety Services Division – Crime Prevention Unit

1411 Paul Kirkwold Drive • Arden Hills, Minnesota 55112

Phone: 651-266-7339 • Fax: 651-266-7337

www.RamseyCountySheriff.us



Block Captain News – November 2022

Next Meeting Tuesday, January 31, 2013 – 6:30 pm

Ramsey County Public Works Building - Marsden Room
1425 Paul Kirkwold Drive, Arden Hills MN 55112
Near intersection of Highway 96 and Hamline

In this issue:

- Winter Driving links
- Tis the season for scams
- Winter considerations
- Holiday safety reminders
- Calls for Service website

DST to CST – clocks turn back Sunday, November 6

When the clocks turn back on Sunday, November 6, at 2:00 a.m. our evenings will be darker much earlier. With the early onset of nightfall please adjust and keep an eye out for pedestrians, especially those in dark clothing. Children and adults are reminded to put electronic devices down, keep heads up and walk, don't run, across the street. Cross the street at corners, using traffic signals and crosswalks whenever possible. Choose the safest routes to walk. Stay on the sidewalks or paths. If there is no sidewalk, walk on the left side of the road. Walk single file facing the traffic.

It's also time to review your city regulations on seasonal parking and snow removal policies. Most of our local communities have ticketing and towing after snowfalls (ranging from 1" to 2"), and many have restrictions on overnight parking.

Winter driving time is soon upon us

The season for snow, cold, bad roads, and thieves driving off in vehicles left running unattended with the keys in the ignition is soon upon us.

Great information on winter driving safety can be found at:

- <https://dps.mn.gov/divisions/hsem/weather-awareness-preparedness/Pages/winter-driving.aspx>
- <https://www.nhtsa.gov/winter-driving-tips>
- <https://dps.mn.gov/divisions/hsem/weather-awareness-preparedness/Documents/WinterSurvivalInYourCar.pdf>
- <https://exchange.aaa.com/safety/driving-advice/winter-driving-tips/>



Scams – always in season!

Scammers and thieves follow the headlines and the seasons in their efforts to seek advantage in their attempts to steal money from people. Here's a few to be aware of happening now and as we approach the holidays.

Student loan debt relief.

The Department of Education (ED)'s application for federal student loan debt relief is now open and, of course, scammers are on the move — trying to get your money and personal information.

Apply at StudentAid.gov/DebtRelief. Nowhere else. Right now, application is online only and in English and Spanish. A paper application will be available later.

Don't pay to apply. It's FREE. Anyone who says you need to pay is a scammer. And anyone who guarantees approval or quicker forgiveness: scam, scam, scam.



Applying for student loan debt relief?

Go to StudentAid.gov/DebtRelief.
Nowhere else.

FEDERAL TRADE COMMISSION

Report scams: ReportFraud.ftc.gov

Charity Scams

- Avoid donating to scammers
- Research the charity online
- Pay by credit card

ftc.gov/charity

#ScamFreeHoliday

FEDERAL TRADE COMMISSION

Charity scams

For many, holiday giving includes supporting charitable causes. Charities in need of support will be making year-end appeals by phone, mail, email, and social media. Scammers know that, too, and every year try to trick people into giving to them, not the real deal.

Check out the charity before you donate. Search online with the name of the charity plus words like “complaint,” “review,” or “scam.” Ask how much of your donation will go to the work of the charity (versus, say, fundraising).

Learn more by seeing what organizations like the BBB Wise Giving Alliance, Charity Navigator, CharityWatch and Candid say about how a charity does its business and spends its money.

Double-check the name. Scammers sometimes use names that sound like real charities that you know and trust.

Gift cards are for gifts.

If anyone tells you to **pay** with a gift card, it's a scam.

ReportFraud.ftc.gov

FEDERAL TRADE COMMISSION

Donating on "Giving Tuesday"?

1. Do some research
2. Ask questions
3. Find out who's behind a request on social media

Learn more at ftc.gov/charity

FEDERAL TRADE COMMISSION

Don't be rushed. Scammers love to pressure you to make fast decisions and pay them. But take it slow. Real charities will be happy to get your donation when you are ready.

Avoid donations by cash, gift card, cryptocurrency, or money transfer service — if they demand to be paid that way. That's how scammers ask to be paid. Your safer bet is to pay by credit card.

Winter – prepare and be aware

With the longer run of warmer weather this year the reality of preparing for winter may have been easy to set aside. The time is now to check those filters, chimneys, heating systems, pilot lights, storm windows, and the other details before the subzero temps put our systems to the test.

A great source of information on how to prepare your household for the challenges of weather is [Ready.gov](https://www.ready.gov), an official website of the U.S. Department of Homeland Security. Check it out when you have some time to seriously think about the future and how you can get ready for it.

There are suggestions on building your “go bag” in the event of weather emergencies, power outages, major snow storms and the like.



Safety reminders for the Holiday Season.

Nothing can ruin the holiday spirit faster than becoming a victim of crime. Unfortunately, the holiday season is a time of opportunity for thieves to burglarize your home for cash, credit cards and gifts.

Prevent theft from your vehicle:

- Don't leave valuables in your vehicle.
- Always lock your car, and park in a well-lit and well-traveled area.
- When running errands, shopping, or traveling, make an extra stop before arriving at your destination to lock valuables in your trunk.
- If you must leave personal property in your vehicle, make sure it is out of view.
- Be aware in parking lots. Have your keys in hand when approaching your vehicle, ready to unlock the door.

Package theft prevention

- Ask a trustworthy neighbor to watch for and retrieve your package when it is delivered.
- Request “signature required” service from the delivery company.
- Place a storage container, such as a large Rubbermaid, on your stoop for packages to be placed in so they are not readily seen by people driving by.
- Place a note on front door asking delivery driver to leave packages on the back steps.
- Have packages delivered to your work or a business address if possible.
- Deposit outgoing mail in official USPS drop boxes.

Financial card and online shopping considerations:

- If you go to an automatic teller machine for cash, check for people around and make sure it is well-lit and in a safe location.
- Carry only the credit cards you need and avoid carrying large amounts of cash.
- Keep your personal information private and your password secure. Do not respond to requests to verify your password or credit card information unless you initiated the contact. Legitimate businesses will not contact you in this manner.

Home security and safety tips:

- Don't display wrapped boxes under a lighted tree in the front window for thieves to see as they drive past your home.
- Don't pile up-empty gift boxes from your new computers, televisions, game systems and other electronics in front of your home on garbage day. Thieves will appreciate knowing that you have expensive gifts inside your home for them to steal. Instead, break down boxes and conceal the advertising when setting them out for recycling.
- Do NOT post your activities (gifts or plans to be away from home) on social media pages.
- Turn on outside lights to deter burglars.

CommunityCrimeMap.com – information of activity in your area

LexisNexis® Community Crime Map helps the public get a better idea of the calls for service activity in their area so they can make more informed decisions about how to stay safe.

LexisNexis's public crime map connects law enforcement with the community to reduce crime and improve public safety. Crime mapping helps the public get a better idea of the crime activity in their area so they can make more informed decisions about how to stay safe.

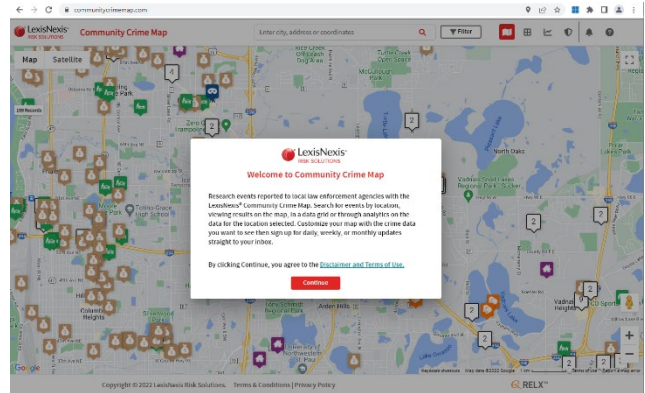
This tool has mapping, and analysis interface displays of four views of calls for service data. A simple tabbed interface allows the public to switch between a Map, Data Grid, Analytics and Metadata view of law enforcement data.

The Map displays data in Google Maps' well known, intuitive mapping interface. Call type, street-level address, location type and date and time are displayed for the public. Filtering capabilities include address search, distance buffer, call types, and date constraints.

In "Data Grid" view users can turn on and off columns and sort data based on any variable. Data in the grid automatically updates based on the incidents displayed on the map.

Analytics has meaningful, visually stunning graphs help users visualize crime trends in their area. Graphs automatically update based on the data that is displayed on the map giving user's full control over what data they would like to analyze. Metadata provides detail on the source of the data.

If you are curious about what is happening in your neighborhood (or others) go to <https://communitycrimemap.com> and enter your address and begin exploring.

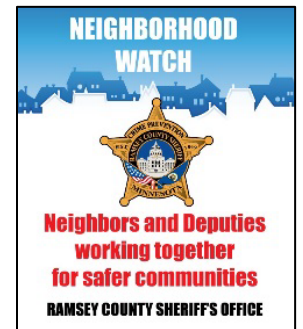


Neighborhood Watch is about Neighbors and Deputies working together

Involved neighbors are more likely to have open communication lines with each other, deputies, and the whole community. When neighbors know each other's names, normal patterns, and look out for each other, it is likely that they will report any activity that doesn't fit with regular schedules. Involved neighbors look out for each other.

Information sharing on crime prevention, crime trends, and law enforcement issues is a key element to the Neighborhood Watch program of the Sheriff's Office.

Neighborhood Watch program [information and forms](#) to help your block organization are available on the county [website](#). **Please complete and return the [Block Captain registration form](#)** to ensure the Sheriff's Office has your most current contact information. THANKS!



Mark your calendars for 2023 events:

Tuesday, January 31 – 6:30pm – Captains Meeting, 1425 Paul Kirkwold Drive, Arden Hills

Tuesday, August 1 –between 5pm to 9pm dependent upon neighborhood – **Night to Unite**

Thank you for working for safer neighborhoods!



[@RamseyCountySheriff](#)



[@RamseySheriff](#)



[@RamseySheriffMN](#)

Deputy Alicia Ouellette
Crime Prevention Specialist
651-266-7339

Randy Gustafson
Crime Prevention Coordinator
651-266-7315

email address: CrimePrevention@co.ramsey.mn.us

website: www.RamseyCountySheriff.us

Remember – when you See Something, Say Something, Call 9-1-1