

# Rice Creek North Regional Trail Long Range Plan Amendment 2018

Proposed In Park Bridge, Typical

Improve Existing Portage and Kayak & Canoe Launch  
 Extend Regional Trail in North Section to Create a Loop

**LEGEND**

Rice Creek Regional Trail	Proposed Multi-Use Trail	Enhanced Road Crossings
Proposed Rice Creek Regional Trail	Environmental Cleanup Area	Existing Restrooms
Regional Trails	Existing Canoe & Kayak Launch	Osprey & Kestrel Poles
Cross Country Ski Trail	Development Node	Municipal Paths
Proposed Cross Country Ski Trails		
Proposed In Park Bridge		
Parking		
Proposed Mountain Bike/Hiking Trails		
Rice Creek Water Trail		
In-Park Multi Use Trails		

Add Nature Interpretation Signs Along Trail, Typical

Additional Access Points

Municipal Path Aids in the Creation of a Loop

County RD I Lot

- Improve Portage and Kayak/Canoe Launch
- Implement Restrooms
- Improved Wayfinding Signs
- Develop Improved Stormwater Management Practices
- Drinking Fountains

New Portage and Kayak/Canoe Launch, Improve Wayfinding Signage

- Recreation Equipment Rental

Outdoor Recreation Area

- Picnic Tables
- Pavilions
- Fire Pit
- Public Art
- Creek Access

Development Node

- Boardwalks, Bridges, & Paths to Connect Site
- Creek Access
- Recreation Equipment Rental

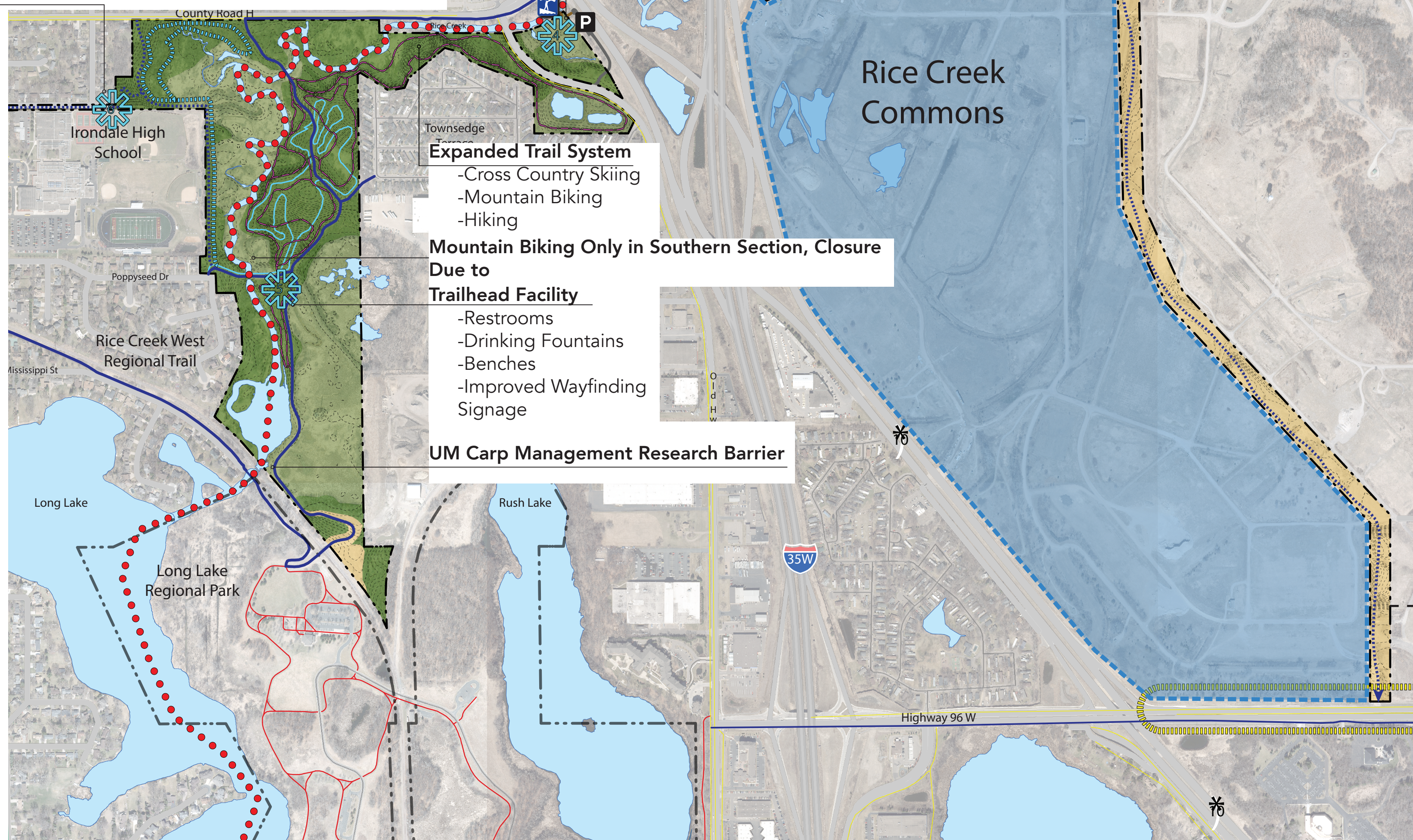
Archaeological Sensitive Area

County RD H Parking Lot

- Improve Portage Trail
- Improve Canoe & Kayak Launch
- Increase Parking
- Install Drinking Fountains
- Restrooms
- Establish Stormwater Control Best Practices
- Fishing Node

Irondale High School Trail Access

- Limited Parking
- Regional Trail Access Point



**Expanded Trail System**  
 -Cross Country Skiing  
 -Mountain Biking  
 -Hiking

**Mountain Biking Only in Southern Section, Closure Due to Trailhead Facility**

- Restrooms
- Drinking Fountains
- Benches
- Improved Wayfinding Signage

**UM Carp Management Research Barrier**

Enhanced Crossings at Major Roadways, Typical

Proposed Trailhead Entry Drive & Access Route

Cross Country Skiing Staging Area

- Long Term Lighting & Snowmaking to be Determined in the Central Section

Proposed Multi-Season Trailhead Facility

- Final Size and Used To Be Determined
- Nature Center
- Nature Interpretation
- Recreation Equipment Rental
- Restrooms
- Satellite Maintenance Area (Final Location To Be Determined)
- Civic and Recreational Programming Areas
- Stormwater Management Solutions
- Indoor Recreation, Type of Use To be Determined

Environmental Cleanup Area C, Limited Native Prairie & Wetland Restoration

10-12 Foot Wide Paved Multi-Use Trail

- Coordinated Connections With Rice Creek Commons TBD
- Native Plantings Throughout Corridor

Restored Prairie

**Rice Creek North Trail Corridor Trail Lengths**

**North Segment Trails**

- Approximately 4.6 Miles/7.32 Km of Paved Trail
- Approximately 5.46 Miles/8.79 Km of Mountain/Fat Bike Trails
- Approximately 5.01 Miles/8.06 Km of Cross Country Ski Trails

**Central Segment Trails**

- Approximately 4.07 Miles/6.56 Km of Paved Trail
- Approximately 4.46 Miles/7.18 Km of Mountain/Fat Bike Trails
- Approximately 4.97 Miles/7.99 Km of Cross Country Ski Trails

**South Segment Trails**

- Approximately 1.85 Miles/2.97 Km of Paved Trail
- Approximately 2.87 Miles/4.62 Km of Mountain/Fat Bike Trails
- Approximately 2.05 Miles/3.29 Km of Cross Country Ski Trails

**Total Rice Creek Trail Corridor Trails**

- Approximately 12.09 Miles/19.46 Km of Paved Trail
- Approximately 12.8 Miles/20.59 Km of Mountain/Fat Bike Trails
- Approximately 12.02 Miles/19.35 Km of Cross Country Ski Trails

