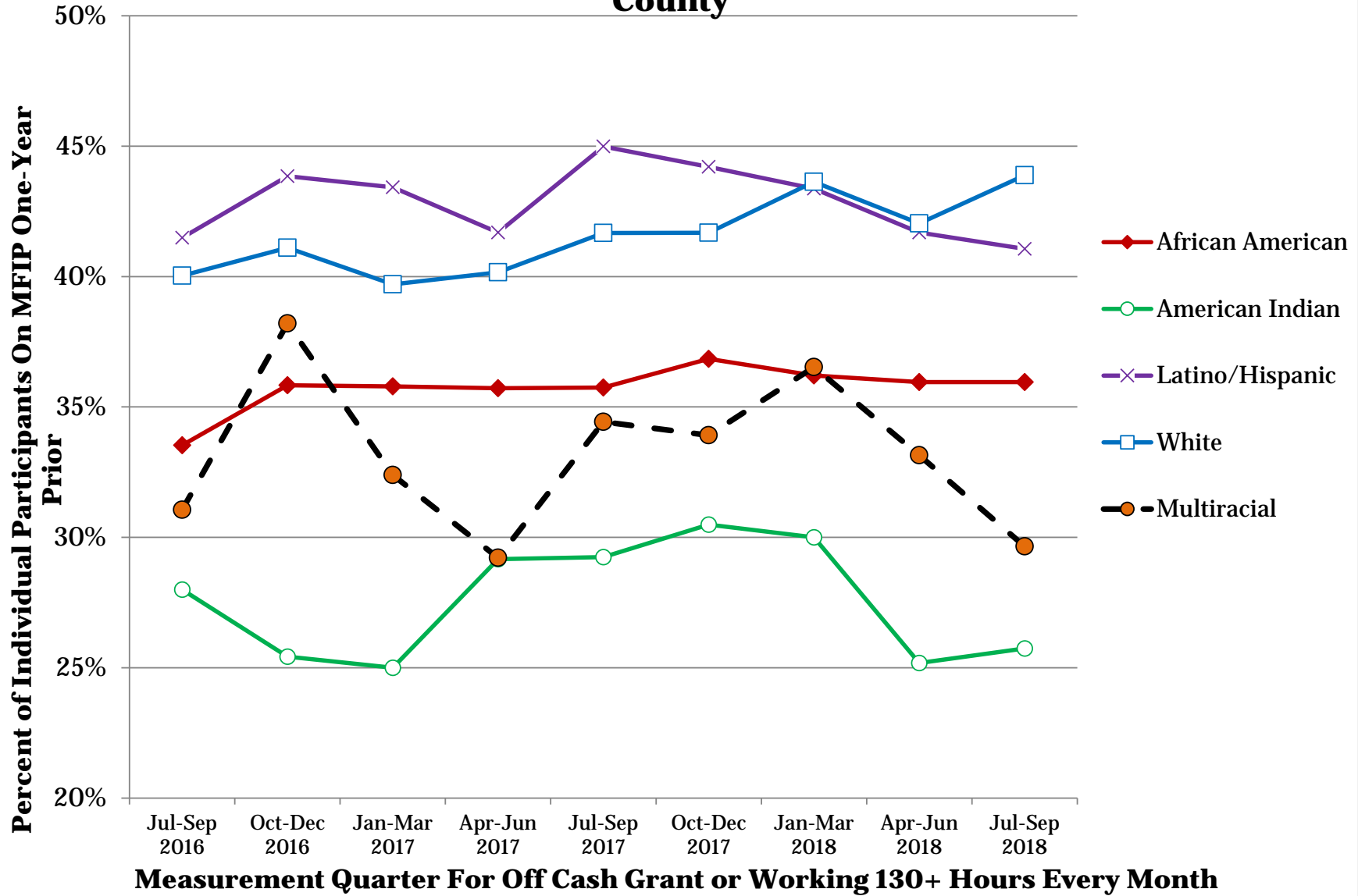


One-Year Self-Support Index by Race and Ethnicity, Ramsey County

Race/Ethnicity	Jul-Sep	Oct-Dec	Jan-Mar	Apr-Jun	Jul-Sep	Oct-Dec	Jan-Mar	Apr-Jun	Jul-Sep	Persons in Index for Last Quarter
	2016	2016	2017	2017	2017	2017	2018	2018	2018	
County Total	44.4%	45.8%	46.2%	46.8%	47.4%	47.7%	47.8%	46.8%	47.1%	5,880
African American	33.5%	35.8%	35.8%	35.7%	35.7%	36.8%	36.2%	36.0%	36.0%	2,264
American Indian	28.0%	25.4%	25.0%	29.2%	29.2%	30.5%	30.0%	25.2%	25.7%	136
Asian American	53.6%	56.6%	61.6%	58.1%	56.3%	57.9%	56.3%	58.7%	62.2%	209
Hmong	46.1%	46.9%	49.8%	50.7%	49.3%	41.3%	41.8%	43.3%	50.9%	216
Latino/Hispanic	41.5%	43.8%	43.4%	41.7%	45.0%	44.2%	43.4%	41.7%	41.1%	358
Multiracial	31.1%	38.2%	32.4%	29.2%	34.4%	33.9%	36.5%	33.1%	29.7%	172
Other Asian Immigrant	72.5%	72.4%	72.3%	77.1%	77.1%	77.2%	75.9%	73.4%	73.1%	562
Other Black Immigrant	58.3%	55.8%	59.1%	63.1%	61.0%	61.2%	67.0%	65.1%	61.8%	259
Somali	62.0%	62.3%	66.1%	66.2%	67.0%	68.6%	68.1%	69.9%	68.6%	628
White	40.0%	41.1%	39.7%	40.2%	41.7%	41.7%	43.6%	42.0%	43.9%	1,046
Disparity with Whites										
African American	-6.5%	-5.3%	-3.9%	-4.4%	-5.9%	-4.8%	-7.4%	-6.1%	-7.9%	-6.6%
American Indian	-12.0%	-15.7%	-14.7%	-11.0%	-12.4%	-11.2%	-13.6%	-16.9%	-18.1%	-15.0%
Asian American	13.6%	15.5%	21.9%	18.0%	14.7%	16.3%	12.6%	16.7%	18.3%	16.0%
Hmong	6.1%	5.8%	10.1%	10.6%	7.6%	-0.4%	-1.8%	1.3%	7.0%	1.5%
Latino/Hispanic	1.5%	2.7%	3.7%	1.5%	3.3%	2.5%	-0.3%	-0.3%	-2.8%	-0.2%
Multiracial	-9.0%	-2.9%	-7.3%	-11.0%	-7.2%	-7.8%	-7.1%	-8.9%	-14.2%	-9.5%
Other Asian Immigrant	32.5%	31.3%	32.6%	36.9%	35.5%	35.5%	32.3%	31.4%	29.3%	32.1%
Other Black Immigrant	18.3%	14.6%	19.4%	23.0%	19.4%	19.5%	23.4%	23.1%	17.9%	21.0%
Somali	21.9%	21.2%	26.4%	26.0%	25.3%	26.9%	24.5%	27.8%	24.7%	26.0%
White	0.0%	0.0%	0.0%	0.0%	0.0%	0.0%	0.0%	0.0%	0.0%	0.0%

One-Year Self-Support Index by Race and Ethnicity, Ramsey County



Prepared by Ramsey County Health and Wellnes Admin, Research And Evaluation, 4/2/2019

Three-Year Self-Support Index by Race and Ethnicity, Ramsey County

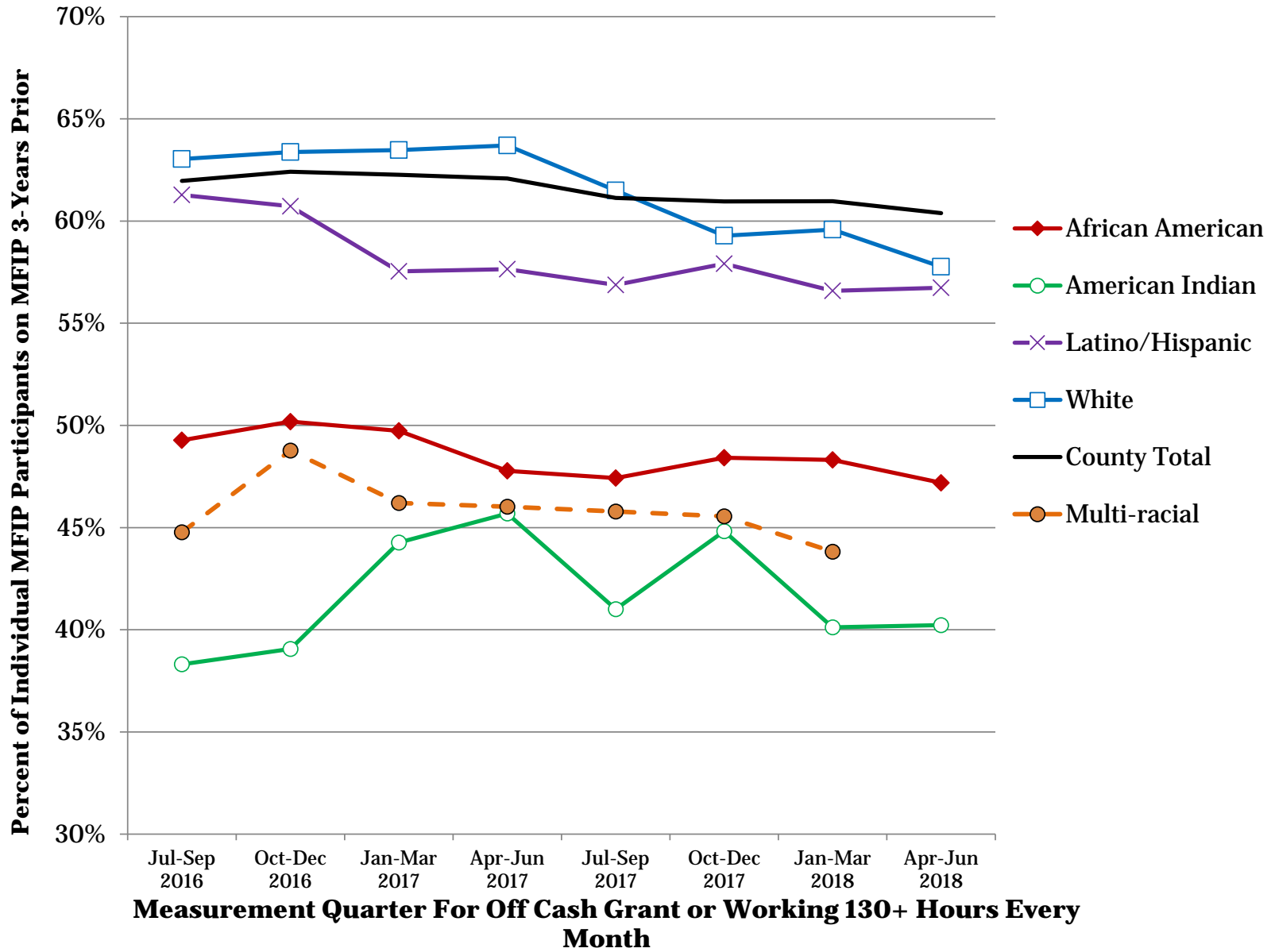
Race/Ethnicity	2016		2017		2017		2018		Persons in Index for Last Quarter	
	Jul-Sep	Oct-Dec	Jan-Mar	Apr-Jun	Jul-Sep	Oct-Dec	Jan-Mar	Apr-Jun		
County Total	62.0%	62.4%	62.3%	62.1%	61.1%	61.0%	61.0%	60.4%	60.7%	3,759
African American	49.3%	50.2%	49.7%	47.8%	47.4%	48.4%	48.3%	47.2%	47.1%	1,103
American Indian	38.3%	39.1%	44.3%	45.7%	41.0%	44.8%	40.1%	40.2%	37.0%	64
Asian American	79.9%	79.7%	76.7%	77.1%	74.4%	75.5%	76.3%	76.8%	77.5%	179
Hmong	70.0%	68.7%	69.5%	72.8%	68.5%	67.7%	66.2%	62.4%	62.6%	166
Latino/Hispanic	61.3%	60.7%	57.5%	57.6%	56.9%	57.9%	56.6%	56.7%	57.6%	217
Multi-racial	44.8%	48.8%	46.2%	46.0%	45.8%	45.6%	43.8%	42.2%	40.7%	74
Other Asian immigrant	89.6%	88.5%	88.7%	90.0%	89.7%	89.7%	89.7%	89.4%	91.5%	687
Other Black Immigrant	75.7%	76.4%	78.8%	78.3%	80.7%	82.4%	82.0%	84.1%	80.9%	178
Somali	76.9%	76.6%	78.4%	76.5%	75.3%	75.2%	78.1%	82.5%	81.0%	459
White	63.0%	63.4%	63.5%	63.7%	61.5%	59.3%	59.6%	57.8%	58.3%	627

DHS Results	Apr-16- Mar-17	Difference from Actual	Apr-17- Mar-18	Difference from Actual
Annualized range of Expected Performance	62.9%	-0.8 Upper	62.4%	-1.1 Upper
DHS Weighted Results	59.8%	2.3 Lower	59.7%	1.6 Lower
	62.1%		61.3%	

Expected and actual annual performance ranges are from DHS Management Indicators Report.

Difference with Whites	Avg Difference Last 4 Quarters									
African American	-13.8%	-13.2%	-13.7%	-15.9%	-14.1%	-10.9%	-11.3%	-10.6%	-11.1%	-11.0%
American Indian	-24.7%	-24.3%	-19.2%	-18.0%	-20.5%	-14.4%	-19.5%	-17.5%	-21.3%	-18.2%
Asian American	16.8%	16.3%	13.2%	13.4%	12.9%	16.2%	16.8%	19.1%	19.2%	17.8%
Hmong	7.0%	5.4%	6.0%	9.1%	7.1%	8.4%	6.7%	4.6%	4.4%	6.0%
Latino/Hispanic	-1.8%	-2.6%	-5.9%	-6.1%	-4.6%	-1.4%	-3.0%	-1.0%	-0.7%	-1.5%
Multi-racial	-18.3%	-14.6%	-17.3%	-17.7%	-15.7%	-13.7%	-15.8%	-15.5%	-17.6%	-15.7%
Other Asian immigrant	26.6%	25.1%	25.2%	26.4%	28.2%	30.4%	30.1%	31.7%	33.2%	31.4%
Other Black Immigrant	12.7%	13.0%	15.3%	14.6%	19.2%	23.1%	22.4%	26.3%	22.6%	23.6%
Somali	13.9%	13.3%	14.9%	12.8%	13.8%	15.9%	18.5%	24.7%	22.7%	20.5%

Three-Year Self-Support Index, Ramsey County



Prepared by Ramsey County Health and Wellnes Admin, Research And Evaluation, 4/2/2019