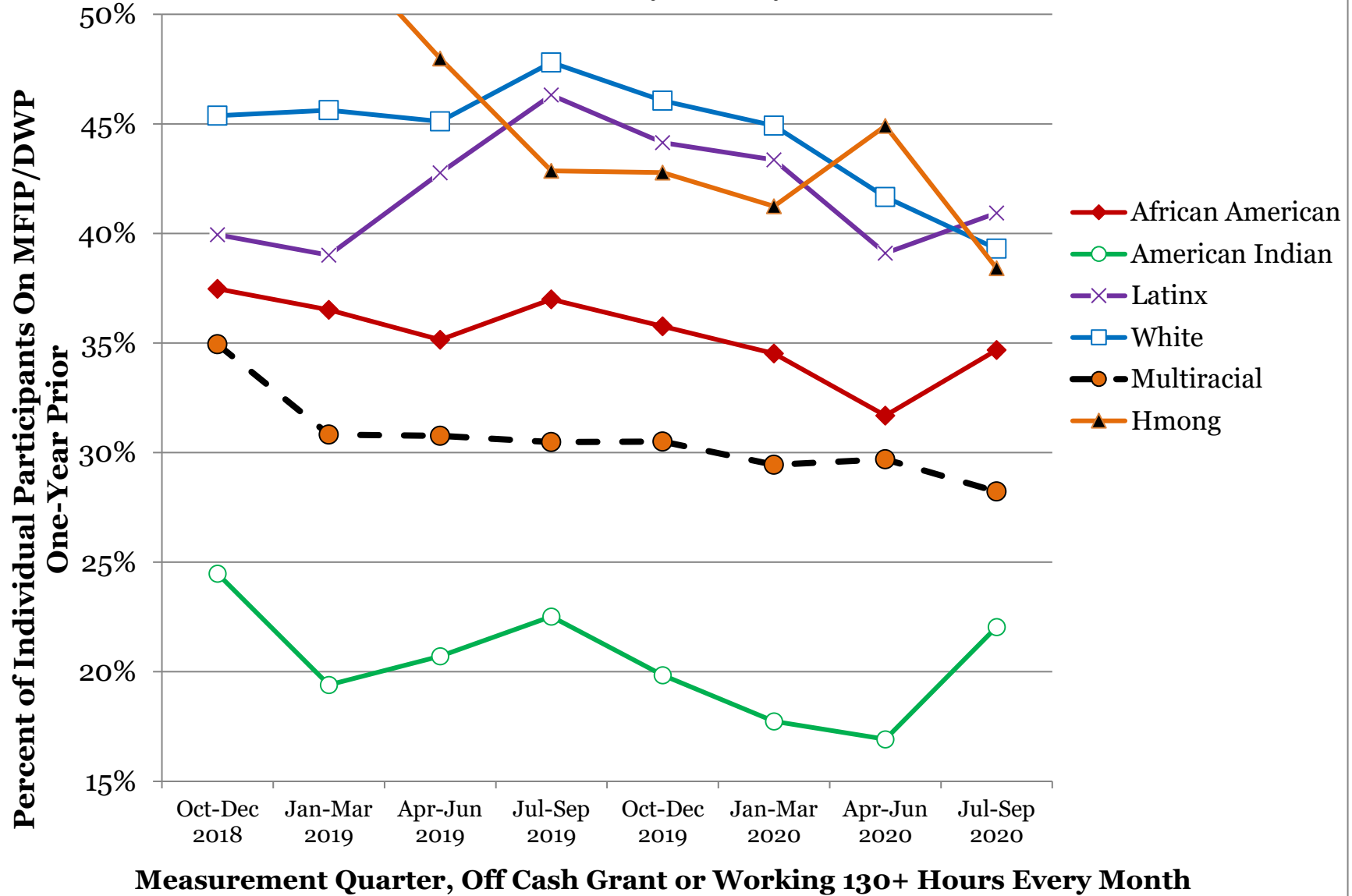


One-Year Self-Support Index by Race and Ethnicity, Ramsey County

Race/Ethnicity	Oct-Dec	Jan-Mar	Apr-Jun	Jul-Sep	Oct-Dec	Jan-Mar	Apr-Jun	Jul-Sep	Persons in Index for Last Quarter
	2018	2019	2019	2019	2019	2020	2020	2020	
County Total	47.9%	46.5%	46.1%	47.5%	46.7%	44.7%	42.0%	43.4%	4,819
African American	37.5%	36.5%	35.1%	37.0%	35.8%	34.5%	31.7%	34.7%	2,070
American Indian	24.5%	19.4%	20.7%	22.5%	19.8%	17.7%	16.9%	22.0%	127
Asian American	60.3%	64.4%	61.8%	63.0%	66.5%	67.4%	71.5%	69.1%	152
Hmong	54.3%	53.5%	48.0%	42.9%	42.8%	41.2%	44.9%	38.4%	151
Latinx	39.9%	39.0%	42.8%	46.3%	44.1%	43.4%	39.1%	40.9%	320
Multiracial	34.9%	30.8%	30.8%	30.5%	30.5%	29.4%	29.7%	28.2%	163
Other Asian Immigrant	66.5%	63.5%	65.5%	68.2%	70.8%	63.8%	60.6%	60.0%	375
Other Black Immigrant	69.4%	63.6%	61.3%	58.3%	59.1%	60.4%	60.3%	60.9%	238
Somali	73.6%	73.2%	75.4%	76.2%	76.7%	75.2%	69.8%	77.2%	391
White	45.4%	45.6%	45.1%	47.8%	46.1%	44.9%	41.7%	39.3%	799
Disparity with Whites									Avg Difference Last 4 Quarters
African American	-7.9%	-9.1%	-10.0%	-10.8%	-10.3%	-10.4%	-10.0%	-4.6%	-8.8%
American Indian	-20.9%	-26.2%	-24.4%	-25.3%	-26.2%	-27.2%	-24.7%	-17.3%	-23.8%
Asian American	14.9%	18.8%	16.7%	15.2%	20.4%	22.5%	29.9%	29.8%	25.6%
Hmong	8.9%	7.9%	2.9%	-4.9%	-3.3%	-3.7%	3.3%	-0.9%	-1.1%
Latinx	-5.4%	-6.6%	-2.3%	-1.5%	-1.9%	-1.6%	-2.6%	1.6%	-1.1%
Multiracial	-10.4%	-14.8%	-14.3%	-17.3%	-15.5%	-15.5%	-12.0%	-11.1%	-13.5%
Other Asian Immigrant	21.1%	17.9%	20.3%	20.4%	24.7%	18.9%	18.9%	20.7%	20.8%
Other Black Immigrant	24.0%	18.0%	16.2%	10.5%	13.0%	15.5%	18.6%	21.6%	17.2%
Somali	28.3%	27.5%	30.3%	28.4%	30.6%	30.3%	28.1%	37.9%	31.8%
White	0.0%	0.0%	0.0%	0.0%	0.0%	0.0%	0.0%	0.0%	0.0%

One-Year Self-Support Index by Race and Ethnicity, Ramsey County



Prepared by Ramsey County Health and Wellness Admin, Research And Evaluation