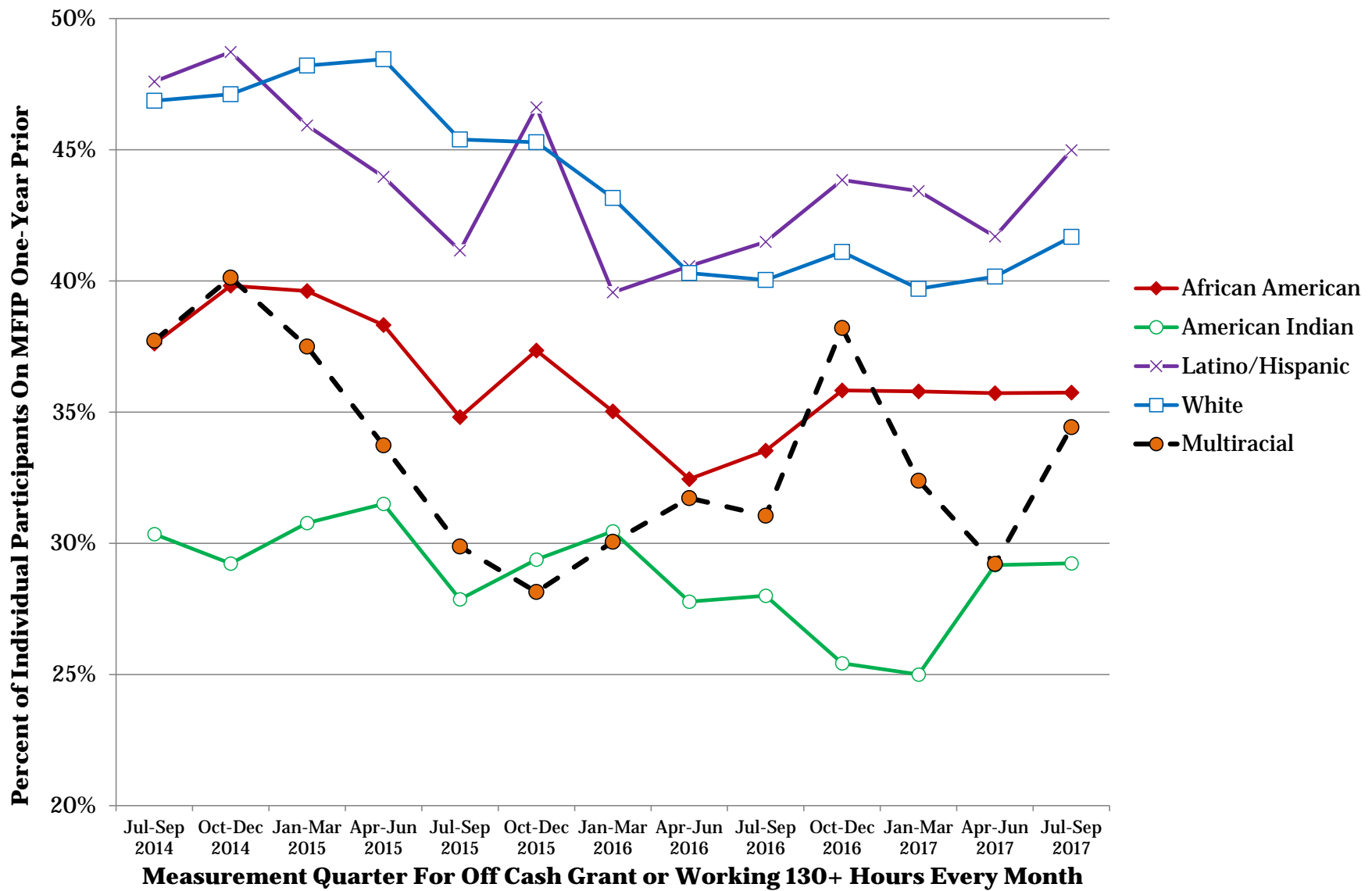


One-Year Self-Support Index by Race and Ethnicity, Ramsey County

Race/Ethnicity	Jul-Sep	Oct-Dec	Jan-Mar	Apr-Jun	Jul-Sep	Oct-Dec	Jan-Mar	Apr-Jun	Jul-Sep	Oct-Dec	Jan-Mar	Apr-Jun	Jul-Sep	Persons in Index for Last Quarter
	2014	2014	2015	2015	2015	2015	2016	2016	2016	2016	2017	2017	2017	
County Total	48.6%	50.0%	49.6%	49.3%	46.5%	46.9%	45.1%	43.3%	44.4%	45.8%	46.2%	46.8%	47.4%	6,446
African American	37.6%	39.8%	39.6%	38.3%	34.8%	37.3%	35.0%	32.4%	33.5%	35.8%	35.8%	35.7%	35.7%	2,423
American Indian	30.3%	29.2%	30.8%	31.5%	27.9%	29.4%	30.5%	27.8%	28.0%	25.4%	25.0%	29.2%	29.2%	171
Asian American	67.3%	64.9%	66.8%	60.0%	53.7%	54.9%	51.8%	46.1%	53.6%	56.6%	61.6%	58.1%	56.3%	245
Hmong	55.6%	56.4%	53.5%	58.8%	56.9%	50.0%	49.4%	45.7%	46.1%	46.9%	49.8%	50.7%	49.3%	276
Latino/Hispanic	47.6%	48.7%	45.9%	44.0%	41.2%	46.6%	39.6%	40.6%	41.5%	43.8%	43.4%	41.7%	45.0%	389
Multiracial	37.7%	40.1%	37.5%	33.7%	29.9%	28.1%	30.1%	31.7%	31.1%	38.2%	32.4%	29.2%	34.4%	183
Other Asian Immigrant	76.3%	77.3%	76.8%	76.2%	75.6%	73.2%	72.7%	73.2%	72.5%	72.4%	72.3%	77.1%	77.1%	770
Other Black Immigrant	58.0%	64.3%	62.9%	61.4%	57.9%	59.8%	56.7%	58.5%	58.3%	55.8%	59.1%	63.1%	61.0%	231
Somali	63.1%	64.5%	61.9%	63.3%	61.2%	59.3%	60.6%	60.3%	62.0%	62.3%	66.1%	66.2%	67.0%	600
White	46.9%	47.1%	48.2%	48.4%	45.4%	45.3%	43.2%	40.3%	40.0%	41.1%	39.7%	40.2%	41.7%	1,135
Disparity with Whites														
African American	-9.3%	-7.3%	-8.6%	-10.1%	-10.6%	-7.9%	-8.1%	-7.9%	-6.5%	-5.3%	-3.9%	-4.4%	-5.9%	-4.9%
American Indian	-16.5%	-17.9%	-17.4%	-16.9%	-17.5%	-15.9%	-12.7%	-12.5%	-12.0%	-15.7%	-14.7%	-11.0%	-12.4%	-13.5%
Asian American	20.4%	17.8%	18.6%	11.6%	8.3%	9.6%	8.7%	5.8%	13.6%	15.5%	21.9%	18.0%	14.7%	17.5%
Hmong	8.7%	9.3%	5.3%	10.4%	11.5%	4.7%	6.2%	5.4%	6.1%	5.8%	10.1%	10.6%	7.6%	8.5%
Latino/Hispanic	0.7%	1.6%	-2.3%	-4.5%	-4.2%	1.3%	-3.6%	0.3%	1.5%	2.7%	3.7%	1.5%	3.3%	2.8%
Multiracial	-9.1%	-7.0%	-10.7%	-14.7%	-15.5%	-17.1%	-13.1%	-8.6%	-9.0%	-2.9%	-7.3%	-11.0%	-7.2%	-7.1%
Other Asian Immigrant	29.4%	30.1%	28.6%	27.8%	30.2%	27.9%	29.6%	32.9%	32.5%	31.3%	32.6%	36.9%	35.5%	34.1%
Other Black Immigrant	11.2%	17.2%	14.7%	12.9%	12.5%	14.6%	13.6%	18.2%	18.3%	14.6%	19.4%	23.0%	19.4%	19.1%
Somali	16.2%	17.4%	13.7%	14.8%	15.8%	14.0%	17.5%	20.0%	21.9%	21.2%	26.4%	26.0%	25.3%	24.8%
White	0.0%	0.0%	0.0%	0.0%	0.0%	0.0%	0.0%	0.0%	0.0%	0.0%	0.0%	0.0%	0.0%	0.0%

One-Year Self-Support Index by Race and Ethnicity, Ramsey County



Prepared by Ramsey County Health and Wellnes Admin, Research And Evaluation, 1/22/2018

Three-Year Self-Support Index by Race and Ethnicity, Ramsey County

Race/Ethnicity	Jul-Sep	Oct-Dec	Jan-Mar	Apr-Jun	Jul-Sep	Oct-Dec	Jan-Mar	Apr-Jun	Jul-Sep	Oct-Dec	Jan-Mar	Apr-Jun	Jul-Sep	Persons in Index for Last Quarter
	2014	2014	2015	2015	2015	2015	2016	2016	2016	2016	2017	2017	2017	
County Total	64.4%	64.9%	65.0%	64.9%	64.2%	64.0%	62.7%	62.1%	62.0%	62.4%	62.3%	62.1%	61.1%	6,565
African American	49.4%	50.5%	50.9%	51.2%	51.1%	51.4%	49.7%	50.1%	49.3%	50.2%	49.7%	47.8%	47.4%	2,465
American Indian	43.4%	42.6%	45.7%	44.1%	39.6%	38.4%	40.4%	37.6%	38.3%	39.1%	44.3%	45.7%	41.0%	178
Asian American	85.4%	84.6%	87.9%	85.9%	85.3%	83.1%	84.2%	81.5%	79.9%	79.7%	76.7%	77.1%	74.4%	234
Hmong	76.5%	76.4%	75.5%	75.5%	75.4%	73.0%	73.2%	73.1%	70.0%	68.7%	69.5%	72.8%	68.5%	337
Latino/Hispanic	65.0%	68.0%	69.8%	68.3%	67.6%	65.5%	61.9%	62.3%	61.3%	60.7%	57.5%	57.6%	56.9%	371
Multi-racial	53.5%	56.6%	56.3%	52.9%	49.4%	50.0%	50.3%	47.0%	44.8%	48.8%	46.2%	46.0%	45.8%	166
Other Asian immigrant	88.5%	91.6%	88.5%	89.4%	89.1%	88.9%	86.5%	88.4%	89.6%	88.5%	88.7%	90.0%	89.7%	824
Other Black Immigrant	79.7%	81.1%	79.7%	81.4%	77.7%	76.4%	77.3%	75.1%	75.7%	76.4%	78.8%	78.3%	80.7%	249
Somali	72.8%	71.8%	73.8%	75.7%	76.8%	76.1%	75.0%	73.8%	76.9%	76.6%	78.4%	76.5%	75.3%	466
White	66.1%	65.2%	65.8%	66.2%	65.3%	65.6%	64.9%	63.4%	63.0%	63.4%	63.5%	63.7%	61.5%	1,262

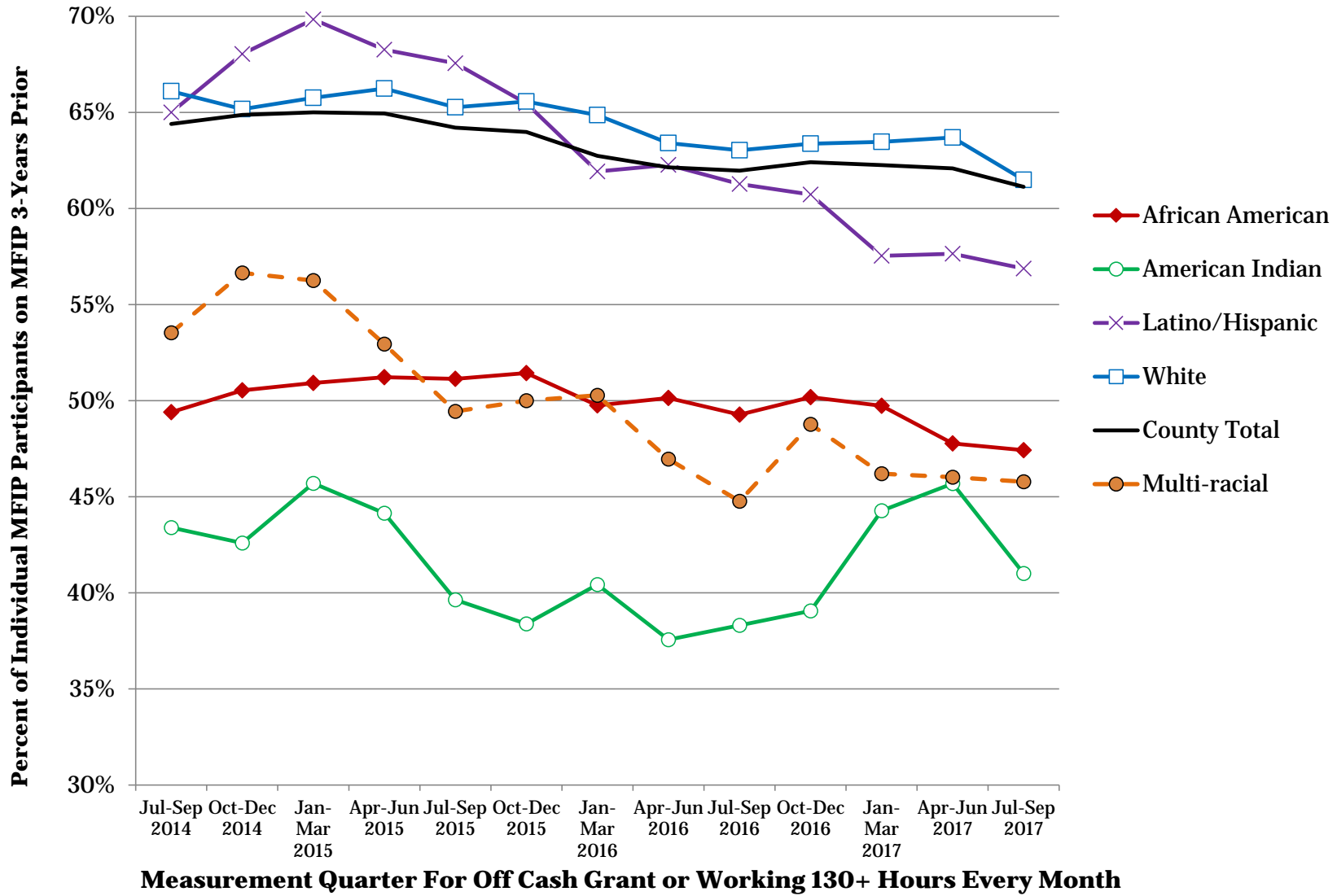
	Apr-Mar	Difference from		Apr-15-	Difference from		Apr-16-	Difference from
DHS Results	14-15	Actual		Mar-16	Actual		Mar-17	Actual
Annualized range of	63.8%	0.6 Upper		63.4%	0.5 Upper		62.9%	-0.8 Upper
Expected Performance	61.6%	2.8 Lower		60.1%	3.8 Lower		59.8%	2.3 Lower
DHS Weighted	64.4%			63.9%			62.1%	

Expected and actual annual performance ranges are from DHS Management Indicators Report.

														Avg Difference Last 4 Quarters
Difference with Whites														
African American	-16.7%	-14.6%	-14.8%	-15.0%	-14.1%	-14.1%	-15.1%	-13.3%	-13.8%	-13.2%	-13.7%	-15.9%	-14.1%	-14.2%
American Indian	-22.7%	-22.6%	-20.1%	-22.1%	-25.6%	-27.2%	-24.4%	-25.8%	-24.7%	-24.3%	-19.2%	-18.0%	-20.5%	-20.5%
Asian American	19.3%	19.4%	22.2%	19.7%	20.1%	17.5%	19.3%	18.1%	16.8%	16.3%	13.2%	13.4%	12.9%	14.0%
Hmong	10.4%	11.2%	9.8%	9.3%	10.1%	7.5%	8.4%	9.7%	7.0%	5.4%	6.0%	9.1%	7.1%	6.9%
Latino/Hispanic	-1.1%	2.9%	4.1%	2.0%	2.3%	-0.1%	-2.9%	-1.1%	-1.8%	-2.6%	-5.9%	-6.1%	-4.6%	-4.8%
Multi-racial	-12.6%	-8.5%	-9.5%	-13.3%	-15.8%	-15.6%	-14.6%	-16.4%	-18.3%	-14.6%	-17.3%	-17.7%	-15.7%	-16.3%
Other Asian immigrant	22.4%	26.4%	22.8%	23.1%	23.8%	23.4%	21.7%	25.0%	26.6%	25.1%	25.2%	26.4%	28.2%	26.2%
Other Black Immigrant	13.6%	15.9%	14.0%	15.1%	12.4%	10.9%	12.4%	11.7%	12.7%	13.0%	15.3%	14.6%	19.2%	15.5%
Somali	6.7%	6.7%	8.0%	9.4%	11.6%	10.5%	10.1%	10.4%	13.9%	13.3%	14.9%	12.8%	13.8%	13.7%

*Note: In July 2015 state law instituted the housing grant of \$110 to most MFIP cases.

Three-Year Self-Support Index, Ramsey County



Prepared by Ramsey County Health and Wellnes Admin, Research And Evaluation, 1/22/2018