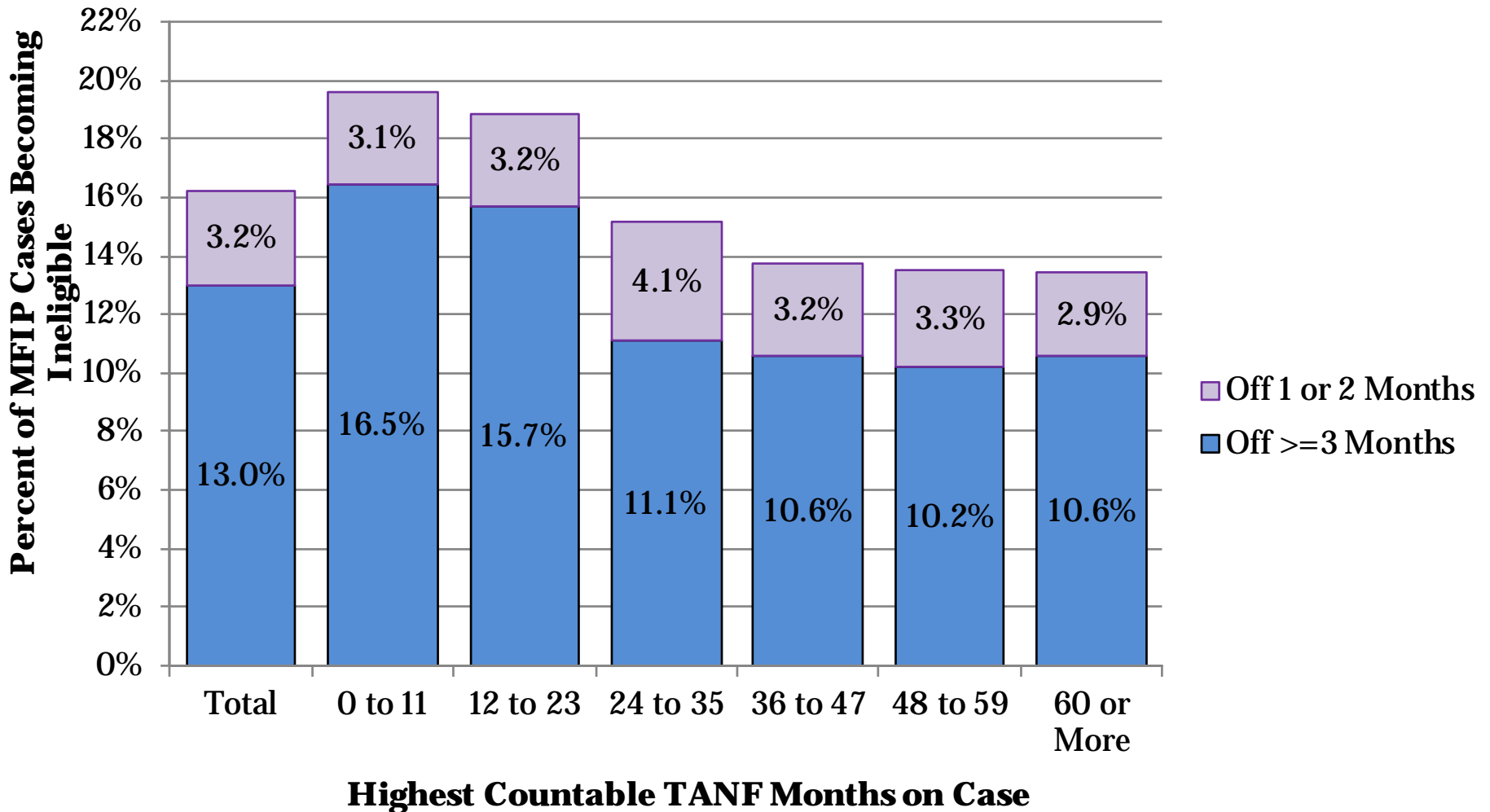


MFIP-Employment Services  
**County-Wide Indicators,**  
**April-June 2016**

Published November 9, 2016

Compiled by Community Human Services Administration, Office of Research & Evaluation

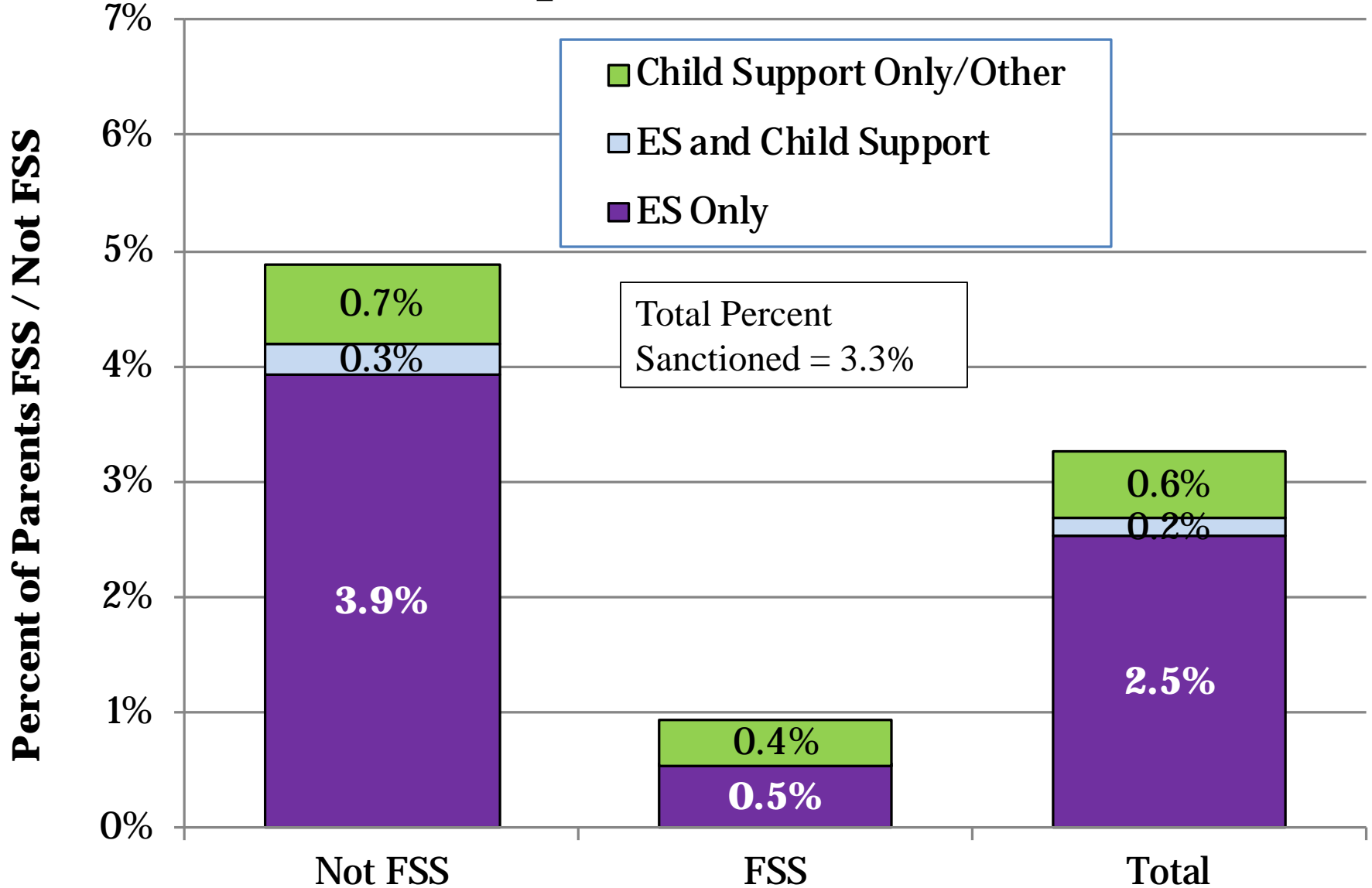
# 18. Cases Leaving MFIP\* Over Apr-Jun 2016, Ineligible on MAXIS in Following Months



\*Note: All parents ineligible for both MFIP cash and MFIP food portion anywhere in Minnesota

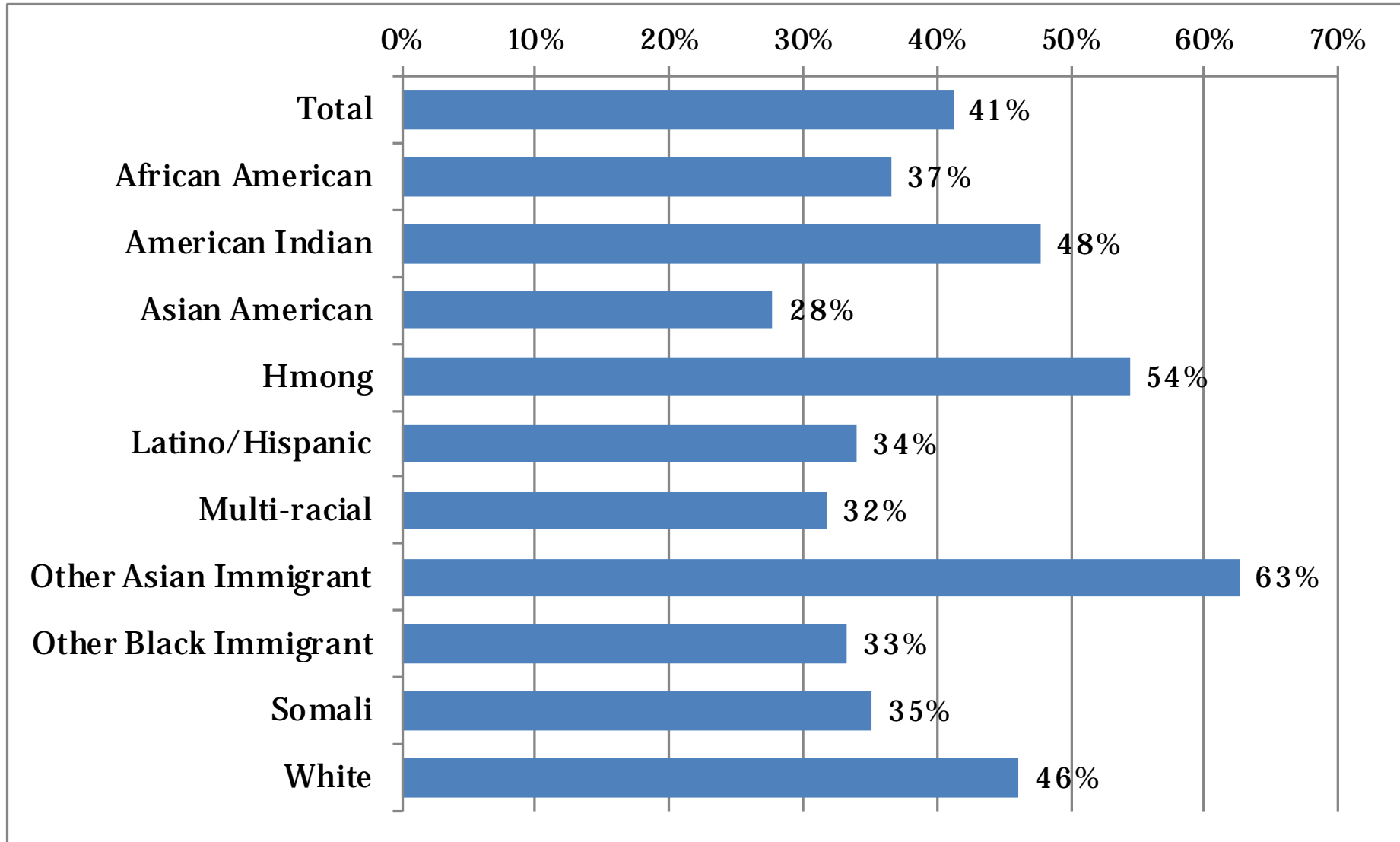
Total cases eligible in any month of quarter = 4,974

# 19. MFIP Parents, Sanction Rates Per Month Apr-Jun 2016



Average MFIP Parents Eligible per month on MAXIS:  
 Not FSS = 2,948      FSS = 2,071

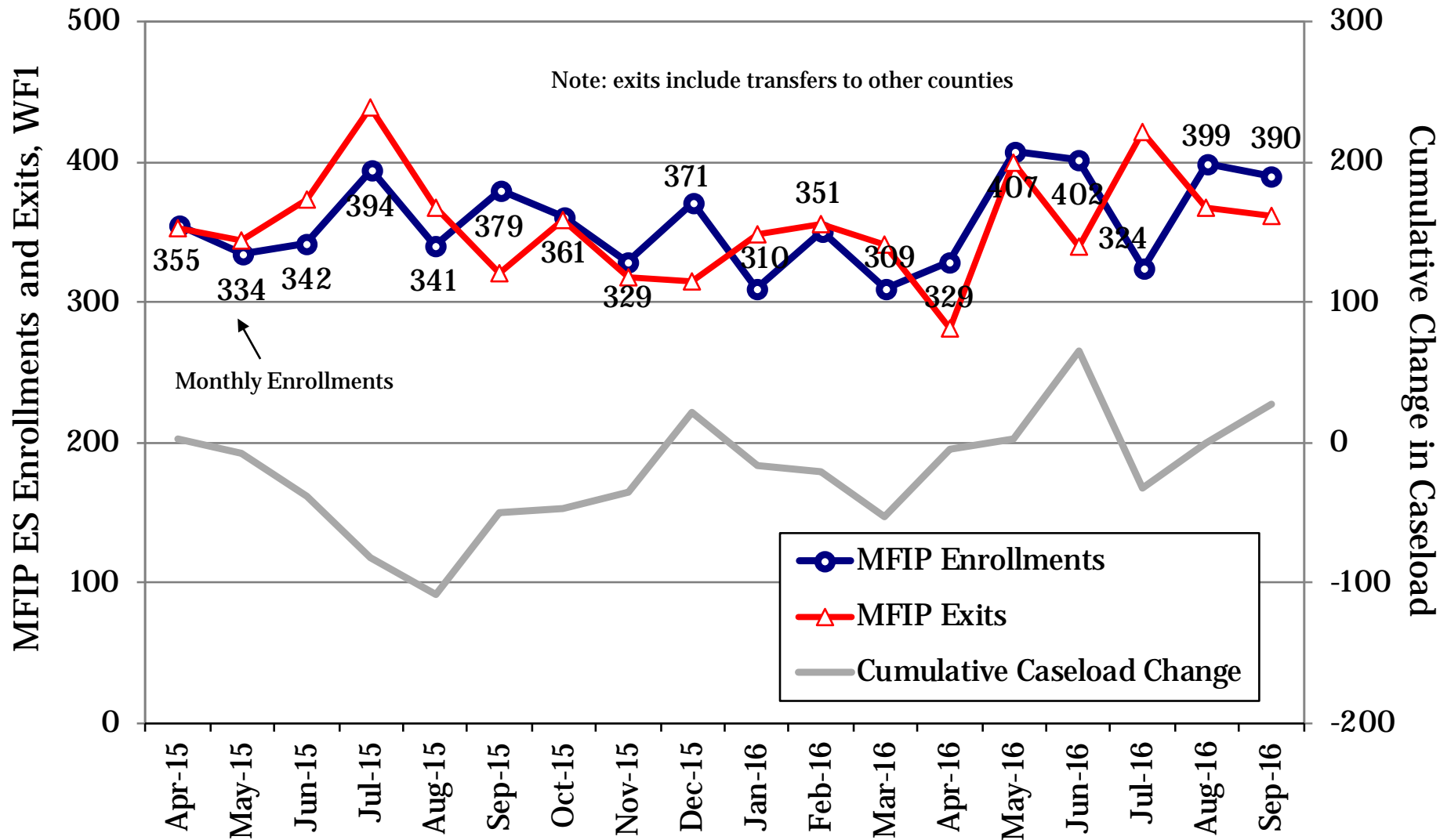
# 20. Family Stabilization Services, Percent of Total Parents on MFIP Apr-Jun 2016



Average FSS persons per month on MAXIS = 2,071

Average total persons per month on MAXIS = 5,019

# 21. MFIP Employment Services Enrollments and Exits, Prior 18 Months

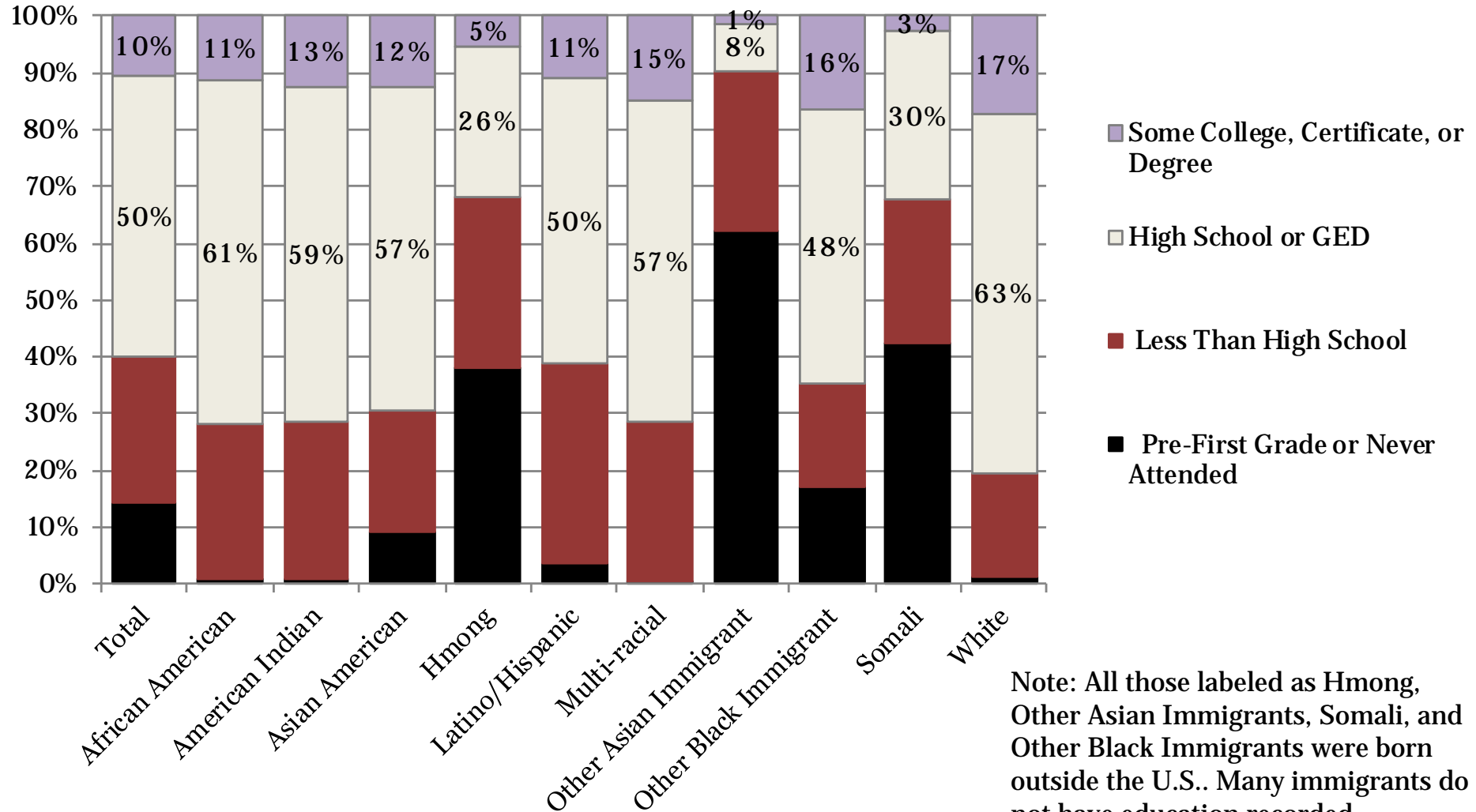


Total MFIP-ES Enrollments = 6,427  
 Total MFIP-ES Exits = 6,401

Net Change = +27

Open on WF1 at Start = 5,281  
 Open on WF1 at End = 5,308

# 22. Highest Educational Attainment from WF1 or MAXIS, MFIP Parents Apr-Jun 2016



Note: All those labeled as Hmong, Other Asian Immigrants, Somali, and Other Black Immigrants were born outside the U.S.. Many immigrants do not have education recorded.

Percent High School or Higher = 60.0%

Percent 1<sup>st</sup> Grade/Never Attended = 14.3%