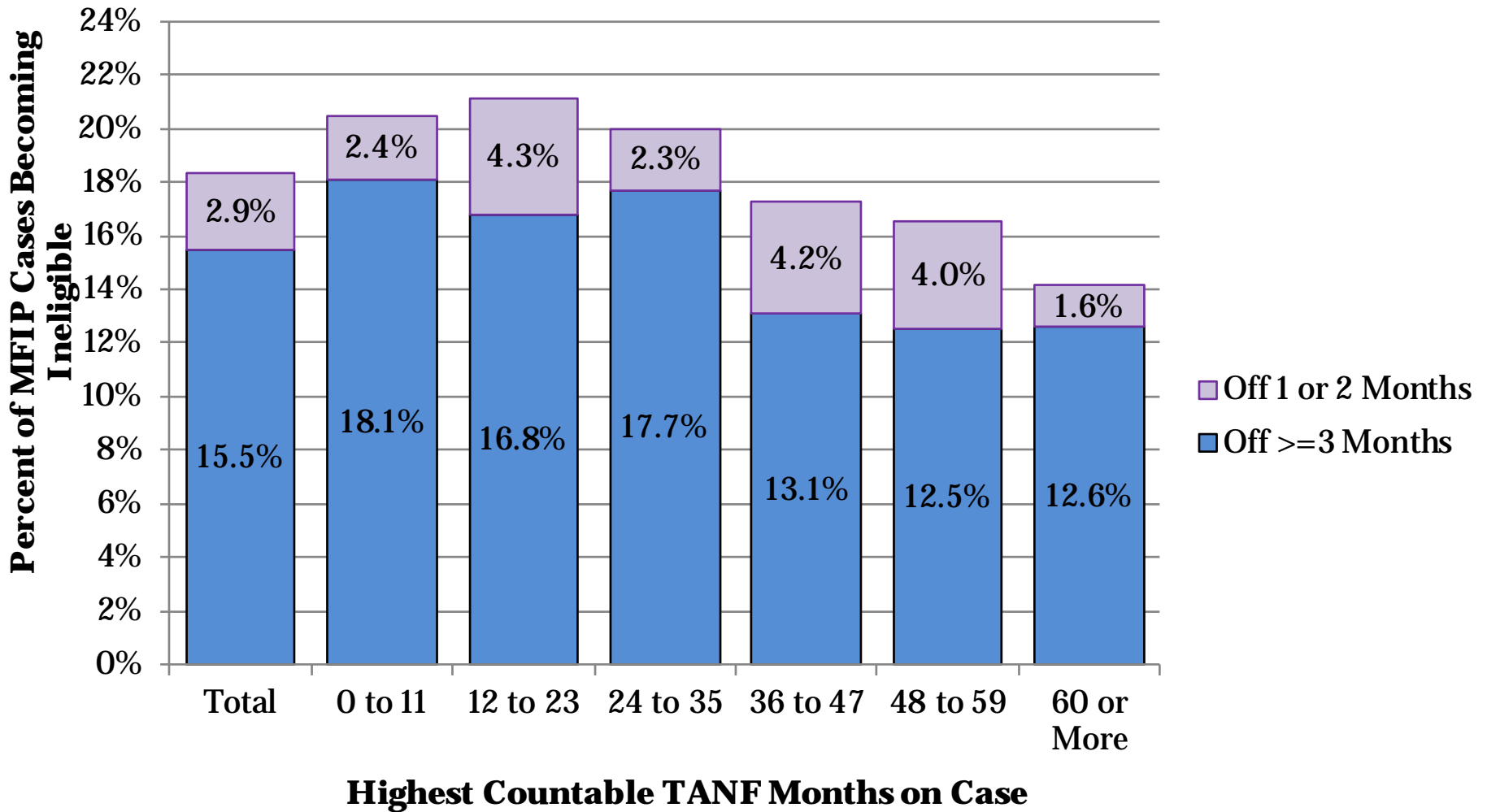


MFIP-Employment Services  
County-Wide Indicators,  
April - June, 2017

Published November 8, 2017

Compiled by Health and Wellness Services Administration, Office of Research & Evaluation

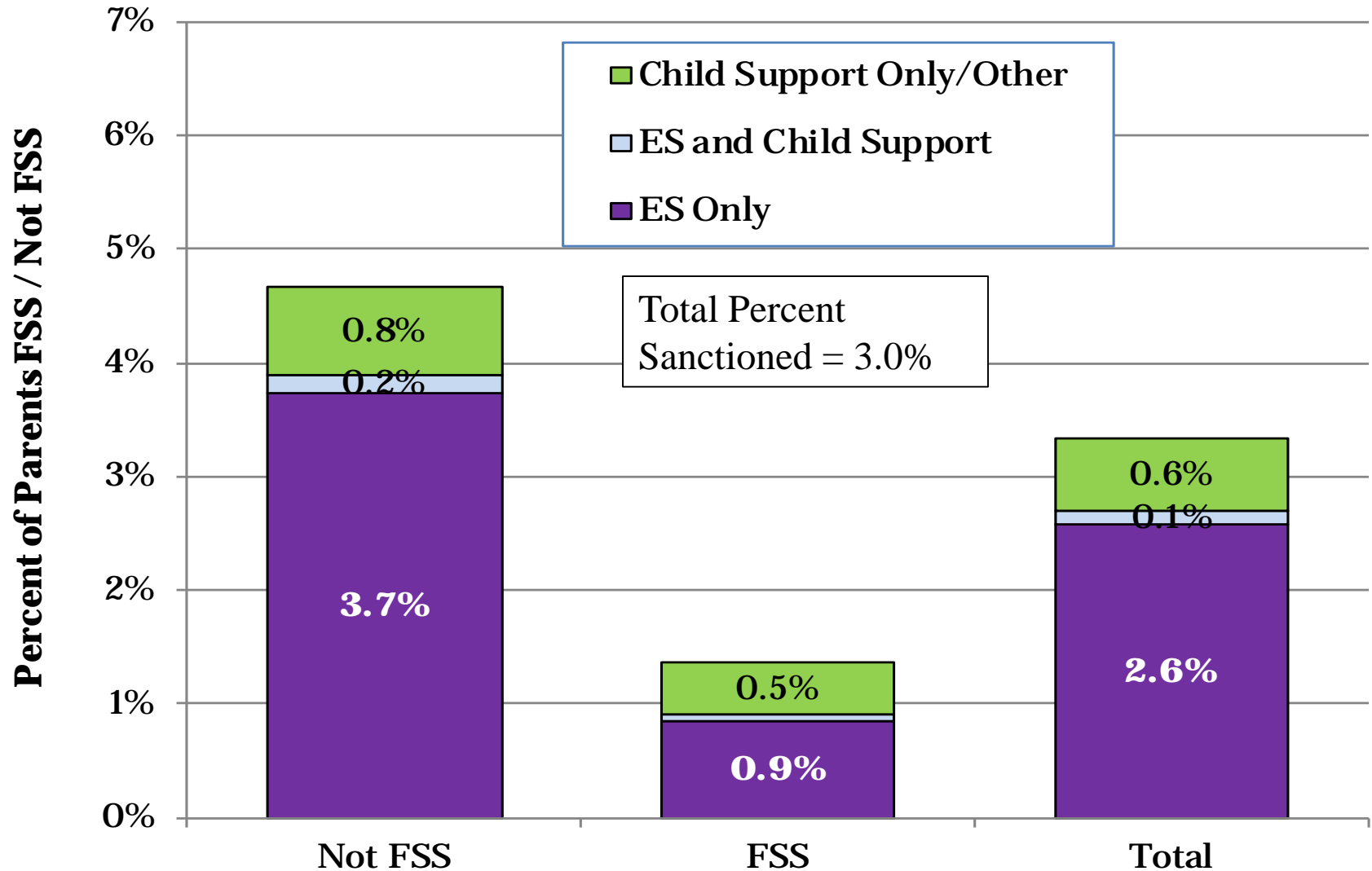
# 1. Cases Leaving MFIP\* Over Apr-Jun 2017, Ineligible on MAXIS in Following Months



\*Note: All parents ineligible for both MFIP cash and MFIP food portion anywhere in Minnesota

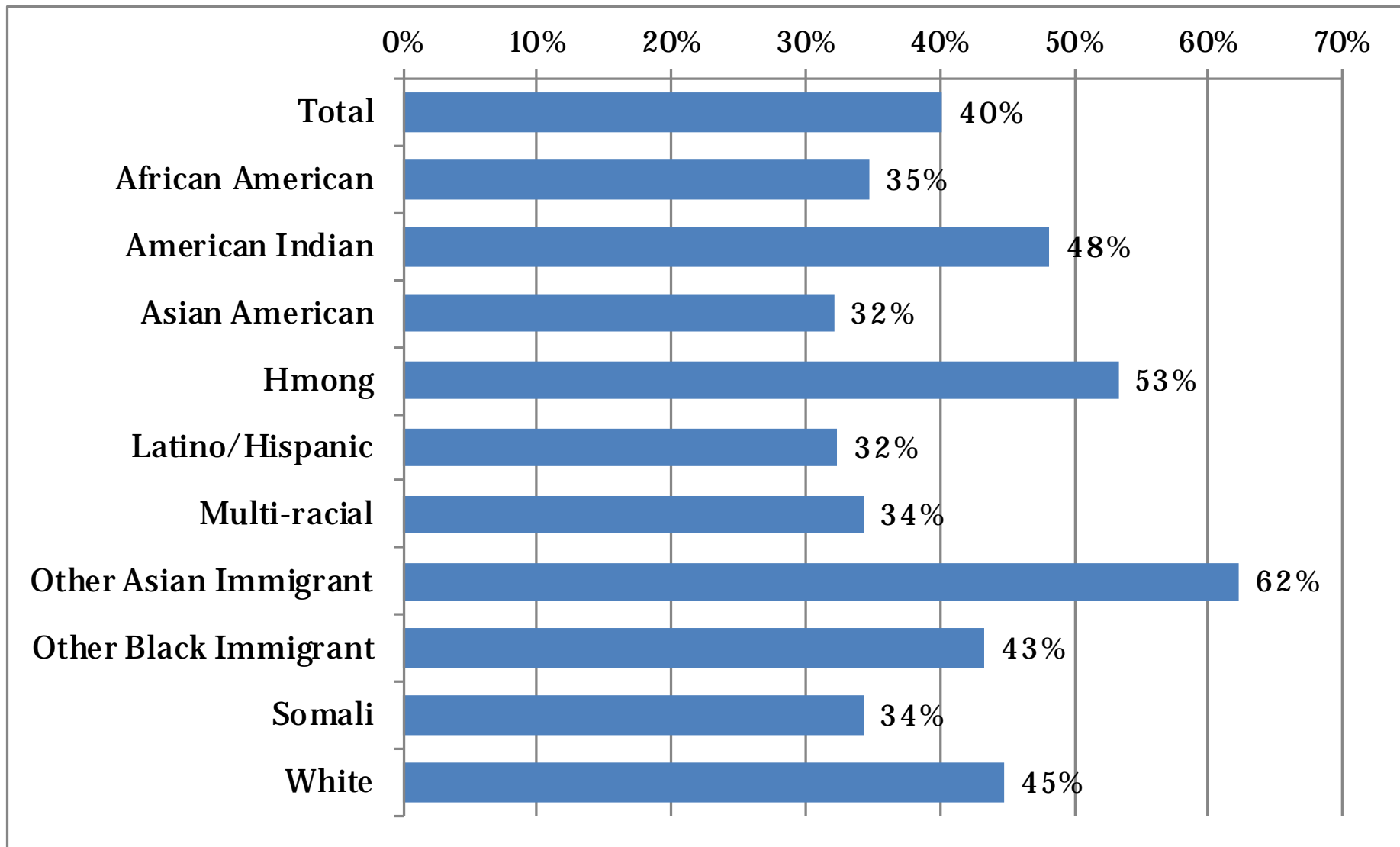
Total cases eligible in any month of quarter = 4,744

## 2. MFIP Parents, Sanction Rates Per Month Apr-Jun 2017



Average MFIP Parents Eligible per month on MAXIS:  
 Not FSS = 2,845      FSS = 1,908

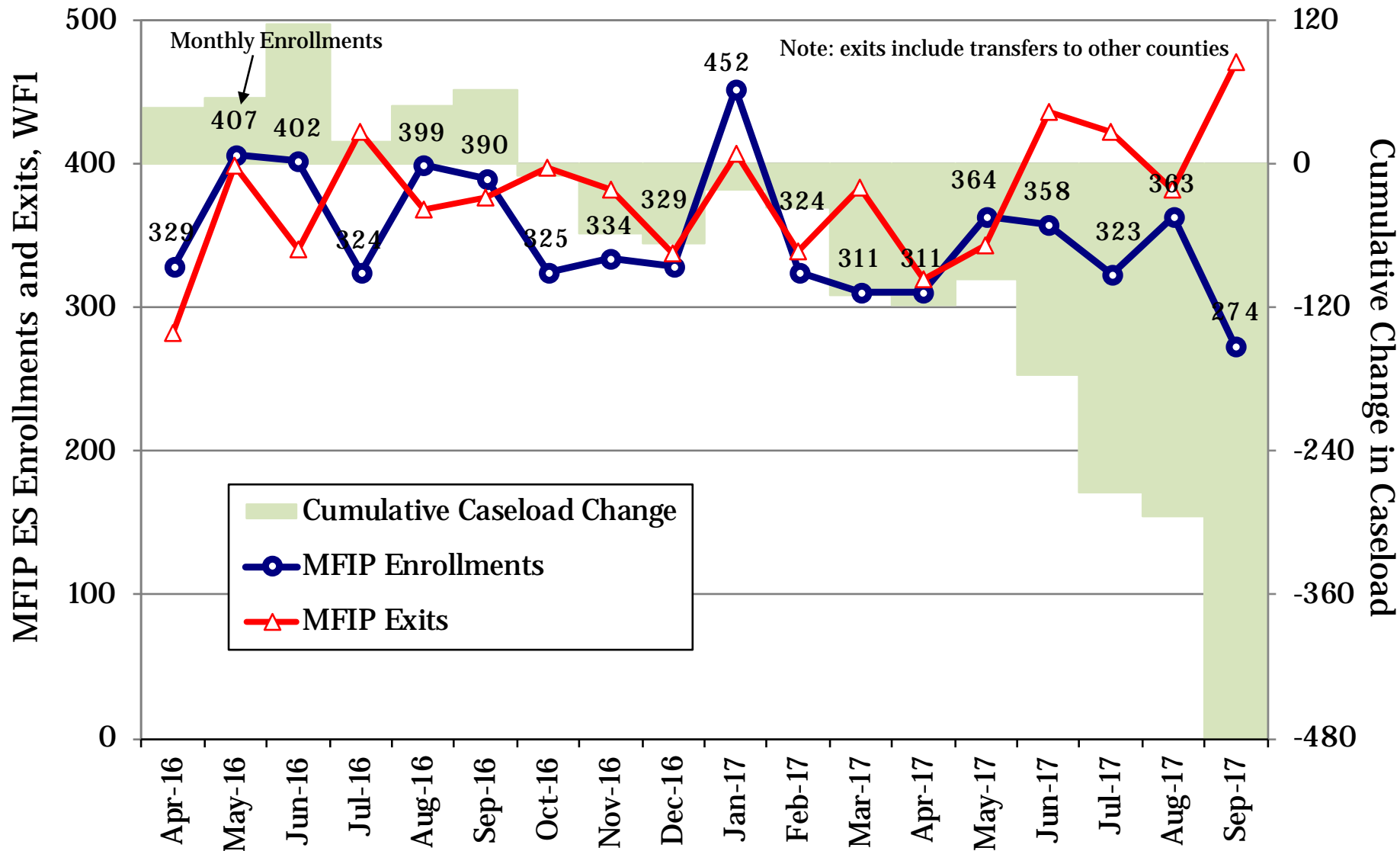
### 3. Family Stabilization Services, Percent of Total Parents on MFIP Apr-Jun 2017



Average FSS persons per month on MAXIS = 1,908

Average total persons per month on MAXIS = 4,754

# 4. MFIP Employment Services WF1 Enrollments and Exits, Prior 18 Months



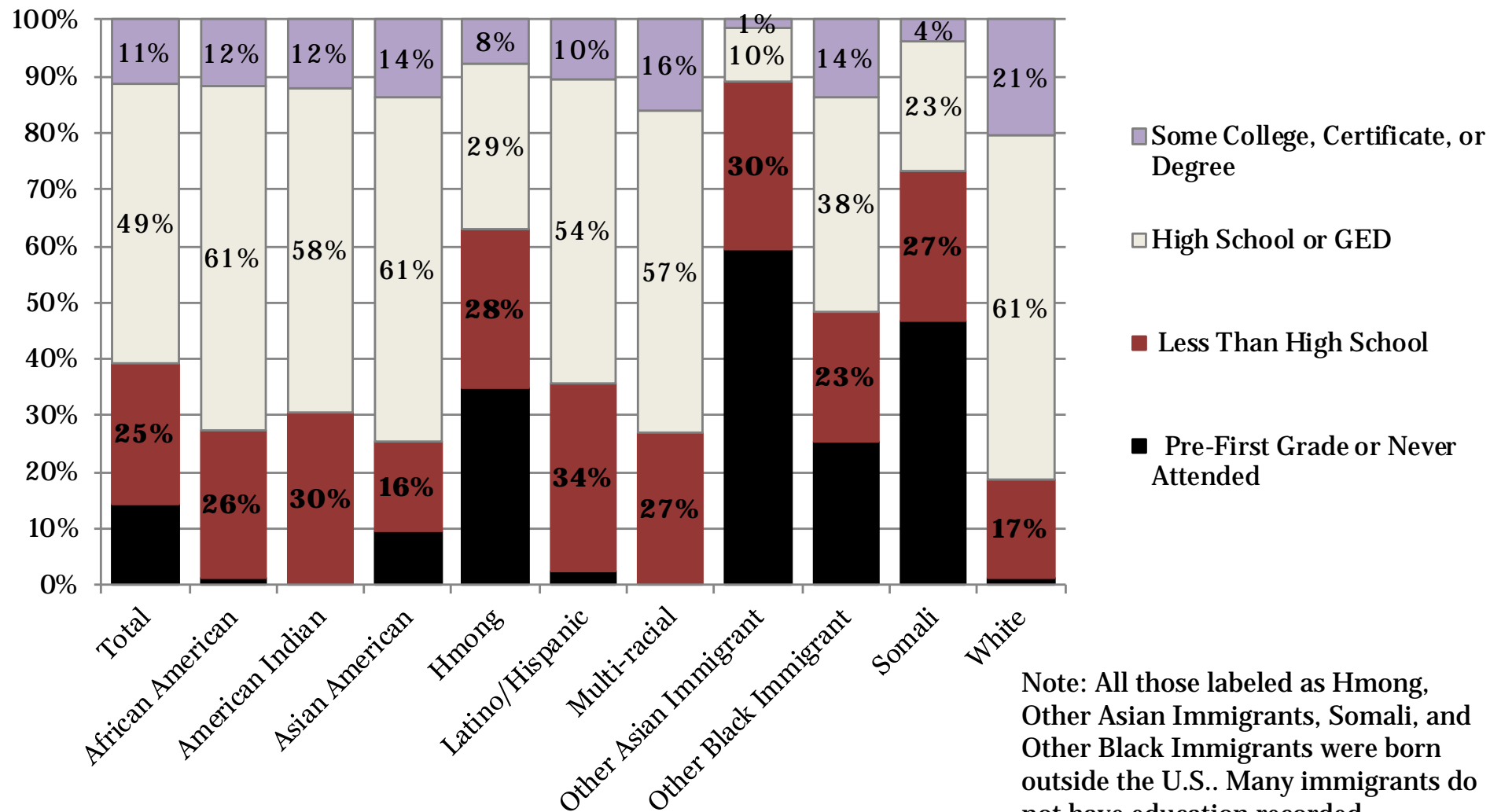
Total MFIP-ES Enrollments = 6,319  
 Total MFIP-ES Exits = 6,810

**Net Change = -490**

Open on WF1 at Start = 5,226  
 Open on WF1 at End = 4,736

# 5. Highest Educational Attainment from WF1 or MAXIS, MFIP Parents Apr-Jun 2017

MFIP Parents Open with ES Agency First of Month and Excludes Child under 1 Exemptions



Note: All those labeled as Hmong, Other Asian Immigrants, Somali, and Other Black Immigrants were born outside the U.S.. Many immigrants do not have education recorded.

Percent High School or Higher = 60.5%    Percent 1<sup>st</sup> Grade/Never Attended = 14.2%

# 6. High School Completion and GED Hours

Average Percent of Participants per Month, April-June 2017

MFIP Parents Open with an ES Agency First of Month and Excludes Child under 1 Exemptions

## Average Participants Without HS Diploma by Monthly Hours

| Agency on First of Month      | Total Without<br>GED or HS<br>Diploma | Percent of Total |                  |                   |             | Any Hours   |
|-------------------------------|---------------------------------------|------------------|------------------|-------------------|-------------|-------------|
|                               |                                       | 0 Hours          | 1 to 42<br>Hours | 43 to 86<br>Hours | 87 or More  |             |
| <b>Assisted Services</b>      | <b>1,279</b>                          | <b>98.4%</b>     | <b>1.0%</b>      | <b>0.2%</b>       | <b>0.4%</b> | <b>1.6%</b> |
| American Indian Family Center | 26                                    | 89.9%            | 10.1%            | 0.0%              | 0.0%        | 10.1%       |
| Employment Action Center      | 168                                   | 100.0%           | 0.0%             | 0.0%              | 0.0%        | 0.0%        |
| Goodwill-Easter Seals         | 136                                   | 97.3%            | 2.4%             | 0.2%              | 0.0%        | 2.7%        |
| HIRED-Age 22 and Older        | 138                                   | 99.3%            | 0.2%             | 0.0%              | 0.5%        | 0.7%        |
| HIRED-Young Parents Under 22  | 122                                   | 92.9%            | 2.7%             | 1.1%              | 3.3%        | 7.1%        |
| Hmong American Partnership    | 469                                   | 100.0%           | 0.0%             | 0.0%              | 0.0%        | 0.0%        |
| Workforce Solutions-AST       | 170                                   | 99.0%            | 1.0%             | 0.0%              | 0.0%        | 1.0%        |
| YWCA                          | 49                                    | 95.2%            | 2.0%             | 2.7%              | 0.0%        | 4.8%        |
| Ramsey County Public Health   | 38                                    | 14.9%            | 38.6%            | 45.6%             | 0.9%        | 85.1%       |
| Workforce Solutions-EXS       | 266                                   | 97.6%            | 2.3%             | 0.1%              | 0.0%        | 2.4%        |

# 7. Work Preparation Activities,

**Average Percent of Participants by FWL, ESL, and ABE Hours per Month Combined, April-June 2017  
MFIP Parents Open with an ES Agency First of Month and Excludes Child under 1 Exemptions**

## Average Participants by Monthly Hours

| Agency on First of Month      | Total Active | Percent of Total |               |                |             | Any Hours   |
|-------------------------------|--------------|------------------|---------------|----------------|-------------|-------------|
|                               |              | 0 Hours          | 1 to 42 Hours | 43 to 86 Hours | 87 or More  |             |
| <b>Assisted Services</b>      | <b>3,288</b> | <b>92.8%</b>     | <b>3.9%</b>   | <b>3.1%</b>    | <b>0.2%</b> | <b>7.2%</b> |
| American Indian Family Center | 97           | 99.7%            | 0.3%          | 0.0%           | 0.0%        | 0.3%        |
| Employment Action Center      | 529          | 92.2%            | 4.8%          | 2.7%           | 0.3%        | 7.8%        |
| Goodwill-Easter Seals         | 454          | 93.9%            | 4.2%          | 1.3%           | 0.6%        | 6.1%        |
| HIRED-Age 22 and Older        | 455          | 98.7%            | 1.2%          | 0.1%           | 0.0%        | 1.3%        |
| HIRED-Young Parents Under 22  | 273          | 99.4%            | 0.2%          | 0.2%           | 0.1%        | 0.6%        |
| Hmong American Partnership    | 580          | 74.4%            | 12.1%         | 13.0%          | 0.6%        | 25.6%       |
| Workforce Solutions-AST       | 625          | 97.9%            | 1.3%          | 0.8%           | 0.0%        | 2.1%        |
| YWCA                          | 275          | 100.0%           | 0.0%          | 0.0%           | 0.0%        | 0.0%        |
| Ramsey County Public Health   | 50           | 100.0%           | 0.0%          | 0.0%           | 0.0%        | 0.0%        |
| Workforce Solutions-EXS       | 904          | 99.7%            | 0.2%          | 0.1%           | 0.0%        | 0.3%        |



# 8. Training up to 12 Months and 13 or More Months

Average Percent of Total Participants by Training Hours Per Month, April-June 2017  
 MFIP Parents Open with an ES Agency First of Month and Excludes Child under 1 Exemptions

## Average Participants by Monthly Hours

| Agency on First of Month      | Total Active | Percent of Total |               |                |             | Any Hours   |
|-------------------------------|--------------|------------------|---------------|----------------|-------------|-------------|
|                               |              | 0 Hours          | 1 to 42 Hours | 43 to 86 Hours | 87 or More  |             |
| <b>Assisted Services</b>      | <b>3,288</b> | <b>96.4%</b>     | <b>1.0%</b>   | <b>1.1%</b>    | <b>1.5%</b> | <b>3.6%</b> |
| American Indian Family Center | 97           | 98.6%            | 0.0%          | 1.0%           | 0.3%        | 1.4%        |
| Employment Action Center      | 529          | 96.5%            | 0.3%          | 0.6%           | 2.6%        | 3.5%        |
| Goodwill-Easter Seals         | 454          | 95.2%            | 1.8%          | 1.5%           | 1.5%        | 4.8%        |
| HIRED-Age 22 and Older        | 455          | 96.4%            | 1.0%          | 1.3%           | 1.3%        | 3.6%        |
| HIRED-Young Parents Under 22  | 273          | 93.3%            | 1.8%          | 2.1%           | 2.8%        | 6.7%        |
| Hmong American Partnership    | 580          | 99.6%            | 0.3%          | 0.1%           | 0.1%        | 0.4%        |
| Workforce Solutions-AST       | 625          | 95.5%            | 1.7%          | 1.4%           | 1.4%        | 4.5%        |
| YWCA                          | 275          | 95.6%            | 0.7%          | 1.7%           | 1.9%        | 4.4%        |
| Ramsey County Public Health   | 50           | 99.3%            | 0.7%          | 0.0%           | 0.0%        | 0.7%        |
| Workforce Solutions-EXS       | 904          | 98.1%            | 0.6%          | 0.7%           | 0.6%        | 1.9%        |

# 9. All Education and Training Hours,

Average Participants by Hours Per Month, April-June 2017

Total high school completion, GED, ESL, FWL, ABE, and training hours combined

MFIP Parents Open with an ES Agency First of Month and Excludes Child under 1 Exemptions

## Average Participants by Monthly Hours

| Agency on First of Month      | Total Active | Percent of Total |               |                |             | Any Hours    |
|-------------------------------|--------------|------------------|---------------|----------------|-------------|--------------|
|                               |              | 0 Hours          | 1 to 42 Hours | 43 to 86 Hours | 87 or More  |              |
| <b>Assisted Services</b>      | <b>3,288</b> | <b>88.2%</b>     | <b>5.5%</b>   | <b>4.4%</b>    | <b>1.9%</b> | <b>11.8%</b> |
| American Indian Family Center | 97           | 95.5%            | 3.1%          | 1.0%           | 0.3%        | 4.5%         |
| Employment Action Center      | 529          | 88.2%            | 5.4%          | 3.3%           | 3.0%        | 11.8%        |
| Goodwill-Easter Seals         | 454          | 87.7%            | 7.0%          | 3.1%           | 2.1%        | 12.3%        |
| HIRED-Age 22 and Older        | 455          | 94.6%            | 2.5%          | 1.5%           | 1.5%        | 5.4%         |
| HIRED-Young Parents Under 22  | 273          | 89.0%            | 3.4%          | 3.1%           | 4.5%        | 11.0%        |
| Hmong American Partnership    | 580          | 74.0%            | 12.3%         | 13.0%          | 0.6%        | 26.0%        |
| Workforce Solutions-AST       | 625          | 92.8%            | 3.5%          | 2.2%           | 1.4%        | 7.2%         |
| YWCA                          | 275          | 94.7%            | 1.2%          | 2.2%           | 1.9%        | 5.3%         |
| Ramsey County Public Health   | 50           | 11.9%            | 43.0%         | 44.4%          | 0.7%        | 88.1%        |
| Workforce Solutions-EXS       | 904          | 96.9%            | 1.7%          | 0.9%           | 0.6%        | 3.1%         |

# 10. MFIP Cases Monthly Work Participation Rates, Past 15 Months

Excludes cases with 2-parents, off cash grant, with 1-3 sanctions, or on FSS

