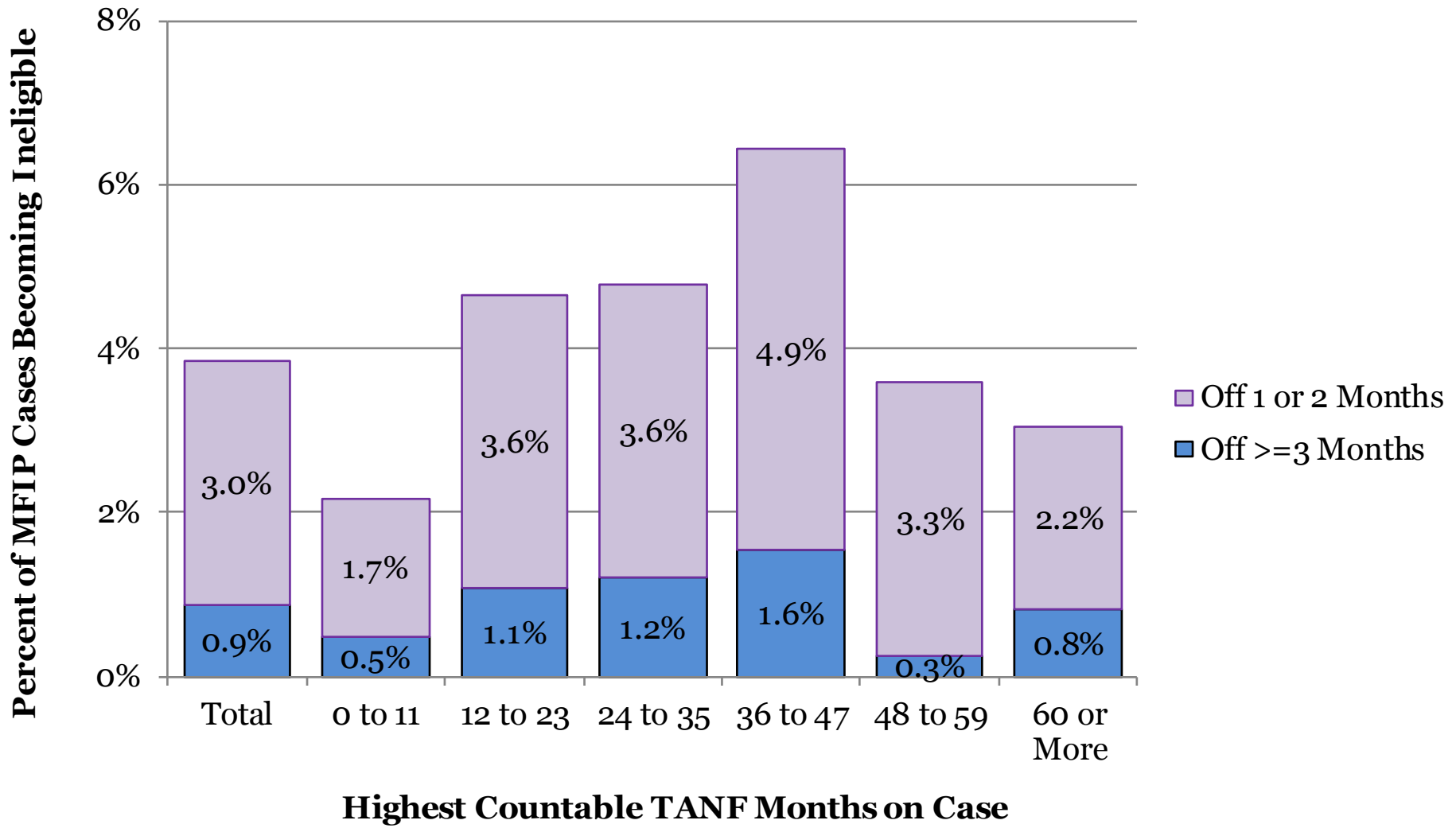


MFIP-Employment Services
County-Wide Indicators
April - June, 2019

Published September 26, 2019

Compiled by Health and Wellness Services Administration, Office of Research & Evaluation

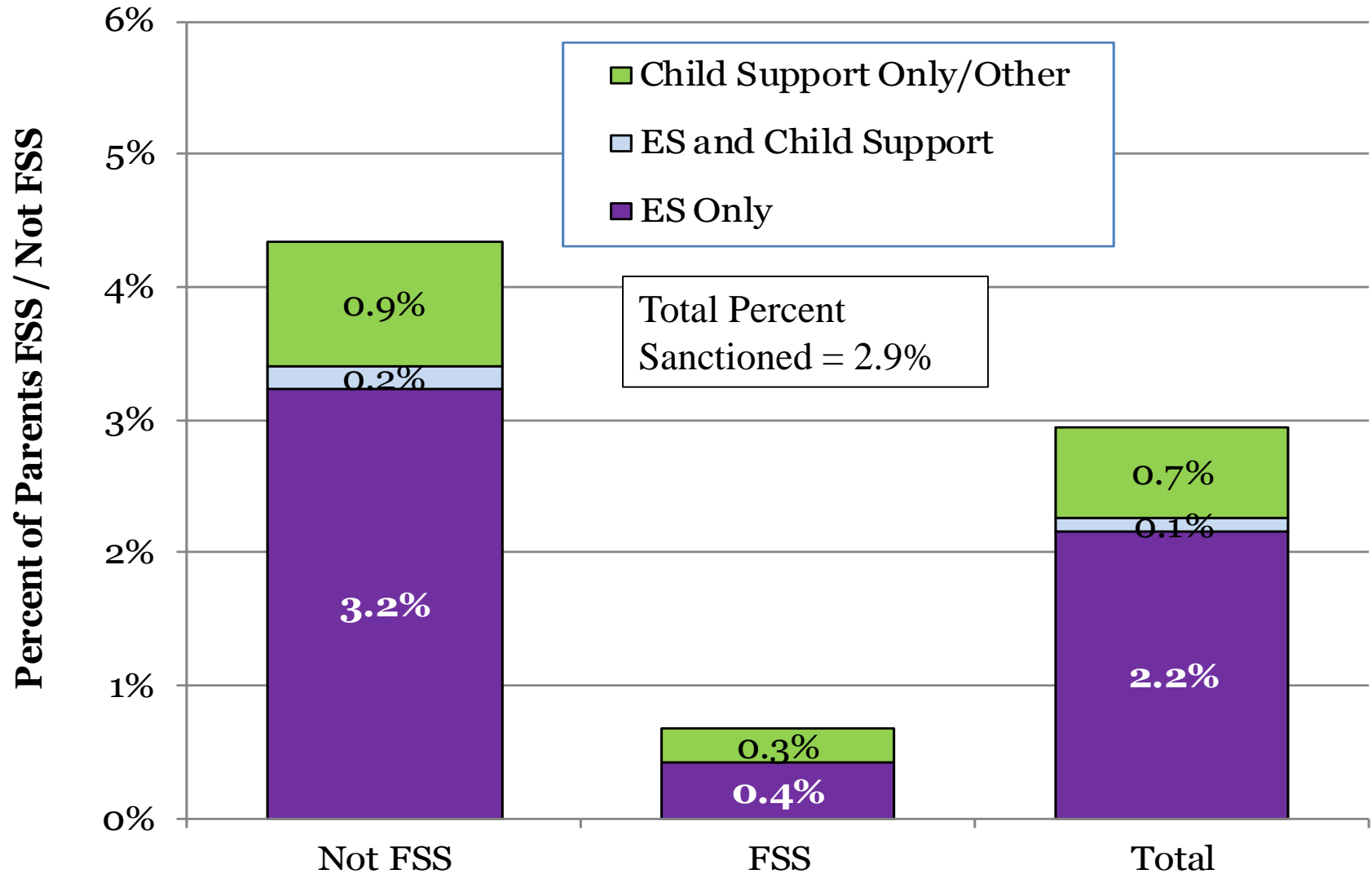
1. Cases Leaving MFIP* Over Apr-Jun 2019, Ineligible on MAXIS in Following Months



*Note: All parents ineligible for both MFIP cash and MFIP food portion anywhere in Minnesota

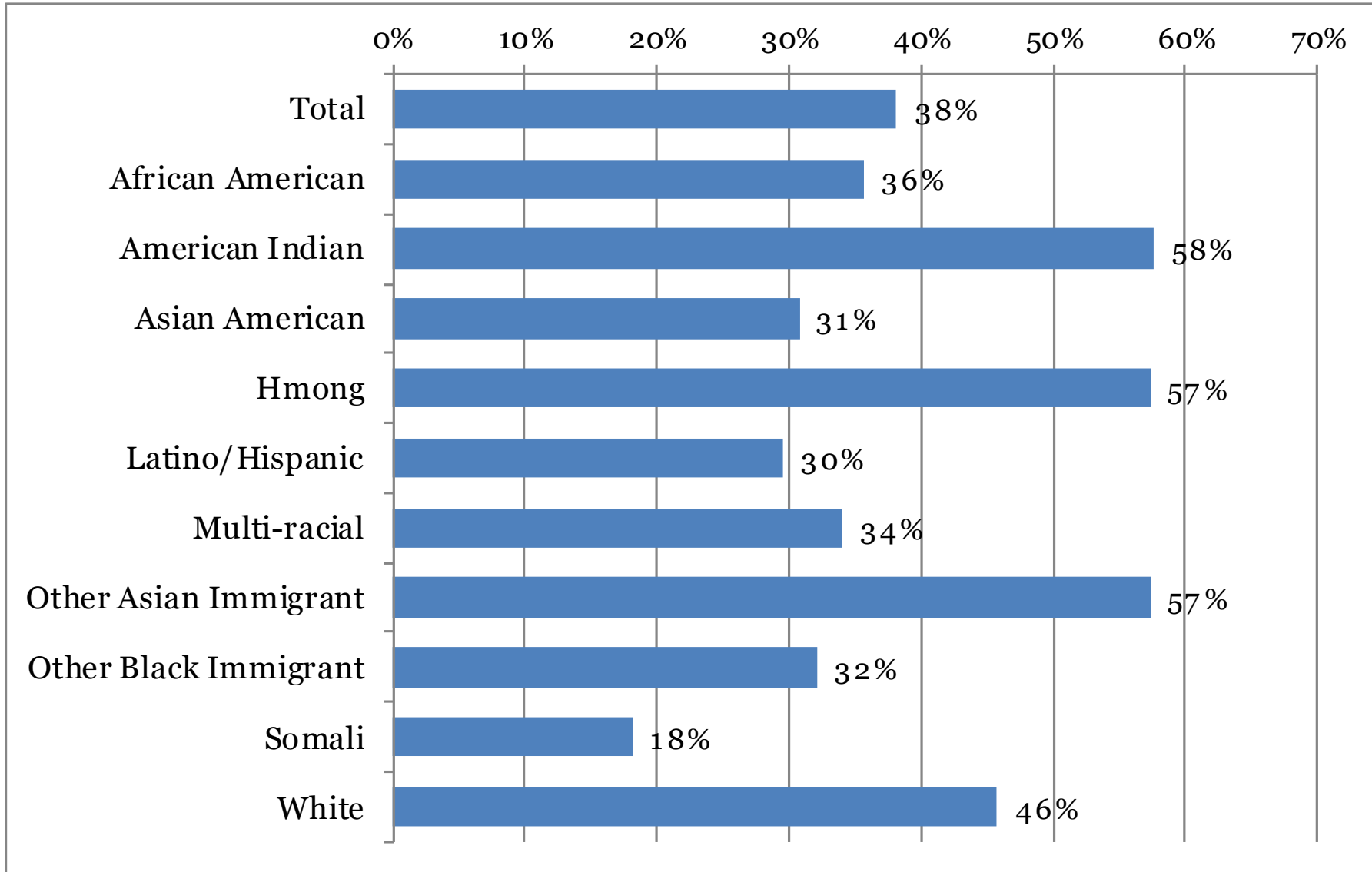
Total cases eligible in any month of quarter = 3,878

2. MFIP Parents, Sanction Rates Per Month Apr-Jun 2019



Average MFIP Parents Eligible per month on MAXIS:
 Not FSS = 2,325 FSS = 1,434

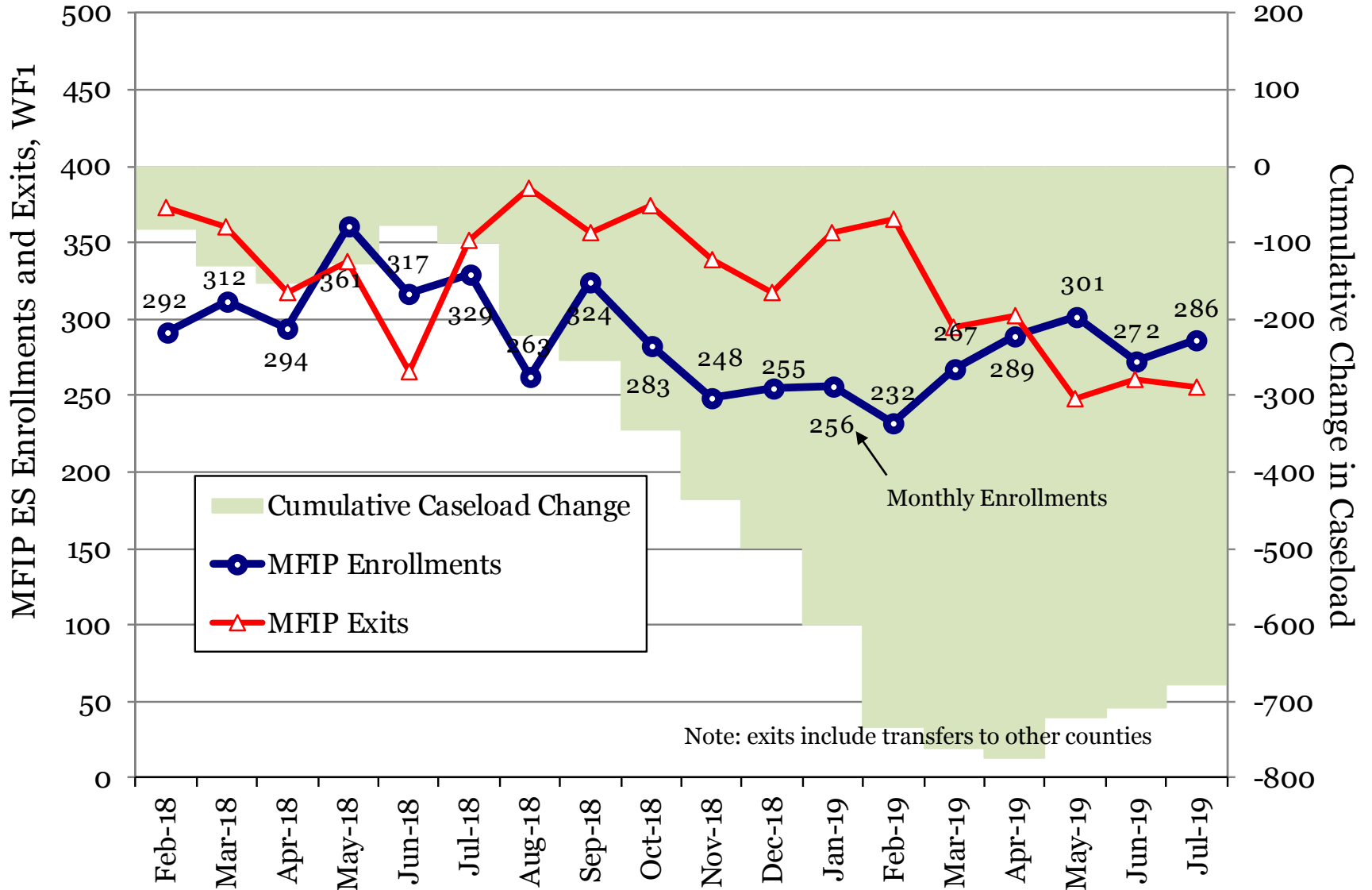
3. Family Stabilization Services, Percent of Total Parents on MFIP Apr-Jun 2019



Average FSS persons per month on MAXIS = 1,434

Average total persons per month on MAXIS = 3,759

4. MFIP Employment Services WF1 Enrollments and Exits, Prior 18 Months



Note: exits include transfers to other counties

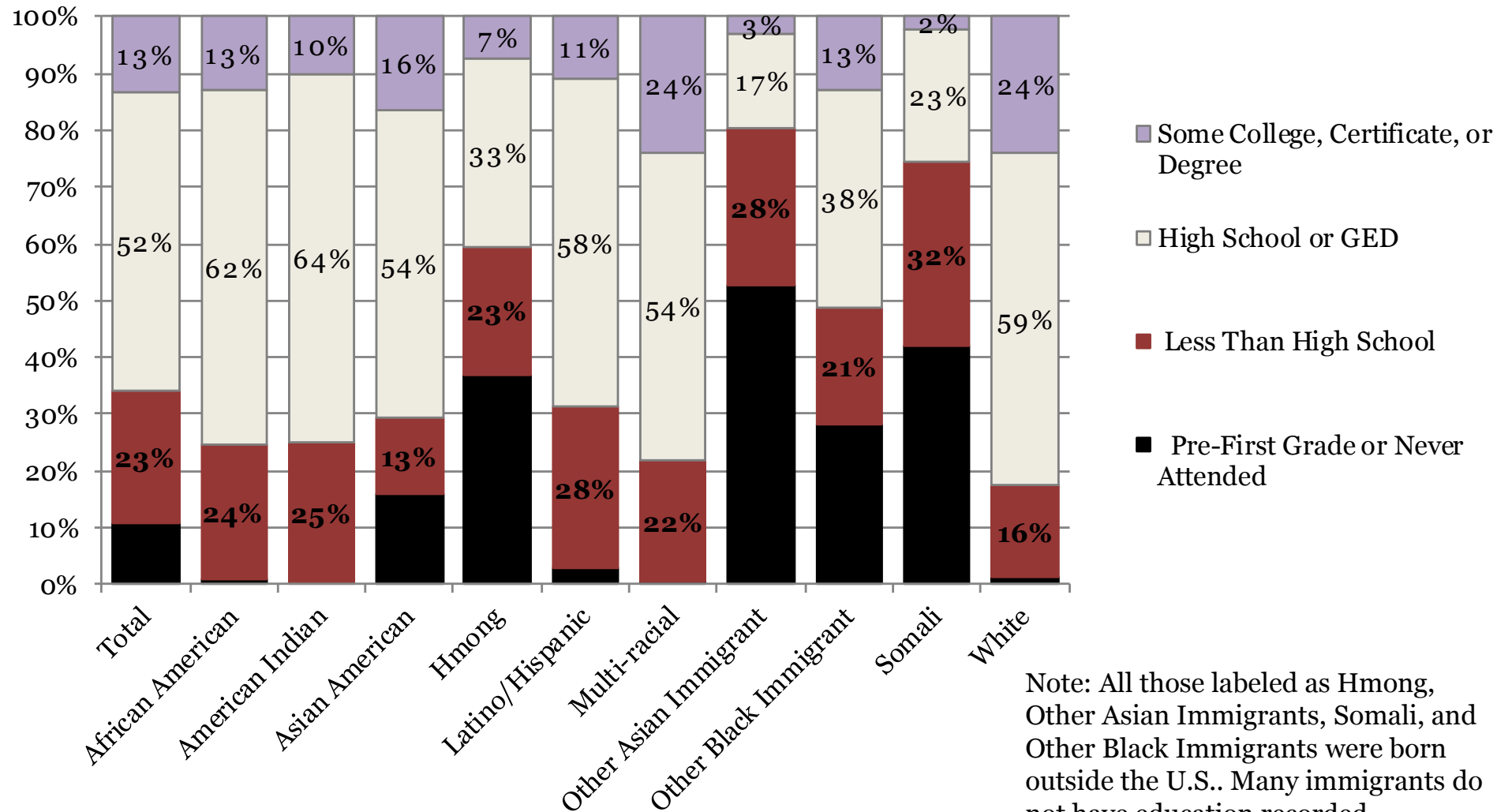
Total MFIP-ES Enrollments = 5,181
Total MFIP-ES Exits = 6,859

Net Change = -681

Open on WF1 at Start = 4,555
Open on WF1 at End = 3,874

5. Highest Educational Attainment from WF1 or MAXIS, MFIP Parents Apr-Jun 2019

MFIP Parents Open with ES Agency First of Month and Excludes Child under 1 Exemptions



Note: All those labeled as Hmong, Other Asian Immigrants, Somali, and Other Black Immigrants were born outside the U.S.. Many immigrants do not have education recorded.

Percent High School or Higher = 65.8% Percent 1st Grade/Never Attended = 10.8%

6. High School Completion and GED Hours

Average Percent of Participants per Month, January-March 2019

MFIP Parents Open with an ES Agency First of Month and Excludes Child under 1 Exemptions

Average Participants Without HS Diploma by Monthly Hours						
Agency on First of Month	Total Without GED or HS Diploma	Percent of Total				
		0 Hours	1 to 42 Hours	43 to 86 Hours	87 or More	Any Hours
Assisted Services	804	99.0%	0.6%	0.0%	0.3%	1.0%
American Indian Family Center	12	97.2%	2.8%	0.0%	0.0%	2.8%
Employment Action Center	117	98.6%	0.6%	0.0%	0.9%	1.4%
Goodwill-Easter Seals	67	96.5%	3.5%	0.0%	0.0%	3.5%
HIRED-Age 22 and Older	109	99.1%	0.3%	0.0%	0.6%	0.9%
HIRED-Young Parents Under 22	77	97.4%	1.7%	0.0%	0.9%	2.6%
Hmong American Partnership	257	100.0%	0.0%	0.0%	0.0%	0.0%
Workforce Solutions-AST	126	99.7%	0.0%	0.0%	0.3%	0.3%
YWCA	38	100.0%	0.0%	0.0%	0.0%	0.0%
Ramsey County Public Health	31	31.2%	35.5%	31.2%	2.2%	68.8%
Workforce Solutions-EXS	229	99.1%	0.7%	0.0%	0.1%	0.9%

7. Work Preparation Activities

Average Percent of Participants by FWL, ESL, and ABE Hours per Month Combined,
January-March 2019 MFIP Parents Open with an ES Agency First of Month
and Excludes Child under 1 Exemptions

Average Participants by Monthly Hours in FWL, ESL, or ABE						
Agency on First of Month	Total Active	0 Hours	Percent of Total			Any Hours
			1 to 42 Hours	43 to 86 Hours	87 or More	
Assisted Services	2,453	97.3%	1.6%	1.1%	0.0%	2.7%
American Indian Family Center	70	100.0%	0.0%	0.0%	0.0%	0.0%
Employment Action Center	371	96.0%	2.2%	1.6%	0.1%	4.0%
Goodwill-Easter Seals	317	96.7%	2.4%	0.8%	0.0%	3.3%
HIRED-Age 22 and Older	393	98.6%	0.8%	0.5%	0.0%	1.4%
HIRED-Young Parents Under 22	211	100.0%	0.0%	0.0%	0.0%	0.0%
Hmong American Partnership	336	92.4%	3.3%	4.2%	0.2%	7.6%
Workforce Solutions-AST	513	98.1%	1.6%	0.3%	0.0%	1.9%
YWCA	242	100.0%	0.0%	0.0%	0.0%	0.0%
Ramsey County Public Health	46	100.0%	0.0%	0.0%	0.0%	0.0%
Workforce Solutions-EXS	840	99.9%	0.1%	0.0%	0.0%	0.1%

8. Training up to 12 Months and 13 or More Months

Average Percent of Total Participants by Training Hours Per Month, January-March 2019
 MFIP Parents Open with an ES Agency First of Month and Excludes Child under 1 Exemptions

Average Participants by Monthly Hours in Training Activities						
Agency on First of Month	Total Active	Percent of Total				Any Hours
		0 Hours	1 to 42 Hours	43 to 86 Hours	87 or More	
Assisted Services	2,453	97.0%	0.6%	0.9%	1.5%	3.0%
American Indian Family Center	70	100.0%	0.0%	0.0%	0.0%	0.0%
Employment Action Center	371	95.3%	0.6%	1.2%	2.9%	4.7%
Goodwill-Easter Seals	317	96.1%	1.2%	2.0%	0.7%	3.9%
HIRED-Age 22 and Older	393	96.9%	0.6%	0.9%	1.6%	3.1%
HIRED-Young Parents Under 22	211	96.8%	0.3%	0.5%	2.4%	3.2%
Hmong American Partnership	336	99.8%	0.0%	0.1%	0.1%	0.2%
Workforce Solutions-AST	513	96.7%	0.5%	1.2%	1.6%	3.3%
YWCA	242	97.0%	1.0%	0.6%	1.5%	3.0%
Ramsey County Public Health	46	100.0%	0.0%	0.0%	0.0%	0.0%
Workforce Solutions-EXS	840	98.3%	0.5%	0.4%	0.8%	1.7%

9. All Education and Training Hours

Average Participants by Hours Per Month, January-March 2019

Total high school completion, GED, ESL, FWL, ABE, and training hours combined

MFIP Parents Open with an ES Agency First of Month and Excludes Child under 1 Exemptions

Average Participants by Monthly Hours in Any Education Activity						
Agency on First of Month	Total Active	Percent of Total				Any Hours
		0 Hours	1 to 42 Hours	43 to 86 Hours	87 or More	
Assisted Services	2,453	93.9%	2.4%	2.1%	1.6%	6.1%
American Indian Family Center	70	99.5%	0.5%	0.0%	0.0%	0.5%
Employment Action Center	371	90.9%	3.1%	2.8%	3.2%	9.1%
Goodwill-Easter Seals	317	92.1%	4.0%	3.2%	0.7%	7.9%
HIRED-Age 22 and Older	393	95.1%	1.7%	1.4%	1.8%	4.9%
HIRED-Young Parents Under 22	211	95.4%	1.4%	0.5%	2.7%	4.6%
Hmong American Partnership	336	92.2%	3.3%	4.3%	0.3%	7.8%
Workforce Solutions-AST	513	94.5%	2.3%	1.5%	1.7%	5.5%
YWCA	242	97.0%	1.0%	0.6%	1.5%	3.0%
Ramsey County Public Health	46	26.8%	40.6%	29.0%	3.6%	73.2%
Workforce Solutions-EXS	840	97.9%	0.9%	0.4%	0.8%	2.1%

10. MFIP Cases Monthly Work Participation Rates, Past 12 Months

Excludes cases with 2-parents, off cash grant, with 1-3 sanctions, or on FSS

