

MFIP-Employment Services

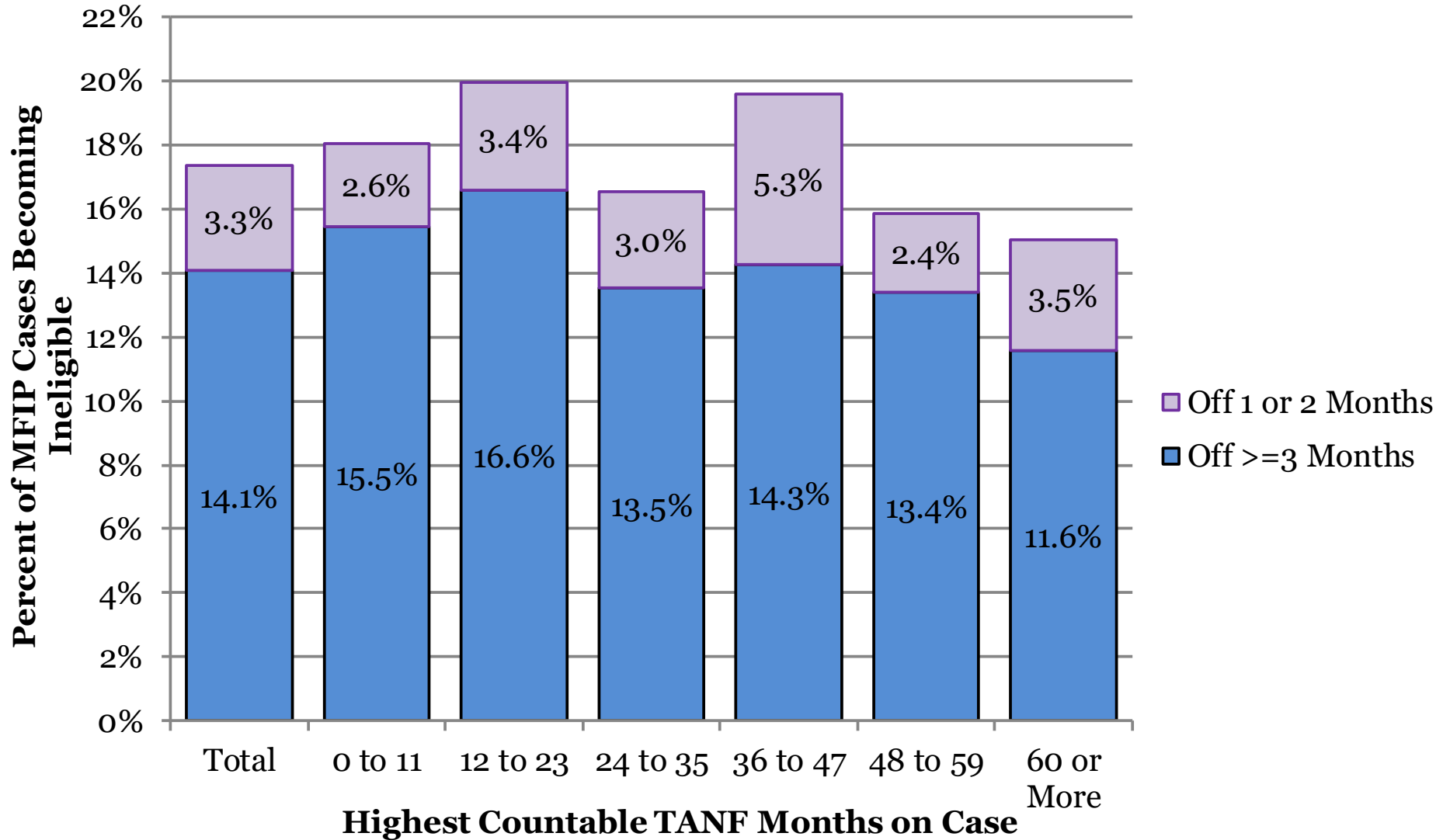
County-Wide Indicators

April-June, 2020

Published November 4, 2020

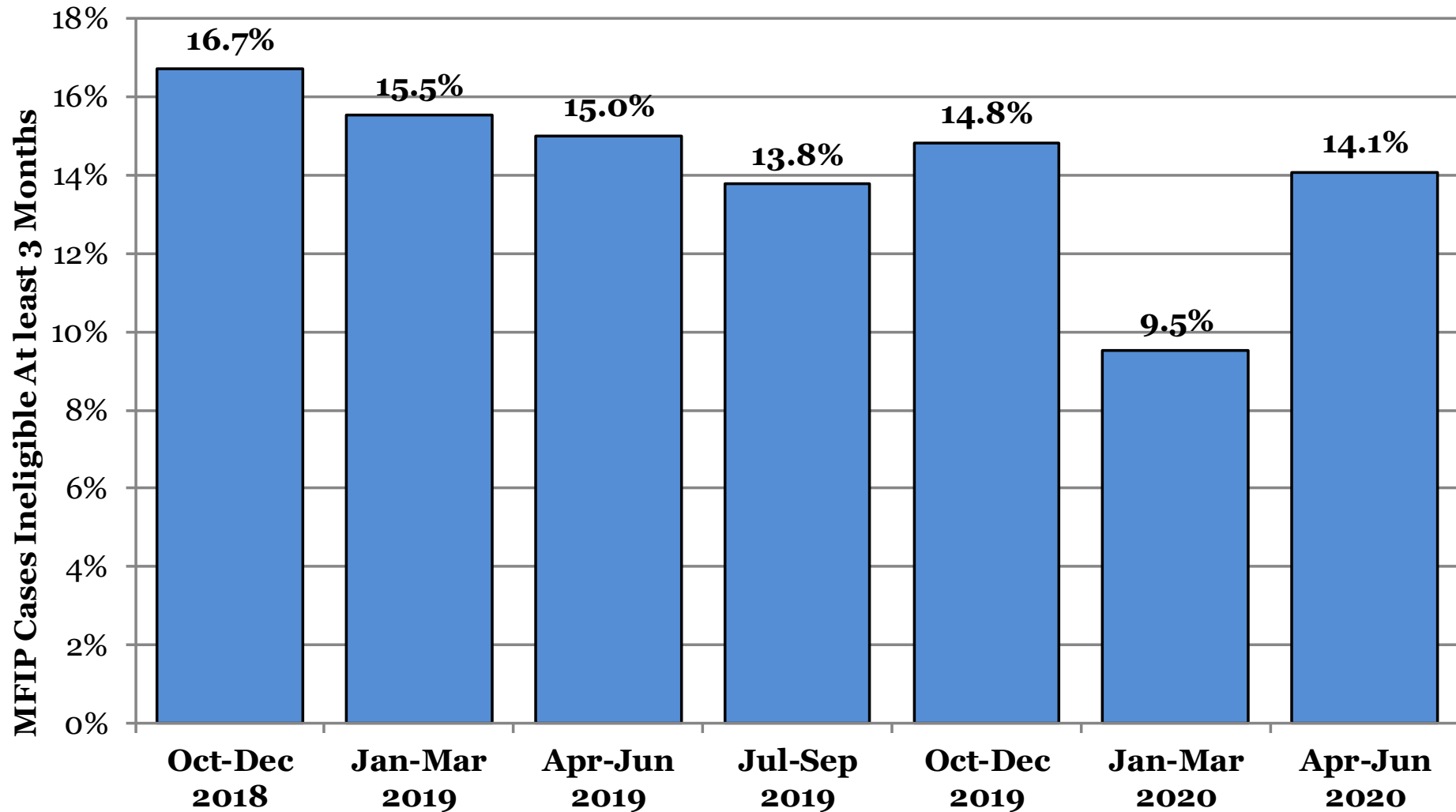
Compiled by Health and Wellness Services Administration, Office of Research & Evaluation

1. Cases Leaving MFIP* Over Apr-Jun 2020, Ineligible on MAXIS in Following Months



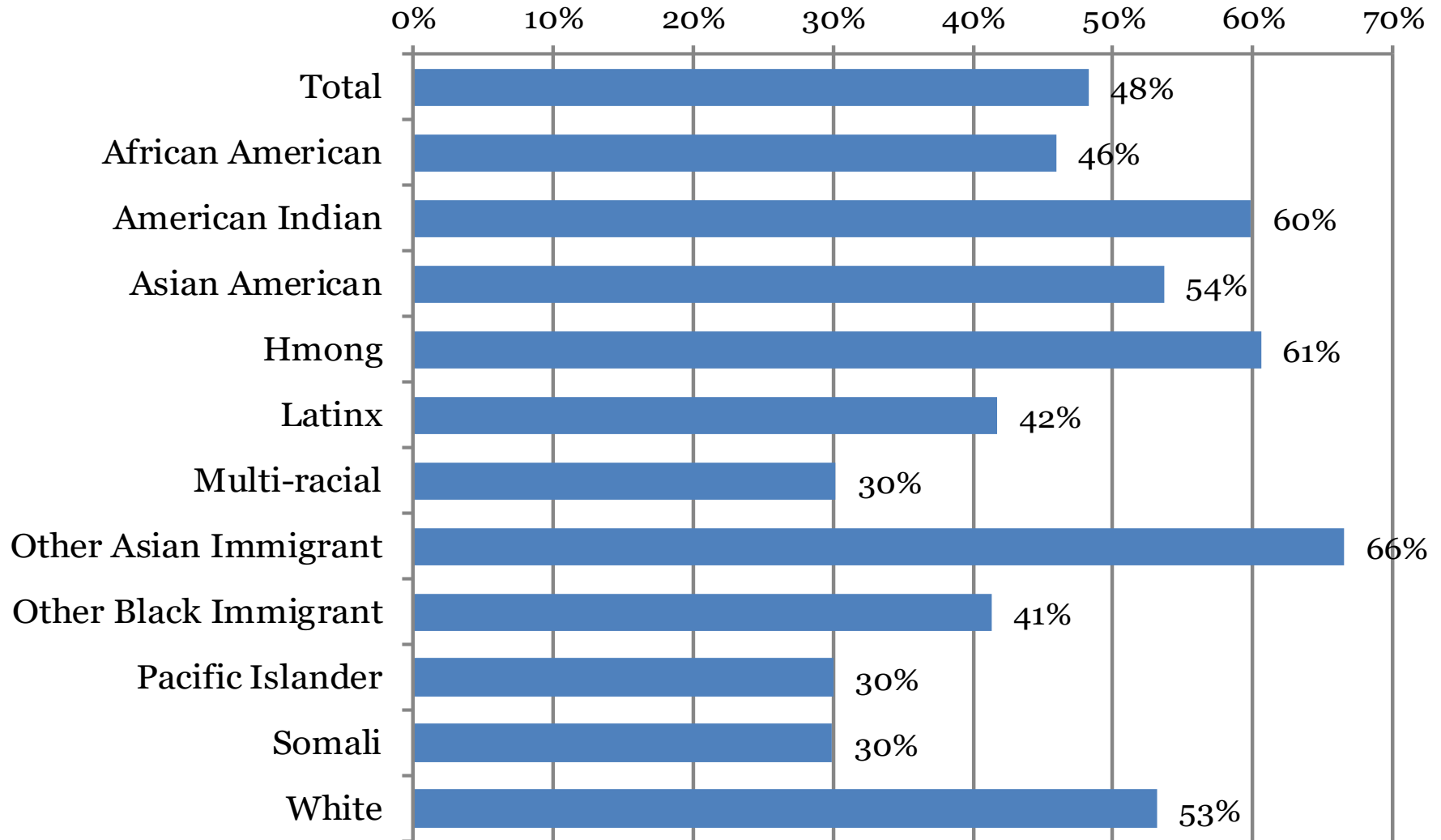
*Note: All parents in case ineligible for both MFIP cash and MFIP food portion anywhere in Minnesota
Total cases eligible in any month of quarter = 4,246

1a. Cases Leaving MFIP* For At least Three Months, Percent of Cases Open in Past Seven Quarters



*Note: All parents in case ineligible for both MFIP cash and MFIP food portion anywhere in Minnesota

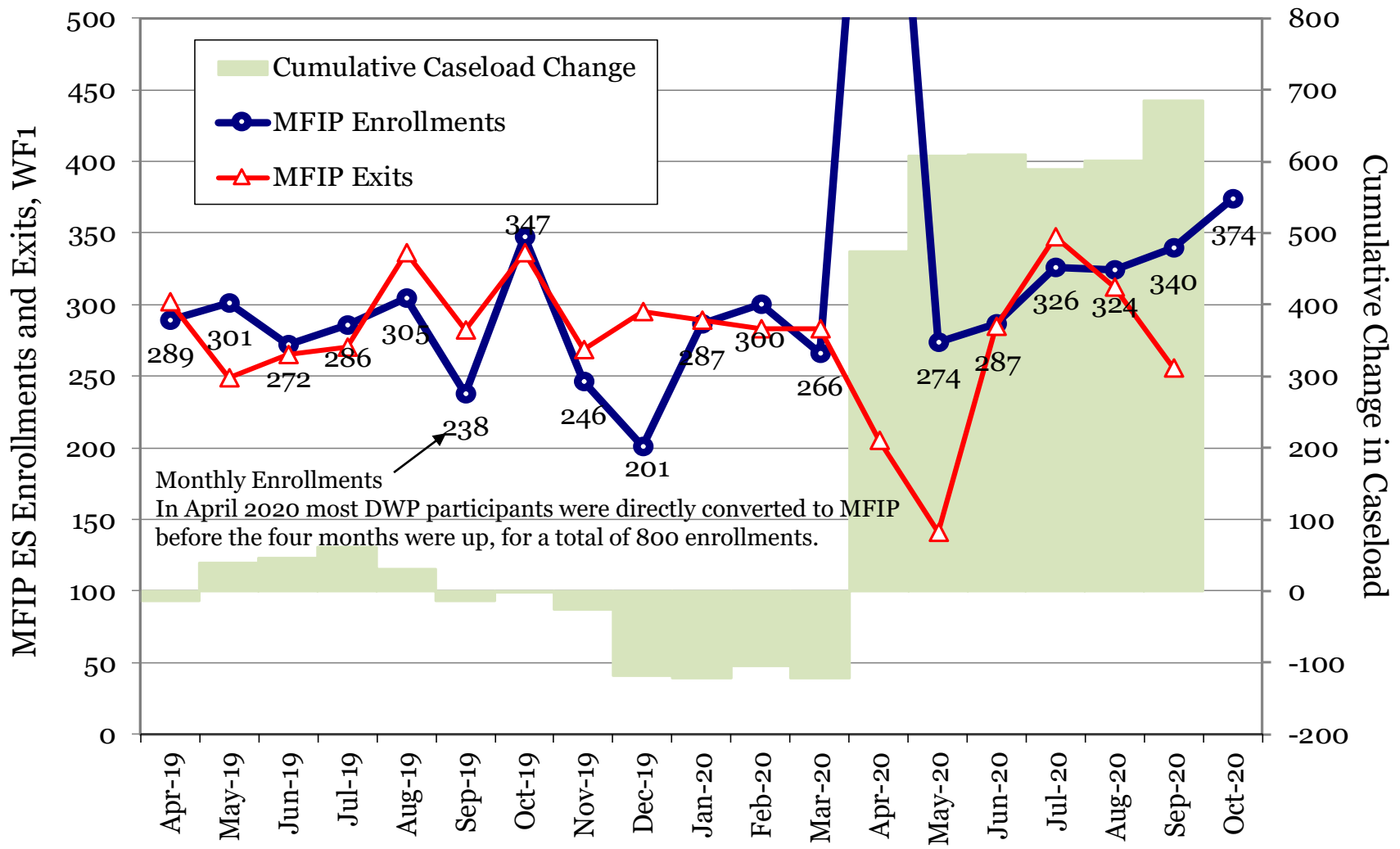
3. Family Stabilization Services, Percent of Total Parents on MFIP Apr-Jun 2020



Average FSS persons per month on MAXIS = 2,079

Average total persons per month on MAXIS = 4,311

4. MFIP Employment Services WF1 Enrollments and Exits, Prior 18 Months



Total MFIP-ES Enrollments = 5,690

Total MFIP-ES Exits = 5,005

Note: exits include transfers to other counties

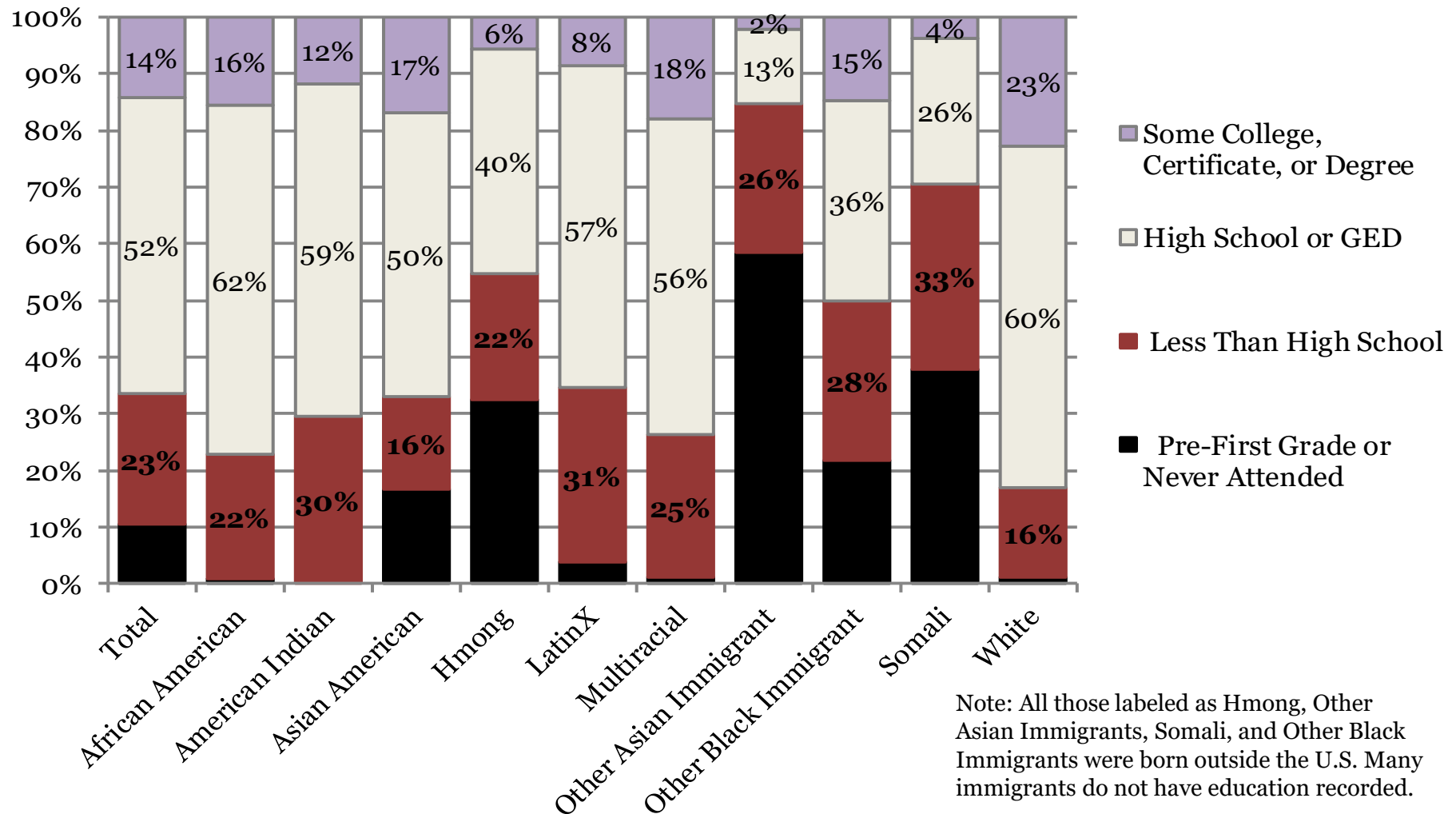
Net Change = 685

Open on WF1 at Start = 3,794

Open on WF1 at End = 4,479

5. Highest Educational Attainment from WF1 or MAXIS, MFIP Parents Apr-Jun 2020

MFIP Parents Open with ES Agency First of Month and Excludes Child under 1 Exemptions



Percent High School or Higher = 66.4% Percent 1st Grade/Never Attended = 10.5%

6. High School Completion and GED Hours

Average Percent of Participants per Month, April-June 2020

MFIP Parents Open with an ES Agency First of Month, Excludes Child under 1 Exemptions

	Average Participants Without HS Diploma by Monthly Hours					
		Percent of Total				
Agency on First of Month	Total Without GED or HS Diploma	0 Hours	1 to 42 Hours	43 to 86 Hours	87 or More	Any Hours
Assisted Services	972	99.1%	0.3%	0.3%	0.3%	0.9%
American Indian Family Center	29	100.0%	0.0%	0.0%	0.0%	0.0%
Avivo	123	100.0%	0.0%	0.0%	0.0%	0.0%
Goodwill-Easter Seals	66	100.0%	0.0%	0.0%	0.0%	0.0%
HIRED	119	99.4%	0.6%	0.0%	0.0%	0.6%
HAP	313	100.0%	0.0%	0.0%	0.0%	0.0%
Workforce Solutions-AST/Adult	126	99.2%	0.3%	0.0%	0.5%	0.8%
Workforce Solutions-Young Adult	164	95.9%	1.2%	1.4%	1.4%	4.1%
YWCA of St. Paul	33	98.0%	1.0%	1.0%	0.0%	2.0%
Ramsey County Public Health	28	29.4%	63.5%	7.1%	0.0%	70.6%
Extension (all agencies)	172	98.3%	1.5%	0.0%	0.2%	1.7%

7. Work Preparation Activities

**Average Percent of Participants by FWL, ESL, and ABE Hours Combined per Month,
April-June 2020 MFIP Parents Open with an ES Agency First of Month,
Excludes Child under 1 Exemptions**

Average Participants by Monthly Hours in FWL, ESL, or ABE						
			Percent of Total			
Agency on First of Month	Total Active	0 Hours	1 to 42 Hours	43 to 86 Hours	87 or More	Any Hours
Assisted Services	2,938	99.2%	0.7%	0.1%	0.0%	0.8%
American Indian Family Center	118	100.0%	0.0%	0.0%	0.0%	0.0%
Avivo	375	98.3%	1.6%	0.1%	0.0%	1.7%
Goodwill-Easter Seals	332	99.5%	0.5%	0.0%	0.0%	0.5%
HIRED	455	99.0%	0.7%	0.3%	0.0%	1.0%
HAP	416	98.3%	1.4%	0.2%	0.0%	1.7%
Workforce Solutions-AST/Adult	511	99.3%	0.5%	0.3%	0.0%	0.7%
Workforce Solutions-Young Adult	498	99.9%	0.1%	0.0%	0.0%	0.1%
YWCA of St. Paul	233	100.0%	0.0%	0.0%	0.0%	0.0%
Ramsey County Public Health	44	100.0%	0.0%	0.0%	0.0%	0.0%
Extension (all agencies)	716	100.0%	0.0%	0.0%	0.0%	0.0%

8. Training up to 12 Months and 13 or More Months

Average Percent of Total Participants by Training Hours Per Month, April-June 2020
MFIP Parents Open with an ES Agency First of Month, Excludes Child under 1 Exemptions

Average Participants by Monthly Hours in Training Activities						
			Percent of Total			
Agency on First of Month	Total Active	0 Hours	1 to 42 Hours	43 to 86 Hours	87 or More	Any Hours
Assisted Services	2,938	98.5%	0.4%	0.5%	0.6%	1.5%
American Indian Family Center	118	100.0%	0.0%	0.0%	0.0%	0.0%
Avivo	375	99.3%	0.2%	0.1%	0.4%	0.7%
Goodwill-Easter Seals	332	99.5%	0.0%	0.1%	0.4%	0.5%
HIRED	455	99.4%	0.3%	0.1%	0.1%	0.6%
HAP	416	100.0%	0.0%	0.0%	0.0%	0.0%
Workforce Solutions-AST/Adult	511	96.0%	1.0%	1.4%	1.7%	4.0%
Workforce Solutions-Young Adult	498	97.4%	0.5%	1.1%	1.0%	2.6%
YWCA of St. Paul	233	98.3%	1.0%	0.6%	0.1%	1.7%
Ramsey County Public Health	44	100.0%	0.0%	0.0%	0.0%	0.0%
Extension Services (any agency)	716	99.6%	0.2%	0.1%	0.0%	0.4%

9. All Education and Training Hours

Average Participants by Hours Per Month, April-June 2020

Total high school completion, GED, ESL, FWL, ABE, and training hours combined

MFIP Parents Open with an ES Agency First of Month, Excludes Child under 1 Exemptions

Average Participants by Monthly Hours in Any Education Activity						
Agency on First of Month	Total Active	0 Hours	Percent of Total			Any Hours
			1 to 42 Hours	43 to 86 Hours	87 or More	
Assisted Services	2,938	97.3%	1.2%	0.8%	0.7%	2.7%
American Indian Family Center	118	100.0%	0.0%	0.0%	0.0%	0.0%
Avivo	375	97.6%	1.8%	0.2%	0.4%	2.4%
Goodwill-Easter Seals	332	99.0%	0.5%	0.1%	0.4%	1.0%
HIRED	455	98.3%	1.1%	0.4%	0.1%	1.7%
HAP	416	98.3%	1.4%	0.2%	0.0%	1.7%
Workforce Solutions-AST/Adult	511	95.0%	1.5%	1.6%	1.8%	5.0%
Workforce Solutions-Young Adult	498	95.6%	1.1%	1.9%	1.5%	4.4%
YWCA of St. Paul	233	98.0%	1.1%	0.7%	0.1%	2.0%
Ramsey County Public Health	44	23.3%	68.4%	8.3%	0.0%	76.7%
Extension (all agencies)	716	99.1%	0.6%	0.1%	0.1%	0.9%

10. MFIP Cases Monthly Work Participation Rates, Past 12 Months

Excludes cases with 2-parents, off cash grant, with 1-3 sanctions, or on FSS

