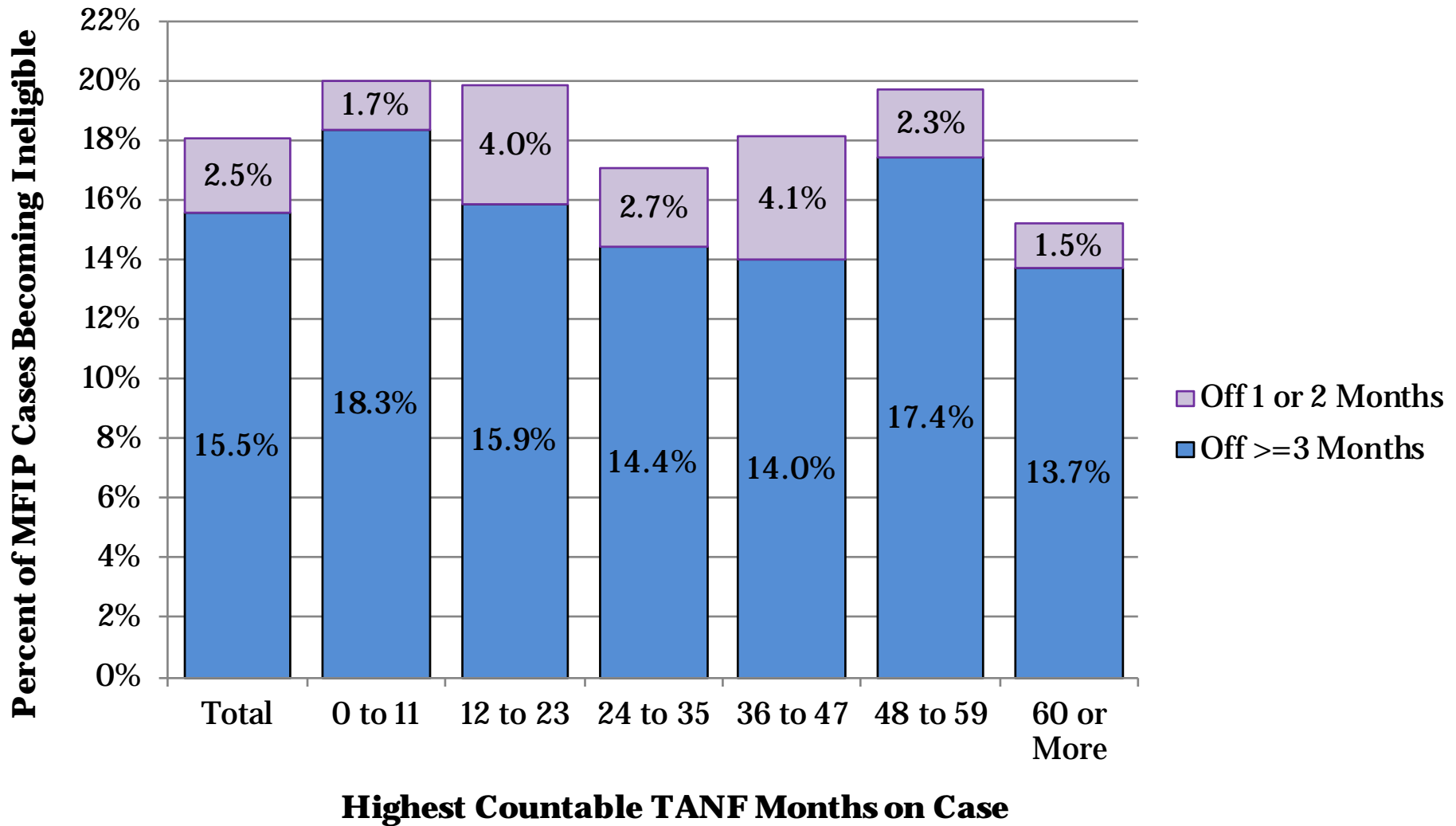


MFIP-Employment Services
County-Wide Indicators
January-March, 2019

Published July 10, 2019

Compiled by Health and Wellness Services Administration, Office of Research & Evaluation

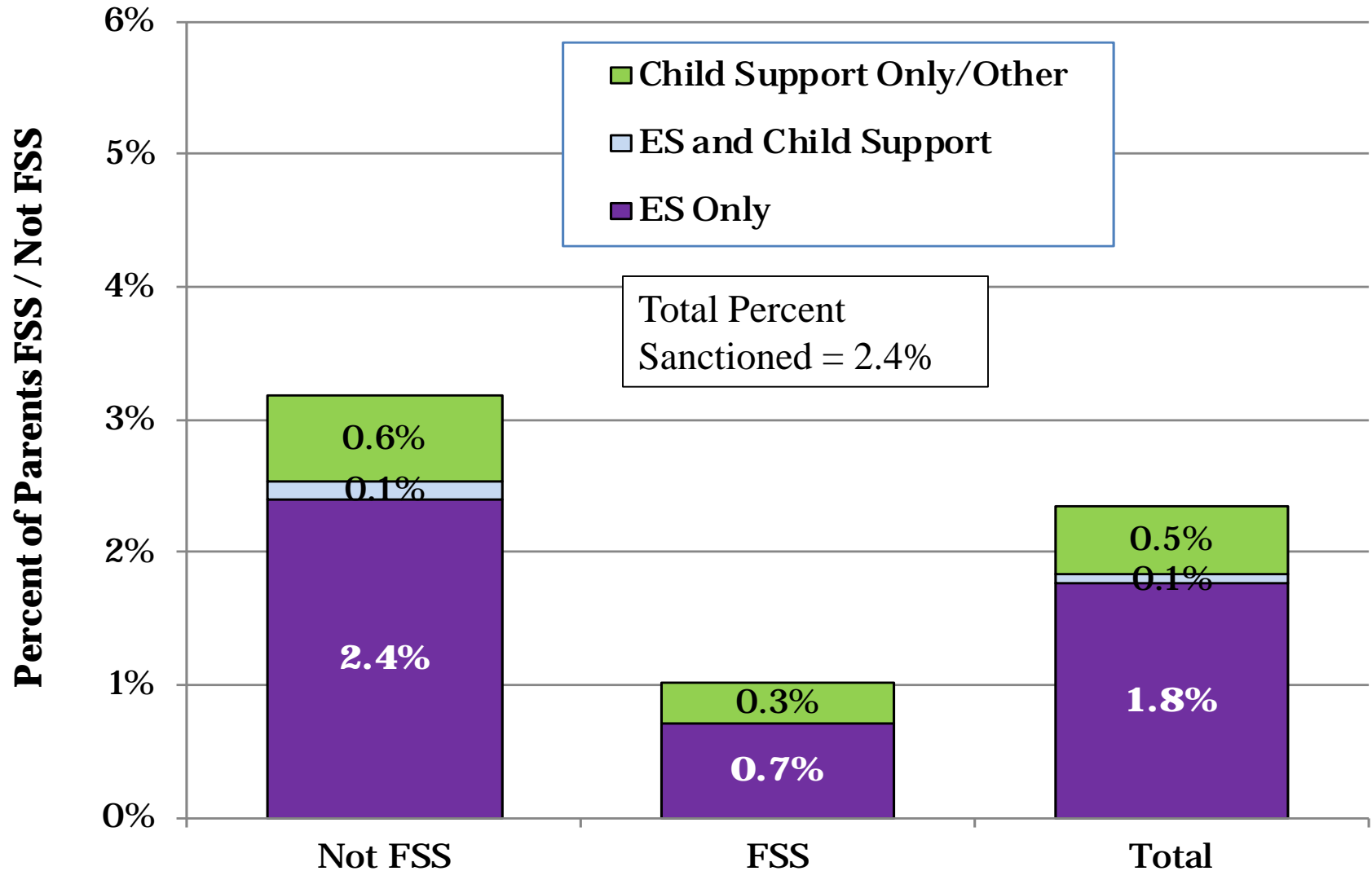
1. Cases Leaving MFIP* Over Jan-Mar 2019, Ineligible on MAXIS in Following Months



*Note: All parents ineligible for both MFIP cash and MFIP food portion anywhere in Minnesota

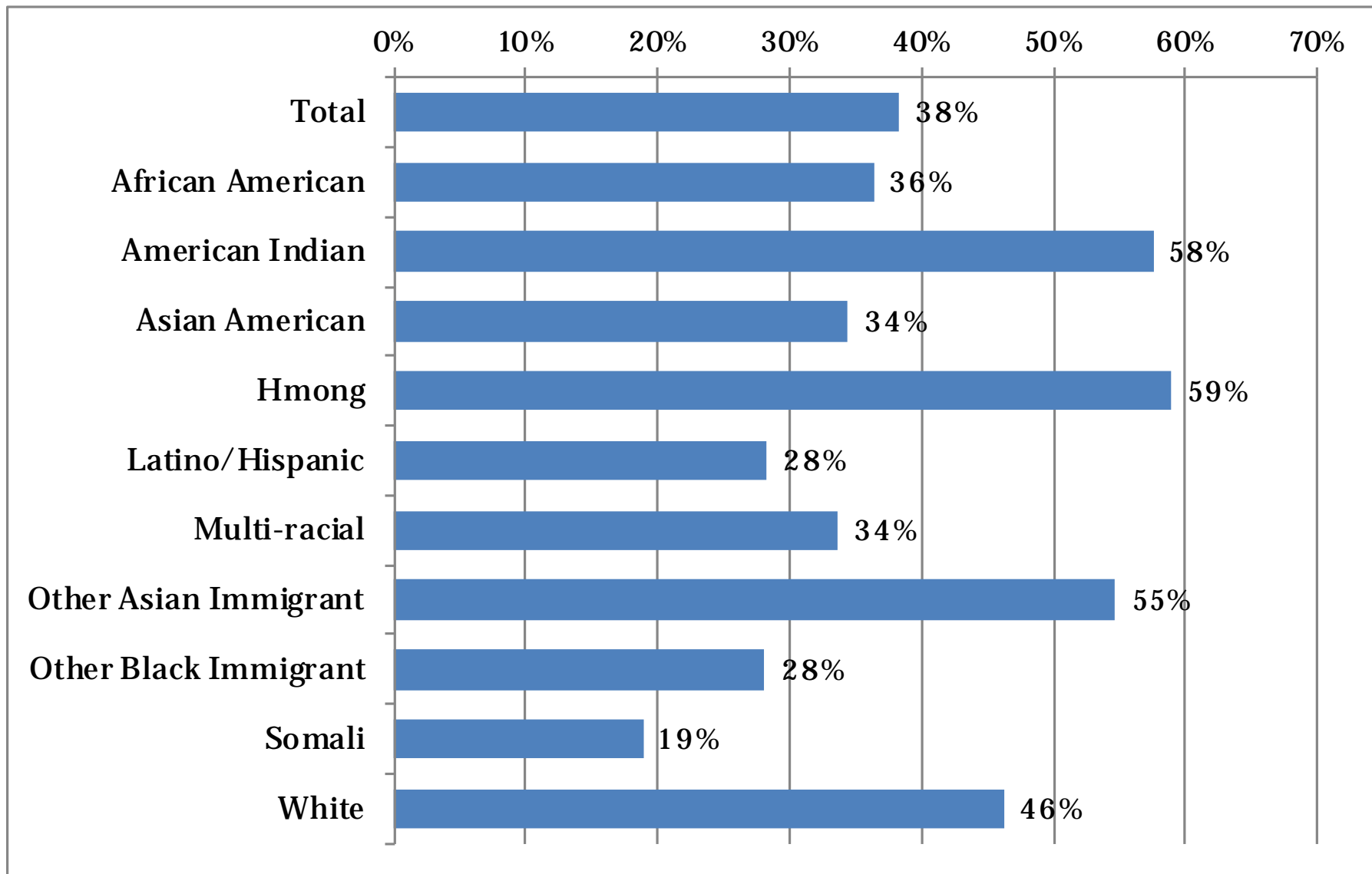
Total cases eligible in any month of quarter = 3,867

2. MFIP Parents, Sanction Rates Per Month Jan-Mar 2019



Average MFIP Parents Eligible per month on MAXIS:
 Not FSS = 2,327 FSS = 1,442

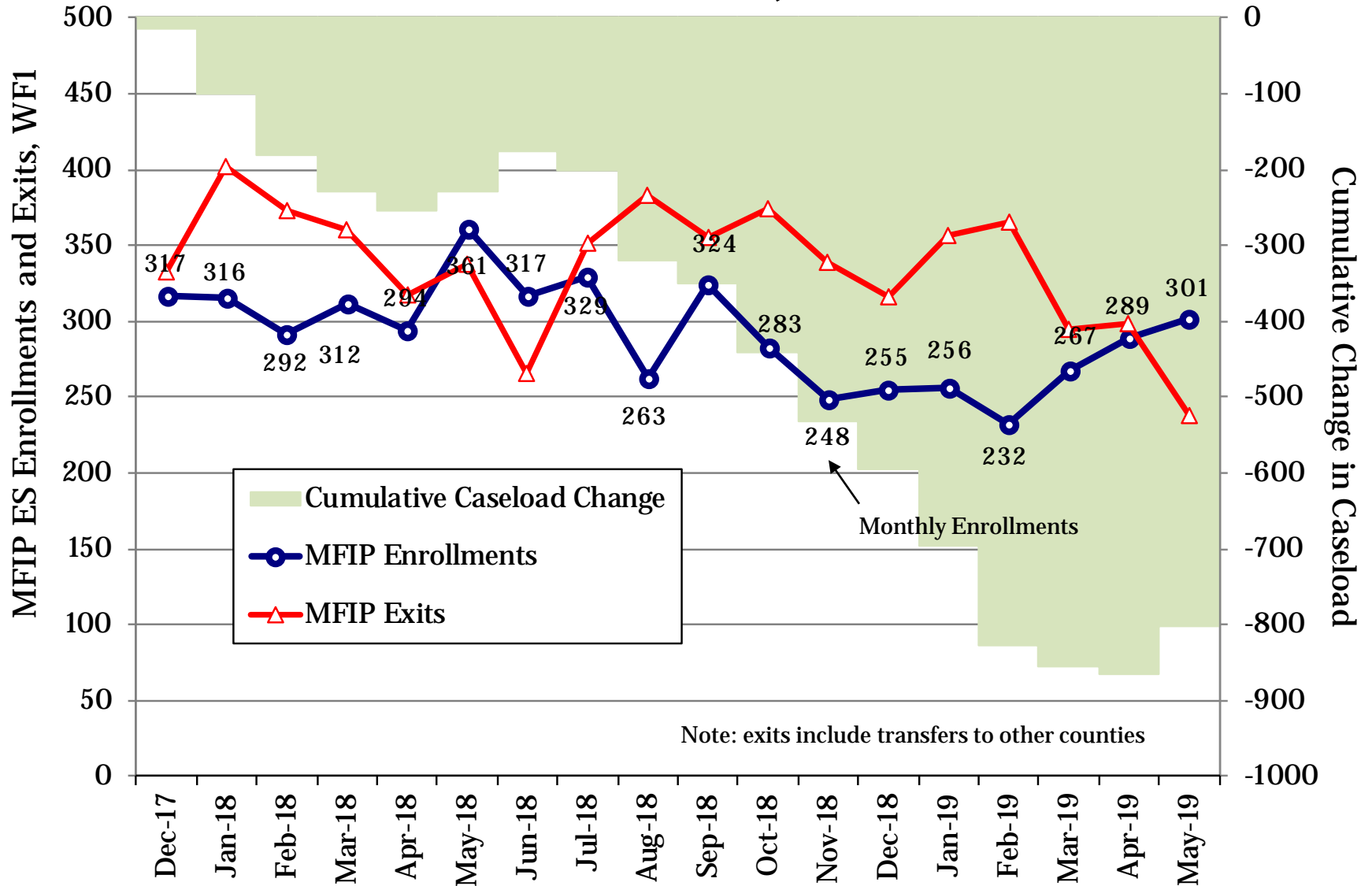
3. Family Stabilization Services, Percent of Total Parents on MFIP Jan-Mar 2019



Average FSS persons per month on MAXIS = 1,442

Average total persons per month on MAXIS = 3,768

4. MFIP Employment Services WF1 Enrollments and Exits, Prior 18 Months



Note: exits include transfers to other counties

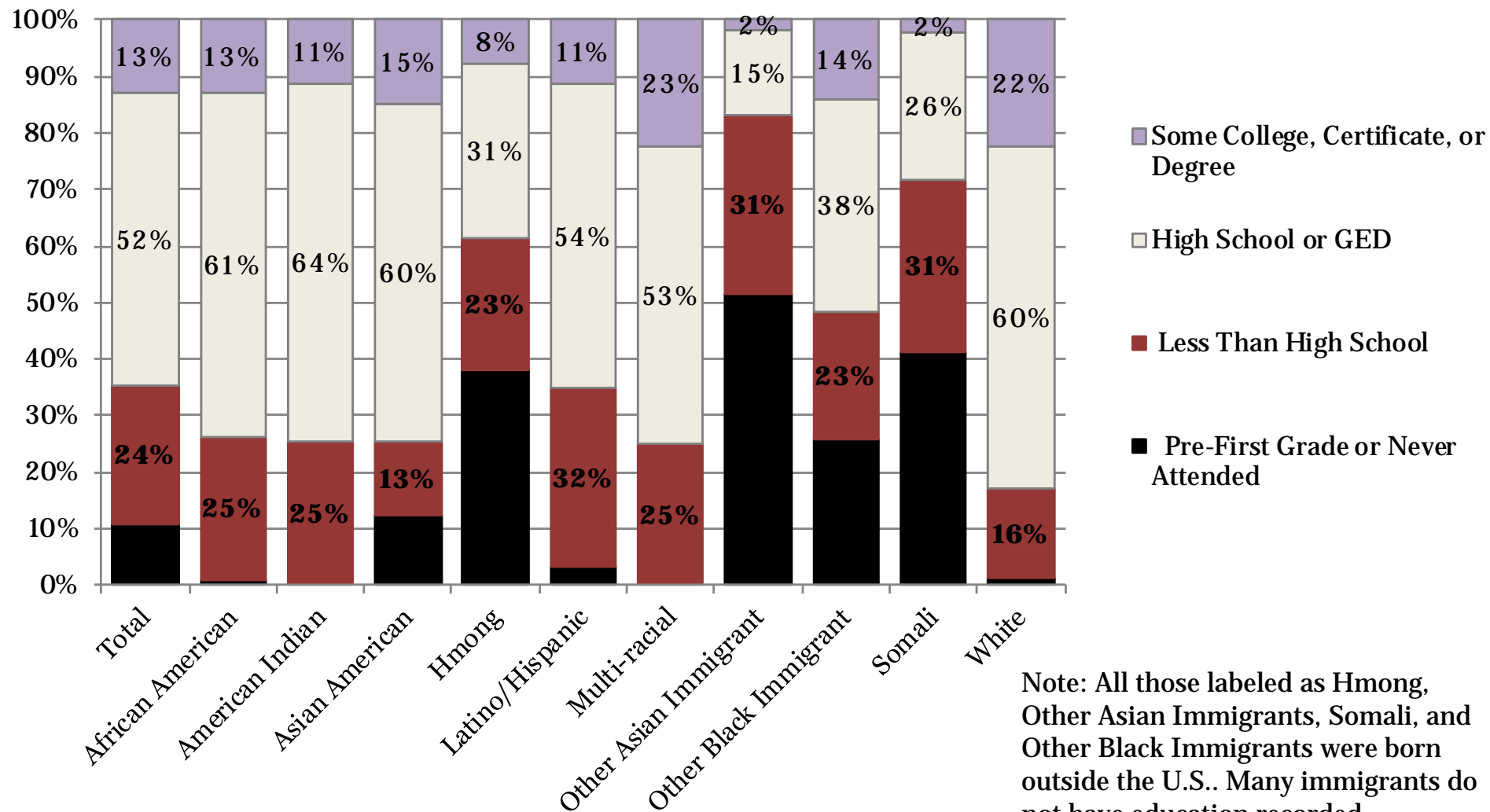
Total MFIP-ES Enrollments = 5,256
 Total MFIP-ES Exits = 6,058

Net Change = -807

Open on WF1 at Start = 4,657
 Open on WF1 at End = 3,850

5. Highest Educational Attainment from WF1 or MAXIS, MFIP Parents Jan-Mar 2019

MFIP Parents Open with ES Agency First of Month and Excludes Child under 1 Exemptions



Note: All those labeled as Hmong, Other Asian Immigrants, Somali, and Other Black Immigrants were born outside the U.S.. Many immigrants do not have education recorded.

Percent High School or Higher = 64.6% Percent 1st Grade/Never Attended = 10.8%

6. High School Completion and GED Hours

Average Percent of Participants per Month, January-March 2019

MFIP Parents Open with an ES Agency First of Month and Excludes Child under 1 Exemptions

Average Participants Without HS Diploma by Monthly Hours						
Agency on First of Month	Total Without GED or HS Diploma	Percent of Total				Any Hours
		0 Hours	1 to 42 Hours	43 to 86 Hours	87 or More	
Assisted Services	831	99.2%	0.6%	0.1%	0.2%	0.8%
American Indian Family Center	11	100.0%	0.0%	0.0%	0.0%	0.0%
Employment Action Center	120	100.0%	0.0%	0.0%	0.0%	0.0%
Goodwill-Easter Seals	78	97.4%	2.6%	0.0%	0.0%	2.6%
HIRED-Age 22 and Older	111	99.4%	0.3%	0.0%	0.3%	0.6%
HIRED-Young Parents Under 22	77	96.1%	2.6%	0.4%	0.9%	3.9%
Hmong American Partnership	270	100.0%	0.0%	0.0%	0.0%	0.0%
Workforce Solutions-AST	126	98.9%	0.3%	0.3%	0.5%	1.1%
YWCA	37	100.0%	0.0%	0.0%	0.0%	0.0%
Ramsey County Public Health	38	22.6%	28.7%	48.7%	0.0%	77.4%
Workforce Solutions-EXS	237	98.7%	1.1%	0.1%	0.0%	1.3%

7. Work Preparation Activities

**Average Percent of Participants by FWL, ESL, and ABE Hours per Month Combined,
January-March 2019 MFIP Parents Open with an ES Agency First of Month
and Excludes Child under 1 Exemptions**

		Average Participants by Monthly Hours				
			Percent of Total			
Agency on First of Month	Total Active	0 Hours	1 to 42 Hours	43 to 86 Hours	87 or More	Any Hours
Assisted Services	2,465	95.9%	2.7%	1.3%	0.1%	4.1%
American Indian Family Center	70	100.0%	0.0%	0.0%	0.0%	0.0%
Employment Action Center	369	94.4%	3.3%	2.0%	0.3%	5.6%
Goodwill-Easter Seals	354	96.1%	3.0%	0.8%	0.0%	3.9%
HIRED-Age 22 and Older	377	97.5%	1.8%	0.7%	0.0%	2.5%
HIRED-Young Parents Under 22	218	100.0%	0.0%	0.0%	0.0%	0.0%
Hmong American Partnership	351	86.6%	7.7%	5.3%	0.4%	13.4%
Workforce Solutions-AST	497	98.1%	1.6%	0.2%	0.1%	1.9%
YWCA	230	99.6%	0.4%	0.0%	0.0%	0.4%
Ramsey County Public Health	48	100.0%	0.0%	0.0%	0.0%	0.0%
Workforce Solutions-EXS	849	99.6%	0.4%	0.0%	0.0%	0.4%

8. Training up to 12 Months and 13 or More Months

Average Percent of Total Participants by Training Hours Per Month, January-March 2019
 MFIP Parents Open with an ES Agency First of Month and Excludes Child under 1 Exemptions

Average Participants by Monthly Hours in Training Activities						
Agency on First of Month	Total Active	Percent of Total				Any Hours
		0 Hours	1 to 42 Hours	43 to 86 Hours	87 or More	
Assisted Services	2,465	95.1%	0.8%	1.6%	2.6%	4.9%
American Indian Family Center	70	98.6%	1.4%	0.0%	0.0%	1.4%
Employment Action Center	369	93.3%	0.8%	1.4%	4.5%	6.7%
Goodwill-Easter Seals	354	92.8%	1.2%	3.6%	2.4%	7.2%
HIRED-Age 22 and Older	377	95.4%	0.6%	1.2%	2.8%	4.6%
HIRED-Young Parents Under 22	218	92.2%	1.5%	1.5%	4.7%	7.8%
Hmong American Partnership	351	99.4%	0.0%	0.5%	0.1%	0.6%
Workforce Solutions-AST	497	95.0%	0.6%	2.1%	2.3%	5.0%
YWCA	230	95.6%	0.9%	1.2%	2.3%	4.4%
Ramsey County Public Health	48	100.0%	0.0%	0.0%	0.0%	0.0%
Workforce Solutions-EXS	849	97.4%	0.7%	0.8%	1.1%	2.6%

9. All Education and Training Hours

Average Participants by Hours Per Month, January-March 2019

Total high school completion, GED, ESL, FWL, ABE, and training hours combined

MFIP Parents Open with an ES Agency First of Month and Excludes Child under 1 Exemptions

		Average Participants by Monthly Hours				
			Percent of Total			
Agency on First of Month	Total Active	0 Hours	1 to 42 Hours	43 to 86 Hours	87 or More	Any Hours
Assisted Services	2,465	90.6%	3.7%	3.0%	2.7%	9.4%
American Indian Family Center	70	98.6%	1.4%	0.0%	0.0%	1.4%
Employment Action Center	369	87.7%	4.2%	3.3%	4.8%	12.3%
Goodwill-Easter Seals	354	88.4%	4.8%	4.4%	2.4%	11.6%
HIRED-Age 22 and Older	377	92.7%	2.5%	1.9%	2.9%	7.3%
HIRED-Young Parents Under 22	218	90.5%	2.8%	1.7%	5.1%	9.5%
Hmong American Partnership	351	86.1%	7.6%	5.8%	0.5%	13.9%
Workforce Solutions-AST	497	92.7%	2.3%	2.5%	2.5%	7.3%
YWCA	230	95.2%	1.3%	1.2%	2.3%	4.8%
Ramsey County Public Health	48	22.2%	31.3%	46.5%	0.0%	77.8%
Workforce Solutions-EXS	849	96.5%	1.5%	1.0%	1.1%	3.5%

10. MFIP Cases Monthly Work Participation Rates, Past 12 Months

Excludes cases with 2-parents, off cash grant, with 1-3 sanctions, or on FSS

