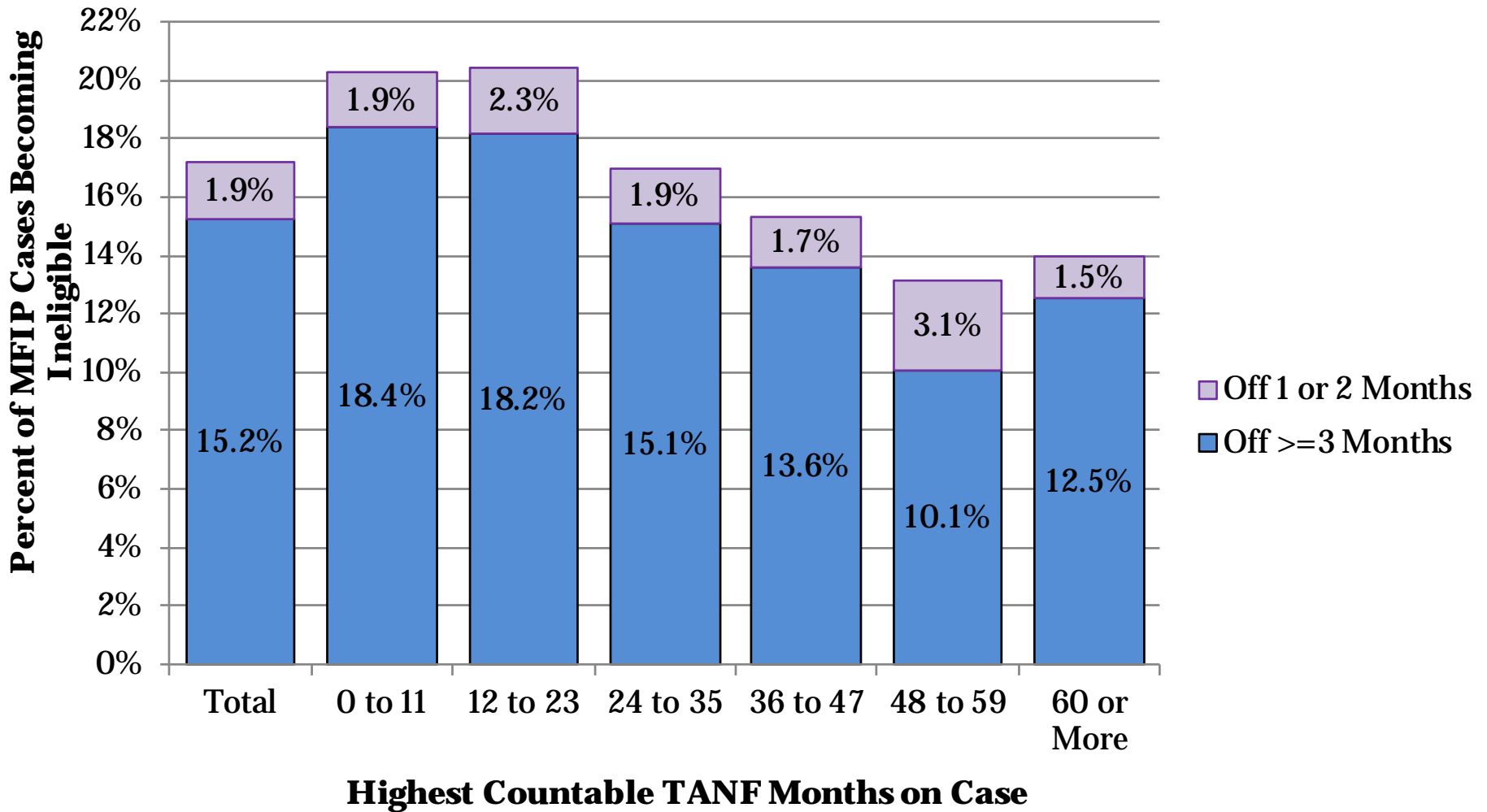


MFIP-Employment Services  
**County-Wide Indicators,**  
**July-September 2016**

Published February 15, 2017

Compiled by Health and Wellness Administration, Office of Research & Evaluation

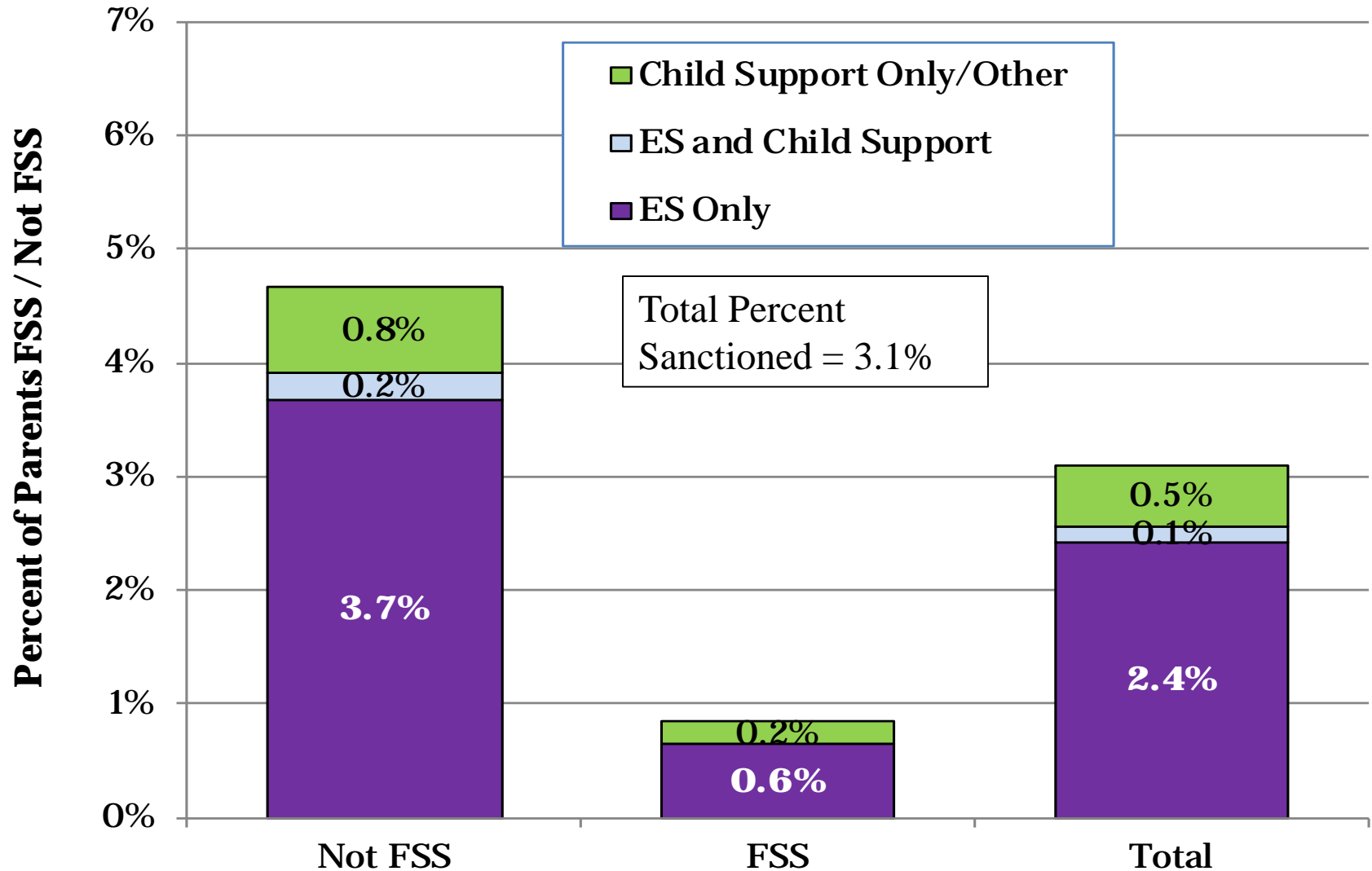
# 1. Cases Leaving MFIP\* Over Jul-Sep 2016, Ineligible on MAXIS in Following Months



\*Note: All parents ineligible for both MFIP cash and MFIP food portion anywhere in Minnesota

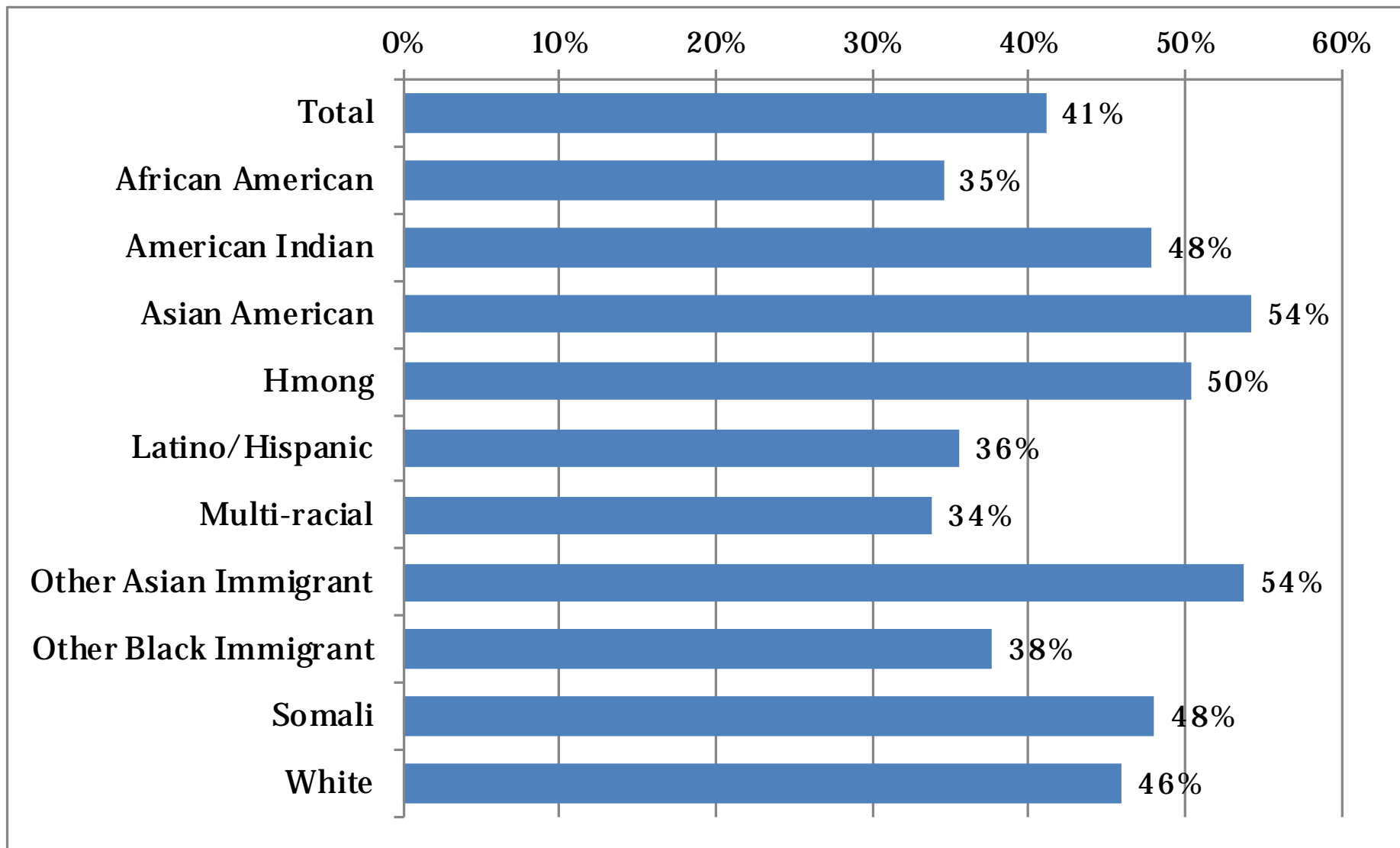
Total cases eligible in any month of quarter = 5,047

# 2. MFIP Parents, Sanction Rates Per Month Jul-Sep 2016



Average MFIP Parents Eligible per month on MAXIS:  
Not FSS = 2,972      FSS = 2,078

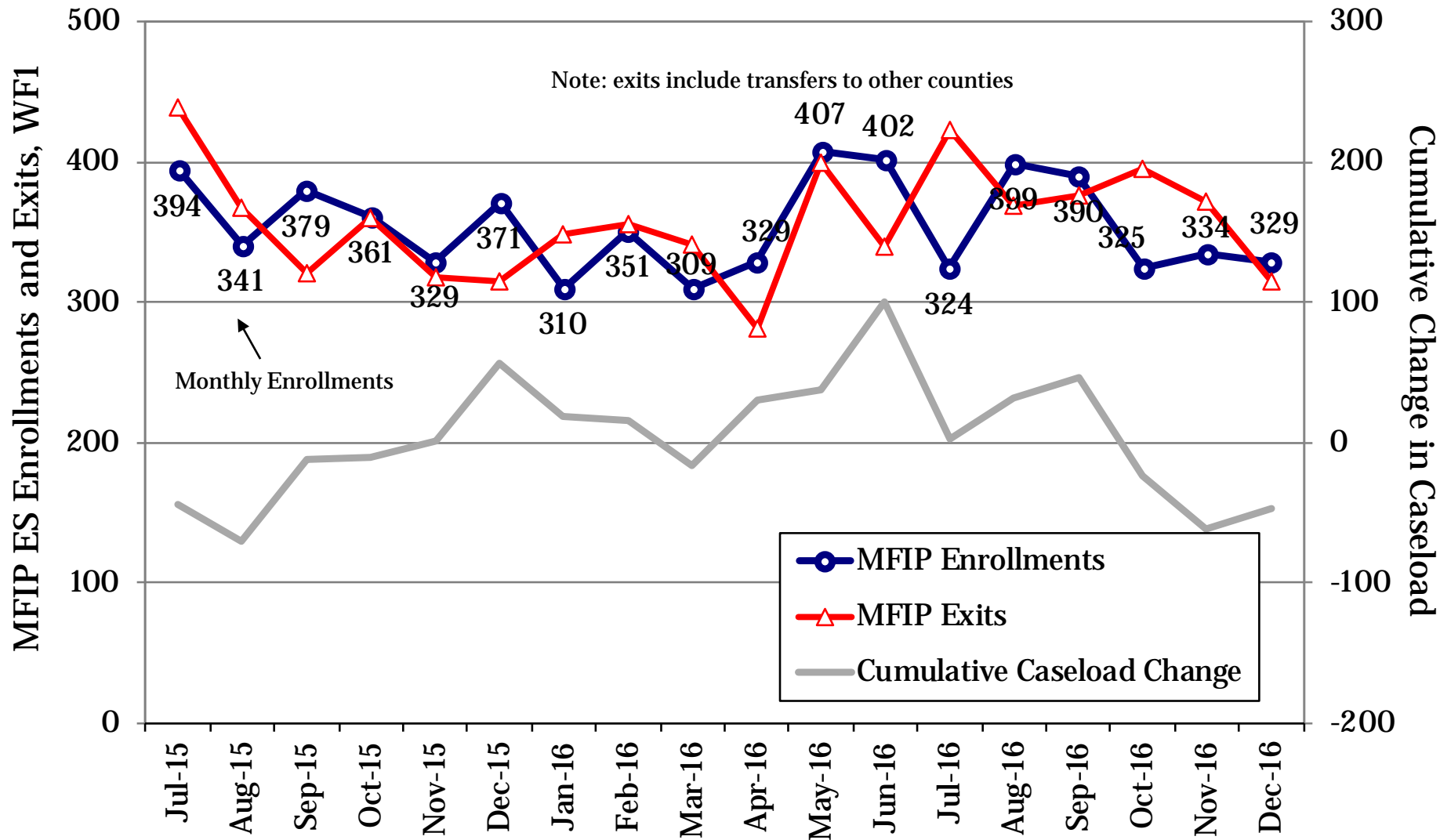
### 3. Family Stabilization Services, Percent of Total Parents on MFIP Jul-Sep 2016



Average FSS persons per month on MAXIS = 2,078

Average total persons per month on MAXIS = 5,050

# 4. MFIP Employment Services Enrollments and Exits, Prior 18 Months



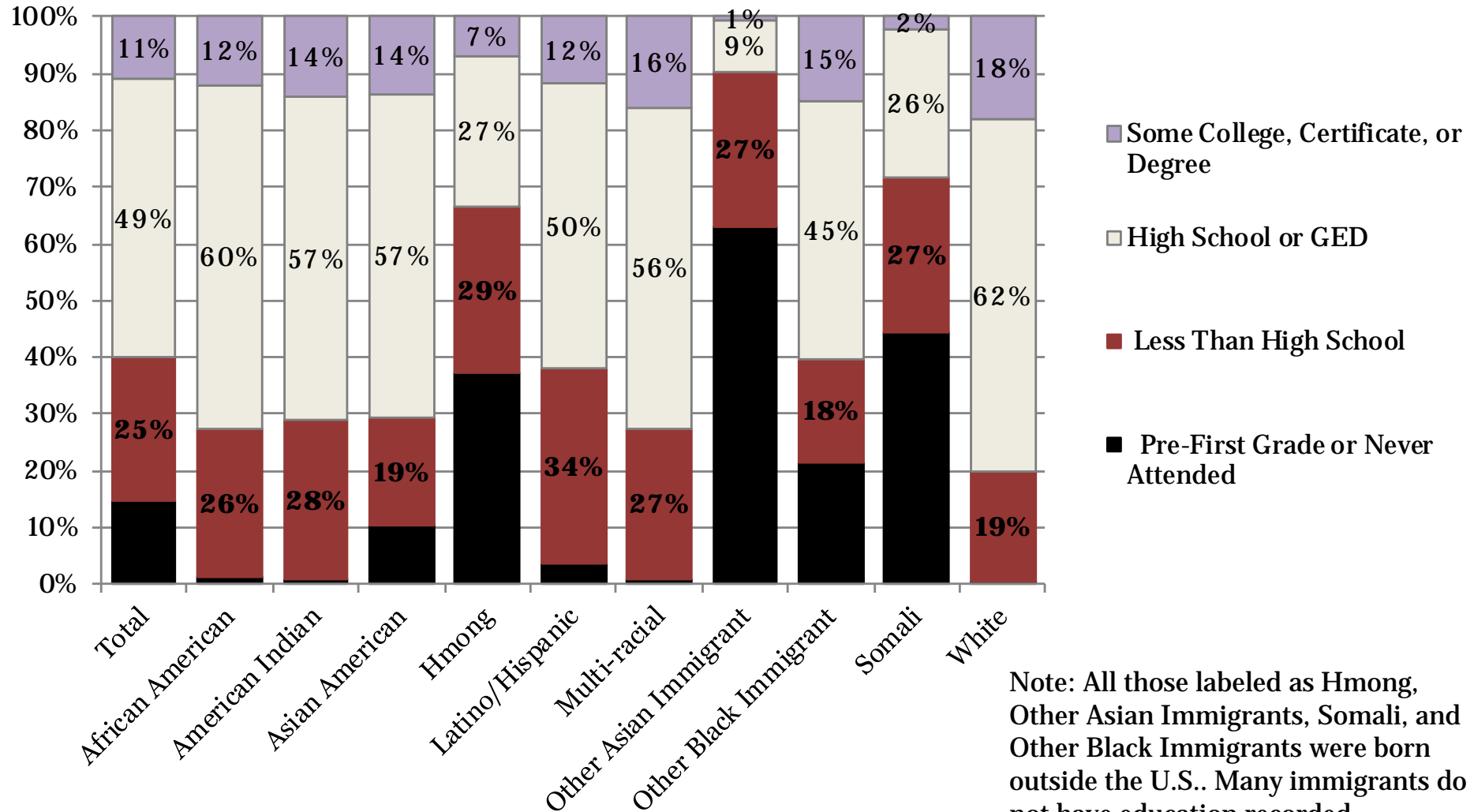
Total MFIP-ES Enrollments = 6,384  
 Total MFIP-ES Exits = 6,431

**Net Change = -146**

Open on WF1 at Start = 5,243  
 Open on WF1 at End = 5,197

# 5. Highest Educational Attainment from WF1 or MAXIS, MFIP Parents Jul-Sep 2016

MFIP Parents Open with ES Agency First of Month and Excludes Child under 1 Exemptions



Note: All those labeled as Hmong, Other Asian Immigrants, Somali, and Other Black Immigrants were born outside the U.S.. Many immigrants do not have education recorded.

Percent High School or Higher = 59.9%    Percent 1<sup>st</sup> Grade/Never Attended = 14.5%

# 6. High School Completion and GED Hours, Average per Month, Jul-Sep 2016

MFIP Parents Open with an ES Agency First of Month and Excludes Child under 1 Exemptions

Average Participants Without HS Diploma by Monthly Hours

Agency on First of Month	Total Active	Percent of Total				Any Hours
		0 Hours	1 to 42 Hours	43 to 86 Hours	87 or More	
<b>Assisted Services</b>	<b>1,223</b>	<b>98.7%</b>	<b>0.8%</b>	<b>0.4%</b>	<b>0.2%</b>	<b>1.3%</b>
American Indian Family Center	29	97.7%	2.3%	0.0%	0.0%	2.3%
Employment Action Center	163	98.8%	0.6%	0.4%	0.2%	1.2%
Goodwill-Easter Seals	125	97.3%	1.9%	0.5%	0.3%	2.7%
HIRED-Age 22 and Older	113	98.8%	1.2%	0.0%	0.0%	1.2%
HIRED-Young Parents Under 22	112	96.1%	1.8%	1.5%	0.6%	3.9%
Hmong American Partnership	467	99.7%	0.0%	0.1%	0.1%	0.3%
Workforce Solutions-AST	178	98.3%	0.9%	0.6%	0.2%	1.7%
YWCA	38	99.1%	0.9%	0.0%	0.0%	0.9%
Ramsey County Public Health	50	24.2%	37.6%	37.6%	0.7%	75.8%
Workforce Solutions-EXS	304	98.8%	1.0%	0.2%	0.0%	1.2%

# 7. Work Preparation Activities, Jul-16 to Sep-16, Average FWL, ESL, and ABE Hours per Month

MFIP Parents Open with an ES Agency First of Month and Excludes Child under 1 Exemptions

**Average Participants by Monthly Hours**

Agency on First of Month	Total Active	Percent of Total				Any Hours
		0 Hours	1 to 42 Hours	43 to 86 Hours	87 or More	
<b>Assisted Services</b>	<b>3,153</b>	<b>92.7%</b>	<b>3.7%</b>	<b>3.4%</b>	<b>0.1%</b>	<b>7.3%</b>
American Indian Family Center	111	100.0%	0.0%	0.0%	0.0%	0.0%
Employment Action Center	506	94.3%	4.5%	1.3%	0.0%	5.7%
Goodwill-Easter Seals	416	96.5%	1.8%	1.6%	0.1%	3.5%
HIRED-Age 22 and Older	395	96.8%	1.9%	1.4%	0.0%	3.2%
HIRED-Young Parents Under 22	276	99.3%	0.5%	0.2%	0.0%	0.7%
Hmong American Partnership	576	72.6%	12.2%	14.5%	0.7%	27.4%
Workforce Solutions-AST	638	98.0%	1.2%	0.7%	0.1%	2.0%
YWCA	236	99.9%	0.1%	0.0%	0.0%	0.1%
Ramsey County Public Health	56	100.0%	0.0%	0.0%	0.0%	0.0%
Workforce Solutions-EXS	942	99.5%	0.5%	0.1%	0.0%	0.5%



# 8. Training up to 12 Months and 13 or More Months

## Average Hours Per Month, Jul-16 to Sep-16

MFIP Parents Open with an ES Agency First of Month and Excludes Child under 1 Exemptions

Average Participants by Monthly Hours

Agency on First of Month	Total Active	Percent of Total				Any Hours
		0 Hours	1 to 42 Hours	43 to 86 Hours	87 or More	
<b>Assisted Services</b>	<b>3,153</b>	<b>96.2%</b>	<b>0.9%</b>	<b>1.2%</b>	<b>1.7%</b>	<b>3.8%</b>
American Indian Family Center	111	98.8%	1.2%	0.0%	0.0%	1.2%
Employment Action Center	506	95.6%	0.5%	1.6%	2.2%	4.4%
Goodwill-Easter Seals	416	96.3%	0.8%	1.4%	1.4%	3.7%
HIRED-Age 22 and Older	395	95.6%	1.3%	1.1%	2.0%	4.4%
HIRED-Young Parents Under 22	276	94.0%	1.2%	2.2%	2.7%	6.0%
Hmong American Partnership	576	99.7%	0.1%	0.1%	0.1%	0.3%
Workforce Solutions-AST	638	95.3%	1.3%	1.3%	2.1%	4.7%
YWCA	236	92.8%	1.8%	2.7%	2.7%	7.2%
Ramsey County Public Health	56	100.0%	0.0%	0.0%	0.0%	0.0%
Workforce Solutions-EXS	942	97.9%	0.7%	0.7%	0.6%	2.1%

# 9. All Education and Training Hours, Average Per Month, Jul-16 to Sep-16

**MFIP Parents Open with an ES Agency First of Month and Excludes Child under 1 Exemptions  
Total high school completion, GED, ESL, FWL, ABE, and training hours combined**

## Average Participants by Monthly Hours

Agency on First of Month	Total Active	Percent of Total				Any Hours
		0 Hours	1 to 42 Hours	43 to 86 Hours	87 or More	
<b>Assisted Services</b>	<b>3,153</b>	<b>88.2%</b>	<b>5.0%</b>	<b>4.8%</b>	<b>1.9%</b>	<b>11.8%</b>
American Indian Family Center	111	98.2%	1.8%	0.0%	0.0%	1.8%
Employment Action Center	506	89.4%	5.3%	3.0%	2.3%	10.6%
Goodwill-Easter Seals	416	92.0%	3.2%	3.2%	1.6%	8.0%
HIRED-Age 22 and Older	395	92.1%	3.5%	2.4%	2.0%	7.9%
HIRED-Young Parents Under 22	276	91.3%	2.8%	3.0%	2.9%	8.7%
Hmong American Partnership	576	72.2%	12.2%	14.6%	1.0%	27.8%
Workforce Solutions-AST	638	92.5%	2.8%	2.4%	2.3%	7.5%
YWCA	236	92.0%	2.5%	2.7%	2.8%	8.0%
Ramsey County Public Health	56	24.9%	39.1%	35.5%	0.6%	75.1%
Workforce Solutions-EXS	942	97.0%	1.5%	0.9%	0.6%	3.0%

# 10. MFIP Cases Monthly Work Participation Rates, Past 15 Months

Excludes cases with 2-parents, off cash grant, with 1-3 sanctions, or on FSS

