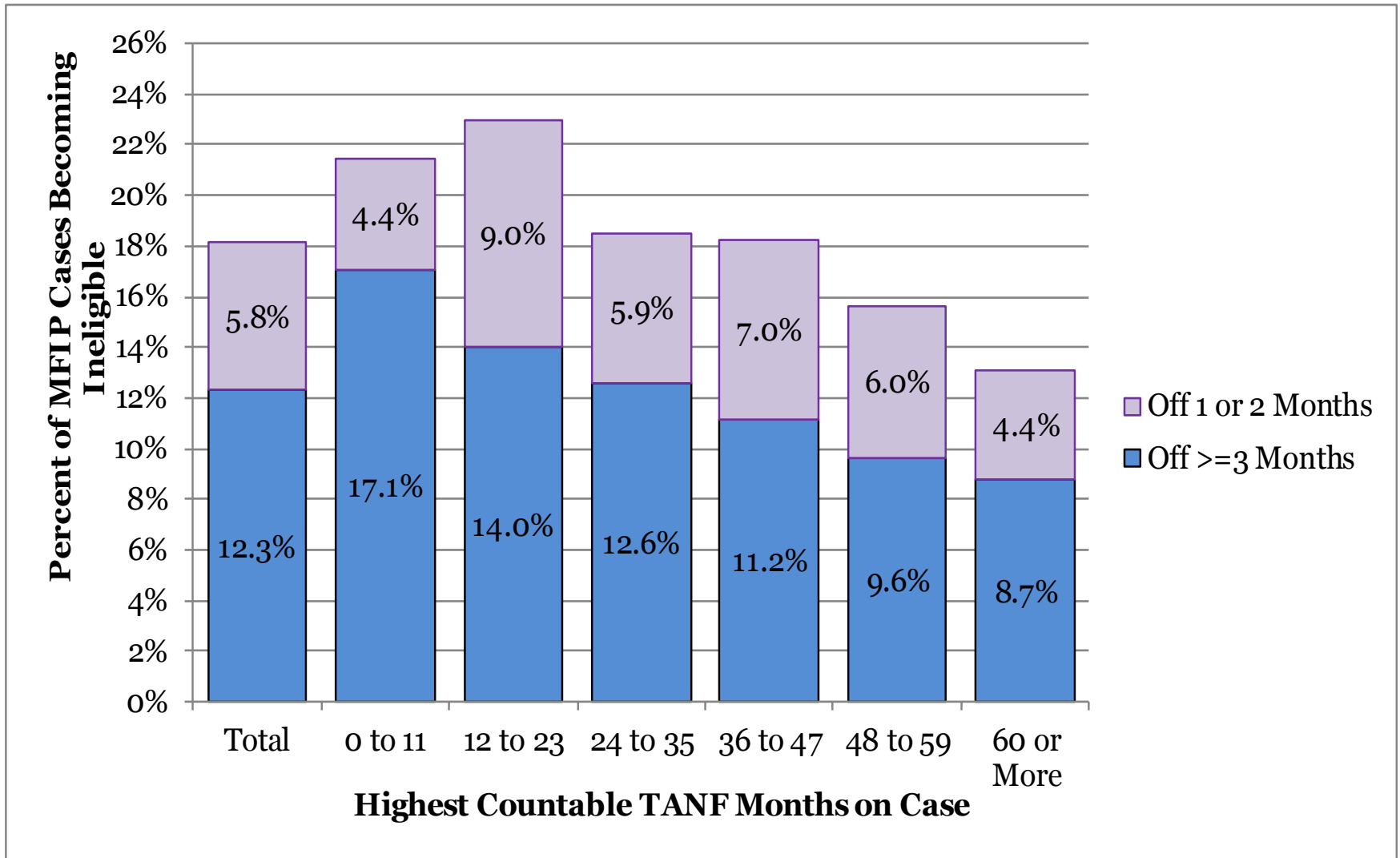


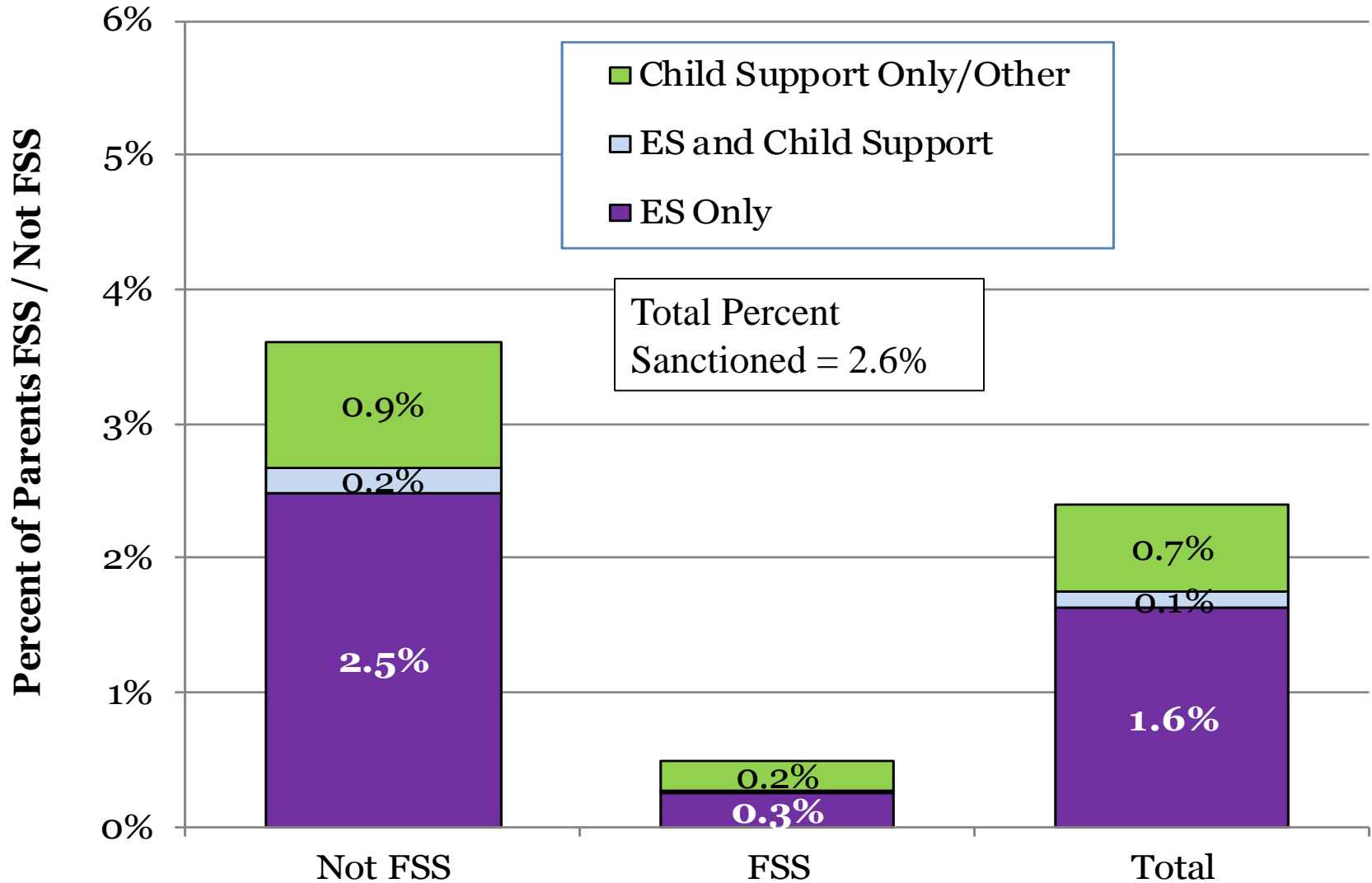
1. Cases Leaving MFIP* Over Jul-Sep 2019, Ineligible on MAXIS in Following Months



*Note: All parents ineligible for both MFIP cash and MFIP food portion anywhere in Minnesota

Total cases eligible in any month of quarter = 3,878

2. MFIP Parents, Sanction Rates Per Month Jul-Sep 2019

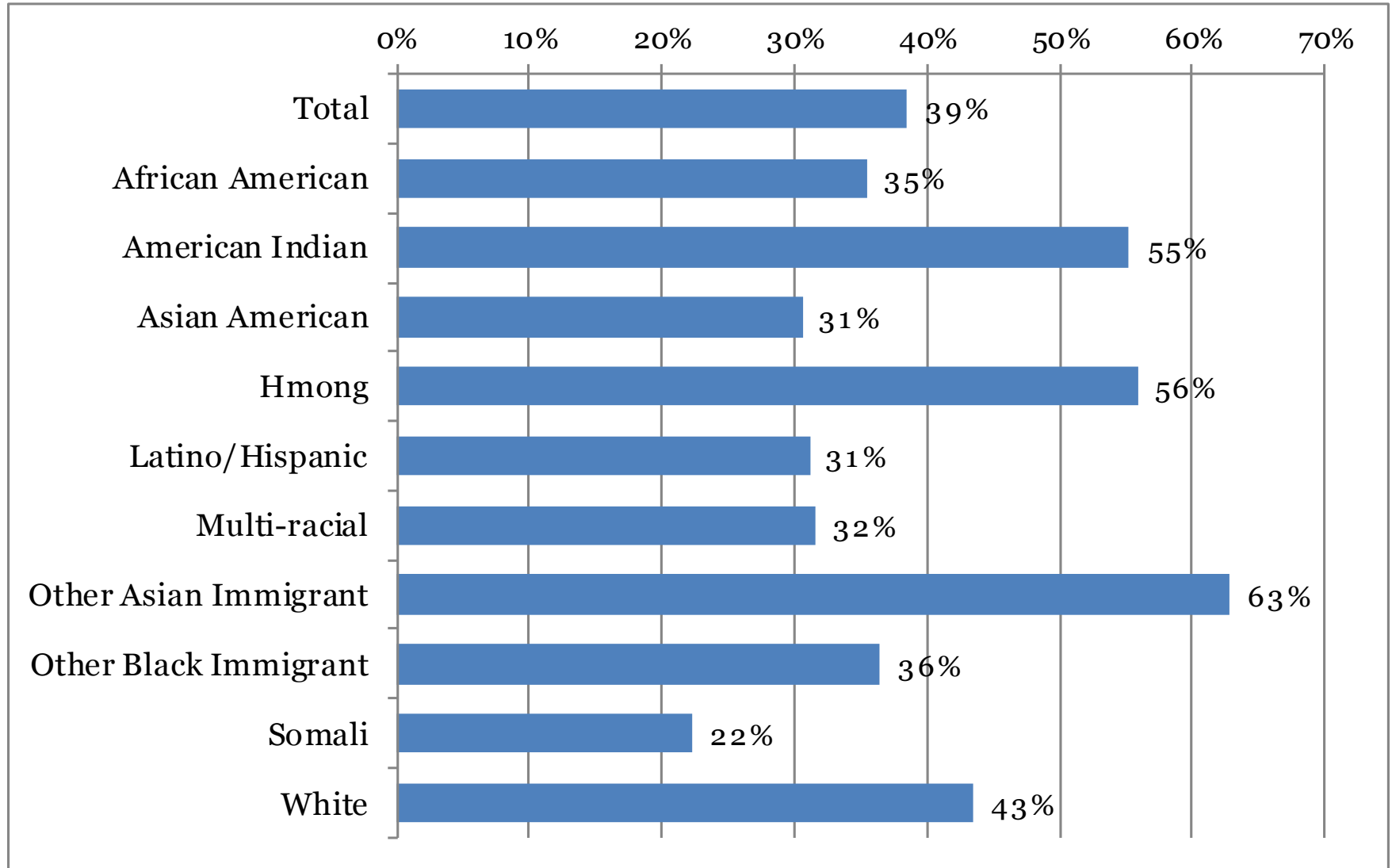


Average MFIP Parents Eligible per month on MAXIS:

Not FSS = 2,307

FSS = 1,446

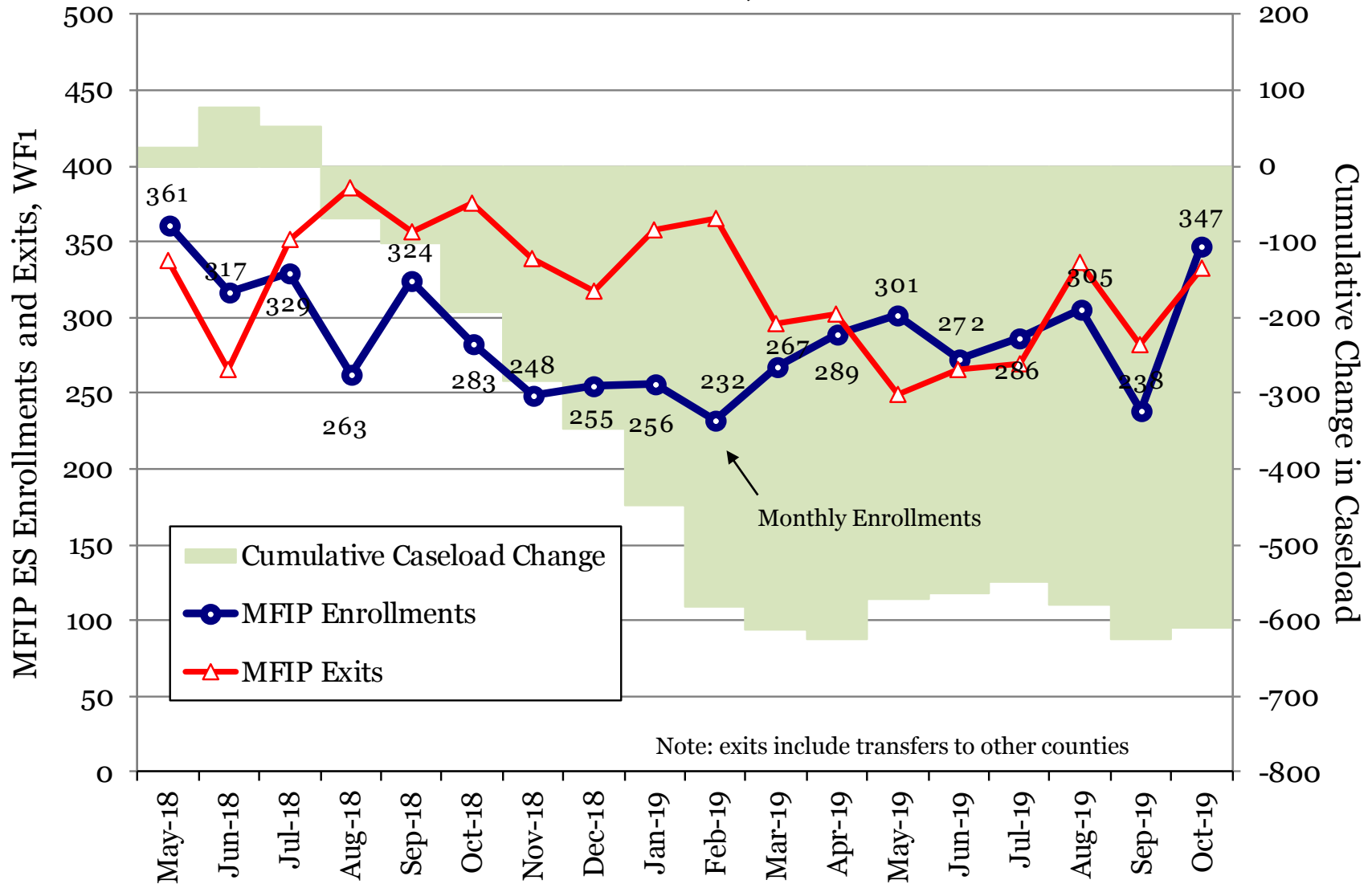
3. Family Stabilization Services, Percent of Total Parents on MFIP Jul-Sep 2019



Average FSS persons per month on MAXIS = 1,446

Average total persons per month on MAXIS = 3,753

4. MFIP Employment Services WF1 Enrollments and Exits, Prior 18 Months



Total MFIP-ES Enrollments = 5,173
 Total MFIP-ES Exits = 5,783

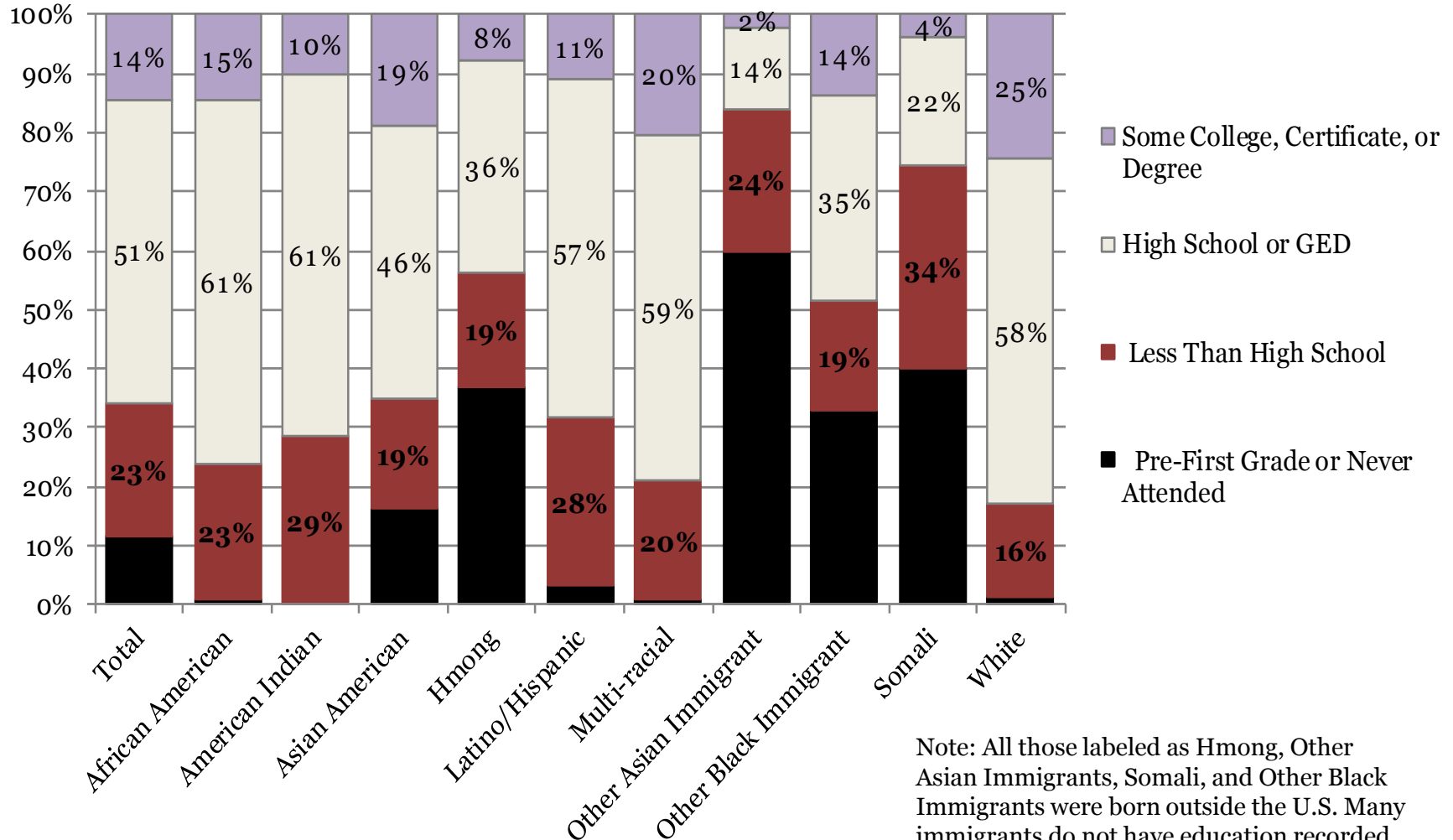
Net Change = -608

Open on WF1 at Start = 4,403
 Open on WF1 at End = 3,795

Note: exits include transfers to other counties

5. Highest Educational Attainment from WF1 or MAXIS, MFIP Parents Jul-Sep 2019

MFIP Parents Open with ES Agency First of Month and Excludes Child under 1 Exemptions



Note: All those labeled as Hmong, Other Asian Immigrants, Somali, and Other Black Immigrants were born outside the U.S. Many immigrants do not have education recorded.

Percent High School or Higher = 65.6% Percent 1st Grade/Never Attended = 11.5%

6. High School Completion and GED Hours

Average Percent of Participants per Month, July-September 2019

MFIP Parents Open with an ES Agency First of Month, Excludes Child under 1 Exemptions

Average Participants Without HS Diploma by Monthly Hours						
Agency on First of Month	Total Without GED or HS Diploma	Percent of Total				
		0 Hours	1 to 42 Hours	43 to 86 Hours	87 or More	Any Hours
Assisted Services	788	99.2%	0.6%	0.0%	0.2%	0.8%
American Indian Family Center	16	98.0%	0.0%	2.0%	0.0%	2.0%
Employment Action Center	121	99.5%	0.0%	0.0%	0.5%	0.5%
Goodwill-Easter Seals	69	96.6%	3.4%	0.0%	0.0%	3.4%
HIRED-Age 22 and Older	111	99.7%	0.3%	0.0%	0.0%	0.3%
HIRED-Young Parents Under 22	65	99.5%	0.5%	0.0%	0.0%	0.5%
Hmong American Partnership	252	99.9%	0.1%	0.0%	0.0%	0.1%
Workforce Solutions-AST	118	98.9%	0.6%	0.0%	0.6%	1.1%
YWCA	35	97.2%	2.8%	0.0%	0.0%	2.8%
Ramsey County Public Health	30	25.8%	49.4%	22.5%	2.2%	74.2%
Workforce Solutions-EXS	226	98.5%	1.5%	0.0%	0.0%	1.5%

7. Work Preparation Activities

Average Percent of Participants by FWL, ESL, and ABE Hours per Month Combined,
 July-September 2019 MFIP Parents Open with an ES Agency First of Month,
 Excludes Child under 1 Exemptions

Average Participants by Monthly Hours in FWL, ESL, or ABE						
Agency on First of Month	Total Active	Percent of Total				
		0 Hours	1 to 42 Hours	43 to 86 Hours	87 or More	Any Hours
Assisted Services	2,413	98.0%	1.1%	0.7%	0.1%	2.0%
American Indian Family Center	78	100.0%	0.0%	0.0%	0.0%	0.0%
Employment Action Center	366	96.8%	2.1%	0.9%	0.2%	3.2%
Goodwill-Easter Seals	338	98.1%	1.2%	0.5%	0.2%	1.9%
HIRED-Age 22 and Older	389	98.6%	0.9%	0.5%	0.0%	1.4%
HIRED-Young Parents Under 22	195	100.0%	0.0%	0.0%	0.0%	0.0%
Hmong American Partnership	322	94.0%	2.7%	3.2%	0.1%	6.0%
Workforce Solutions-AST	471	99.0%	0.8%	0.1%	0.0%	1.0%
YWCA	253	99.9%	0.0%	0.0%	0.1%	0.1%
Ramsey County Public Health	35	100.0%	0.0%	0.0%	0.0%	0.0%
Workforce Solutions-EXS	837	99.8%	0.2%	0.0%	0.0%	0.2%

8. Training up to 12 Months and 13 or More Months

Average Percent of Total Participants by Training Hours Per Month, July-September 2019
MFIP Parents Open with an ES Agency First of Month, Excludes Child under 1 Exemptions

Average Participants by Monthly Hours in Training Activities						
Agency on First of Month	Total Active	Percent of Total				
		0 Hours	1 to 42 Hours	43 to 86 Hours	87 or More	Any Hours
Assisted Services	2,413	96.6%	1.4%	0.9%	1.1%	3.4%
American Indian Family Center	78	96.2%	3.0%	0.9%	0.0%	3.8%
Employment Action Center	366	96.7%	1.2%	0.5%	1.5%	3.3%
Goodwill-Easter Seals	338	95.6%	2.1%	1.6%	0.8%	4.4%
HIRED-Age 22 and Older	389	96.7%	1.3%	0.8%	1.3%	3.3%
HIRED-Young Parents Under 22	195	95.9%	2.0%	1.4%	0.7%	4.1%
Hmong American Partnership	322	99.8%	0.0%	0.2%	0.0%	0.2%
Workforce Solutions-AST	471	95.7%	1.8%	0.8%	1.7%	4.3%
YWCA	253	96.1%	1.4%	1.1%	1.4%	3.9%
Ramsey County Public Health	35	100.0%	0.0%	0.0%	0.0%	0.0%
Workforce Solutions-EXS	837	98.3%	0.6%	0.6%	0.6%	1.7%

9. All Education and Training Hours

Average Participants by Hours Per Month, July-September 2019

Total high school completion, GED, ESL, FWL, ABE, and training hours combined

MFIP Parents Open with an ES Agency First of Month, Excludes Child under 1 Exemptions

Average Participants by Monthly Hours in Any Education Activity						
Agency on First of Month	Total Active	0 Hours	Percent of Total			Any Hours
			1 to 42 Hours	43 to 86 Hours	87 or More	
Assisted Services	2,413	94.3%	2.8%	1.6%	1.3%	5.7%
American Indian Family Center	78	95.7%	3.0%	1.3%	0.0%	4.3%
Employment Action Center	366	93.2%	3.3%	1.5%	2.1%	6.8%
Goodwill-Easter Seals	338	93.4%	3.6%	1.8%	1.2%	6.6%
HIRED-Age 22 and Older	389	95.2%	2.2%	1.3%	1.3%	4.8%
HIRED-Young Parents Under 22	195	95.7%	2.2%	1.4%	0.7%	4.3%
Hmong American Partnership	322	93.7%	2.8%	3.4%	0.1%	6.3%
Workforce Solutions-AST	471	93.9%	3.3%	1.0%	1.8%	6.1%
YWCA	253	95.4%	1.8%	1.1%	1.7%	4.6%
Ramsey County Public Health	35	26.4%	51.9%	19.8%	1.9%	73.6%
Workforce Solutions-EXS	837	97.4%	1.4%	0.6%	0.6%	2.6%

10. MFIP Cases Monthly Work Participation Rates, Past 12 Months

Excludes cases with 2-parents, off cash grant, with 1-3 sanctions, or on FSS

