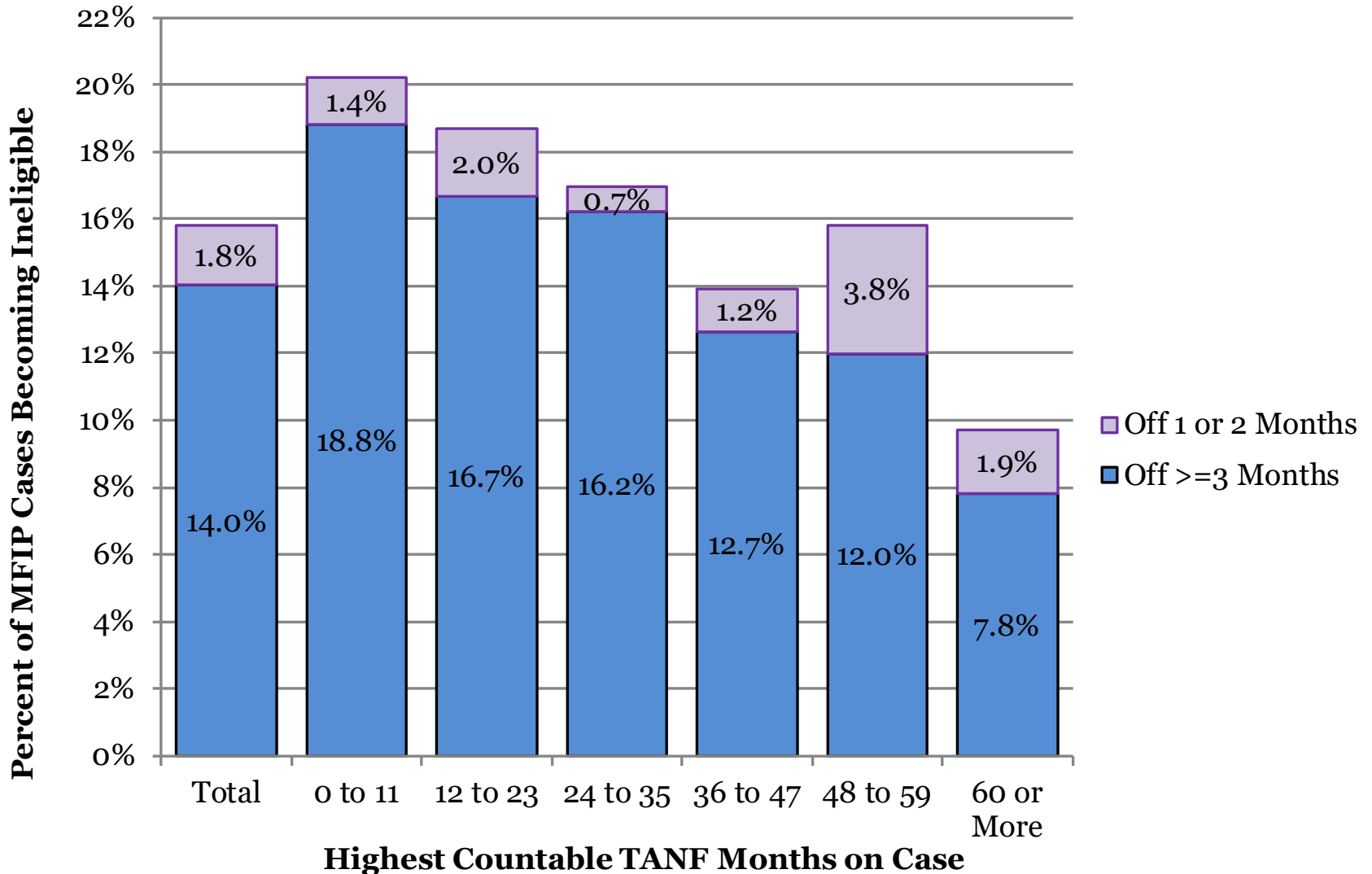


MFIP-Employment Services
County-Wide Indicators
July-September 2020

Published January 29, 2021

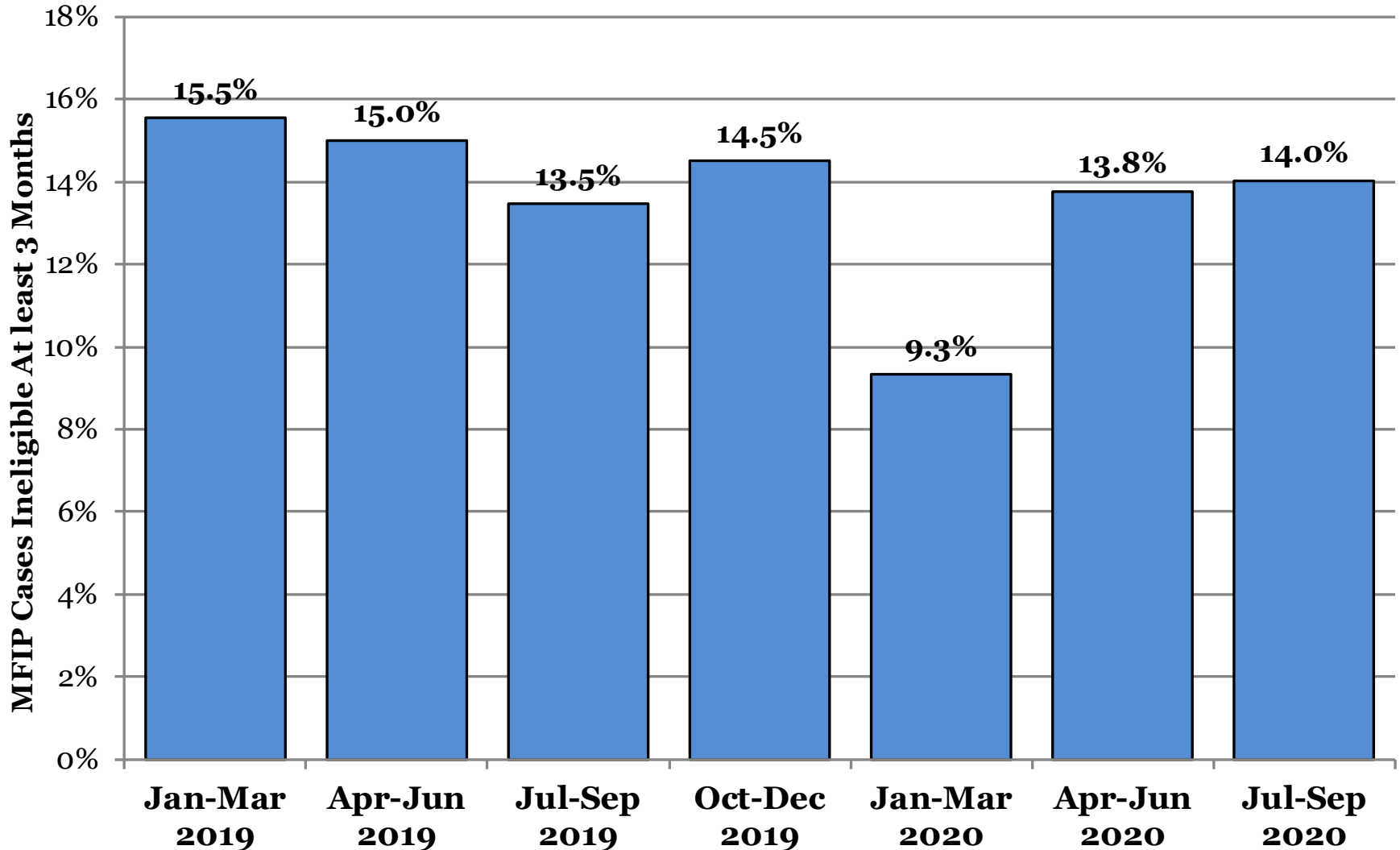
Compiled by Health and Wellness Services Administration, Office of Research & Evaluation

1. Cases Leaving MFIP* Over Jul-Sep 2020, Ineligible on MAXIS in Following Months



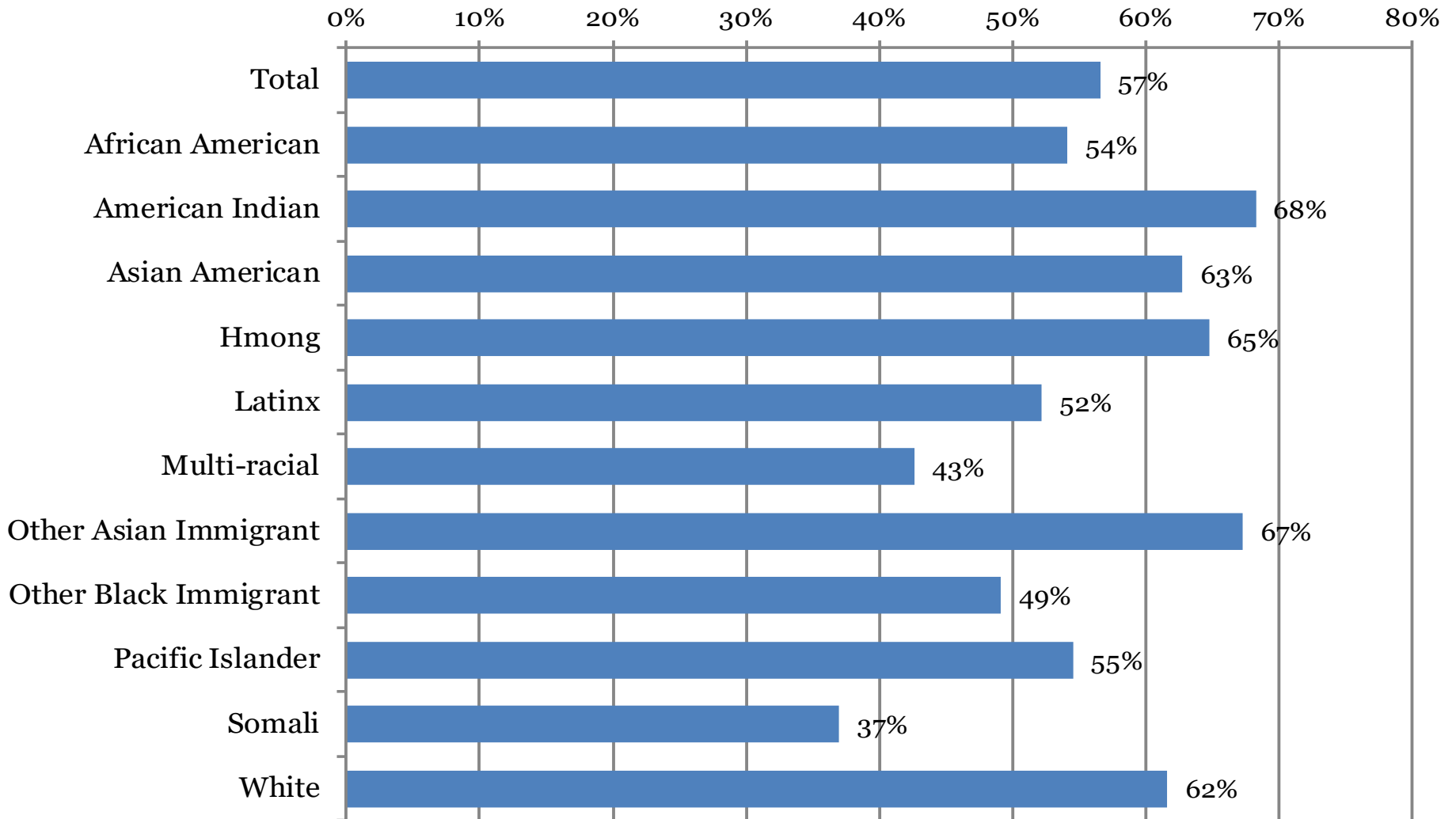
*Note: All parents in case ineligible for both MFIP cash and MFIP food portion anywhere in Minnesota
 Total cases eligible in any month of quarter = 4,246

1a. Cases Leaving MFIP* For At least Three Months, Percent of Cases Open in Past Seven Quarters



*Note: All parents in case ineligible for both MFIP cash and MFIP food portion anywhere in Minnesota

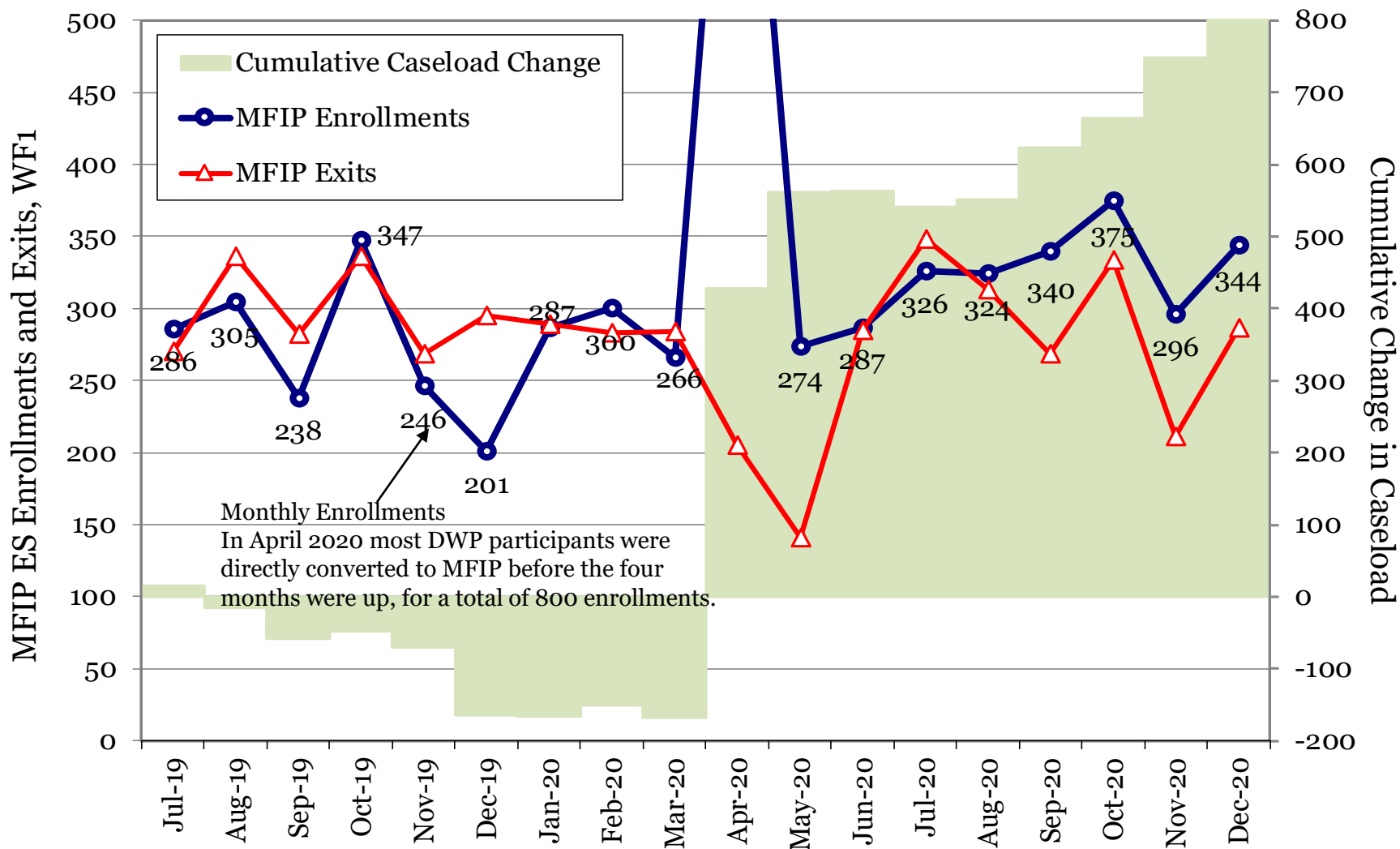
3. Family Stabilization Services, Percent of Total Parents on MFIP Jul-Sep 2020



Average FSS persons per month on MAXIS = 2,399

Average total persons per month on MAXIS = 4,220

4. MFIP Employment Services WF1 Enrollments and Exits, Prior 18 Months



Monthly Enrollments
In April 2020 most DWP participants were directly converted to MFIP before the four months were up, for a total of 800 enrollments.

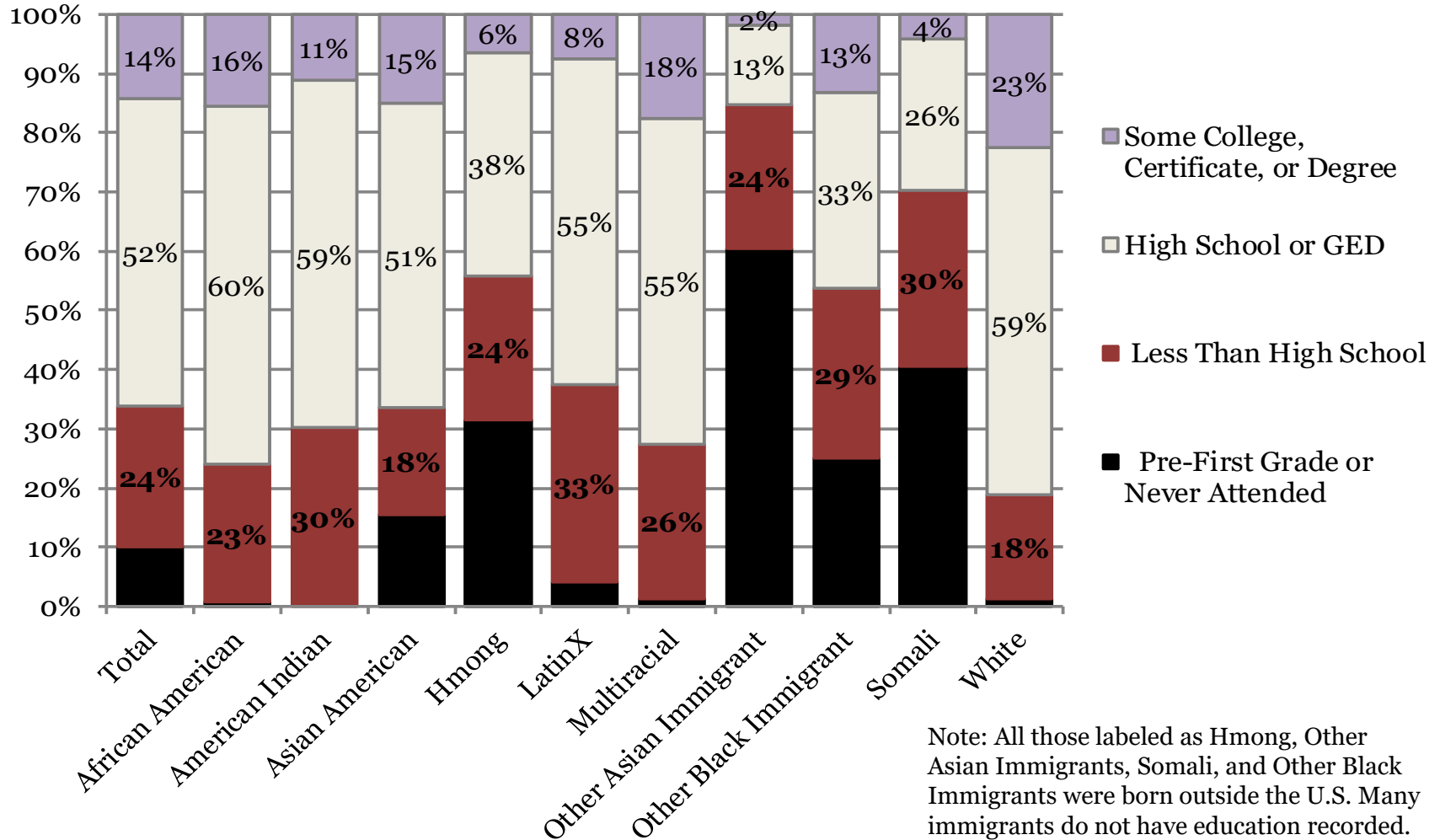
Total MFIP-ES Enrollments = 5,843
 Total MFIP-ES Exits = 5,037
 Note: exits include transfers to other counties

Net Change = 685

Open on WF1 at Start = 3,840
 Open on WF1 at End = 4,646

5. Highest Educational Attainment from WF1 or MAXIS, MFIP Parents Jul-Sep 2020

MFIP Parents Open with ES Agency First of Month and Excludes Child under 1 Exemptions



Percent High School or Higher = 66.1% Percent 1st Grade/Never Attended = 10.1%

6. High School Completion and GED Hours

Average Percent of Participants per Month, July-September 2020

MFIP Parents Open with an ES Agency First of Month, Excludes Child under 1 Exemptions

		Average Participants Without HS Diploma by Monthly Hours				
		Percent of Total				
Agency on First of Month	Total Without GED or HS Diploma	0 Hours	1 to 42 Hours	43 to 86 Hours	87 or More	Any Hours
Assisted Services	840	98.9%	0.5%	0.3%	0.3%	1.1%
American Indian Family Center	31	100.0%	0.0%	0.0%	0.0%	0.0%
Avivo	95	100.0%	0.0%	0.0%	0.0%	0.0%
Goodwill-Easter Seals	59	100.0%	0.0%	0.0%	0.0%	0.0%
HIRED	101	99.0%	0.0%	1.0%	0.0%	1.0%
HAP	264	100.0%	0.0%	0.0%	0.0%	0.0%
Workforce Solutions-AST/Adult	111	99.4%	0.0%	0.0%	0.6%	0.6%
Workforce Solutions-Young Adult	149	95.5%	2.2%	1.1%	1.1%	4.5%
YWCA of St. Paul	30	97.8%	2.2%	0.0%	0.0%	2.2%
Ramsey County Public Health	24	16.4%	72.6%	11.0%	0.0%	83.6%
Extension (all agencies)	165	98.6%	1.4%	0.0%	0.0%	1.4%

7. Work Preparation Activities

Average Percent of Participants by FWL, ESL, and ABE Hours Combined per Month,
July-September 2020 MFIP Parents Open with an ES Agency First of Month,
Excludes Child under 1 Exemptions

Average Participants by Monthly Hours in FWL, ESL, or ABE

Agency on First of Month	Total Active	0 Hours	Percent of Total			Any Hours
			1 to 42 Hours	43 to 86 Hours	87 or More	
Assisted Services	2,540	99.4%	0.5%	0.0%	0.1%	0.6%
American Indian Family Center	111	100.0%	0.0%	0.0%	0.0%	0.0%
Avivo	294	98.2%	1.5%	0.1%	0.2%	1.8%
Goodwill-Easter Seals	270	100.0%	0.0%	0.0%	0.0%	0.0%
HIRED	382	99.5%	0.5%	0.0%	0.0%	0.5%
HAP	351	99.0%	0.8%	0.2%	0.1%	1.0%
Workforce Solutions-AST/Adult	490	99.5%	0.3%	0.0%	0.2%	0.5%
Workforce Solutions-Young Adult	442	99.6%	0.3%	0.0%	0.1%	0.4%
YWCA of St. Paul	200	100.0%	0.0%	0.0%	0.0%	0.0%
Ramsey County Public Health	31	100.0%	0.0%	0.0%	0.0%	0.0%
Extension (all agencies)	642	100.0%	0.0%	0.0%	0.0%	0.0%

8. Training up to 12 Months and 13 or More Months

Average Percent of Total Participants by Training Hours Per Month, July-September 2020
MFIP Parents Open with an ES Agency First of Month, Excludes Child under 1 Exemptions

Average Participants by Monthly Hours in Training Activities						
Agency on First of Month	Total Active	Percent of Total	Percent of Total			
			0 Hours	1 to 42 Hours	43 to 86 Hours	87 or More Hours
Assisted Services	2,540	98.5%	0.5%	0.5%	0.6%	1.5%
American Indian Family Center	111	100.0%	0.0%	0.0%	0.0%	0.0%
Avivo	294	99.3%	0.2%	0.2%	0.2%	0.7%
Goodwill-Easter Seals	270	99.3%	0.2%	0.2%	0.2%	0.7%
HIRED	382	98.9%	0.3%	0.2%	0.6%	1.1%
HAP	351	99.8%	0.0%	0.2%	0.0%	0.2%
Workforce Solutions-AST/Adult	490	96.8%	1.1%	0.8%	1.3%	3.2%
Workforce Solutions-Young Adult	442	97.1%	0.8%	1.1%	1.0%	2.9%
YWCA of St. Paul	200	99.7%	0.3%	0.0%	0.0%	0.3%
Ramsey County Public Health	31	100.0%	0.0%	0.0%	0.0%	0.0%
Extension Services (any agency)	642	99.4%	0.5%	0.1%	0.0%	0.6%

9. All Education and Training Hours

Average Participants by Hours Per Month, July-September 2020

Total high school completion, GED, ESL, FWL, ABE, and training hours combined

MFIP Parents Open with an ES Agency First of Month, Excludes Child under 1 Exemptions

Average Participants by Monthly Hours in Any Education Activity						
Agency on First of Month	Total Active	0 Hours	Percent of Total			Any Hours
			1 to 42 Hours	43 to 86 Hours	87 or More	
Assisted Services	2,540	97.5%	1.1%	0.6%	0.8%	2.5%
American Indian Family Center	111	100.0%	0.0%	0.0%	0.0%	0.0%
Avivo	294	97.5%	1.7%	0.3%	0.5%	2.5%
Goodwill-Easter Seals	270	99.3%	0.2%	0.2%	0.2%	0.7%
HIRED	382	98.0%	1.0%	0.4%	0.6%	2.0%
HAP	351	98.8%	0.8%	0.4%	0.1%	1.2%
Workforce Solutions-AST/Adult	490	96.1%	1.4%	0.8%	1.6%	3.9%
Workforce Solutions-Young Adult	442	95.1%	1.8%	1.6%	1.5%	4.9%
YWCA of St. Paul	200	99.0%	0.7%	0.3%	0.0%	1.0%
Ramsey County Public Health	31	26.1%	64.1%	9.8%	0.0%	73.9%
Extension (all agencies)	642	99.0%	0.9%	0.1%	0.0%	1.0%

10. MFIP Cases Monthly Work Participation Rates, Past 12 Months

Excludes cases with 2-parents, off cash grant, with 1-3 sanctions, or on FSS

