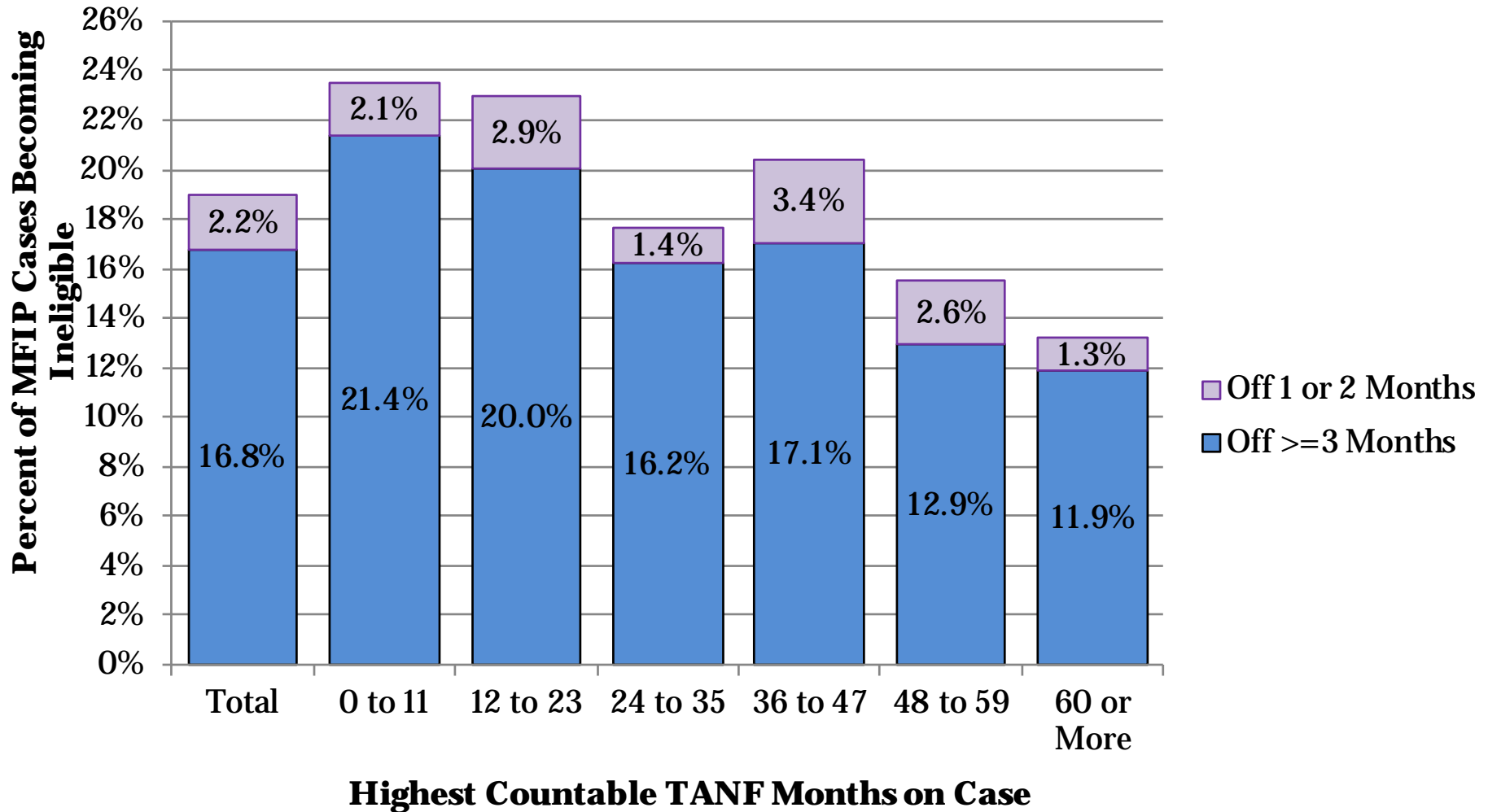


MFIP-Employment Services
County-Wide Indicators,
October-December, 2017

Published April 23, 2018

Compiled by Health and Wellness Services Administration, Office of Research & Evaluation

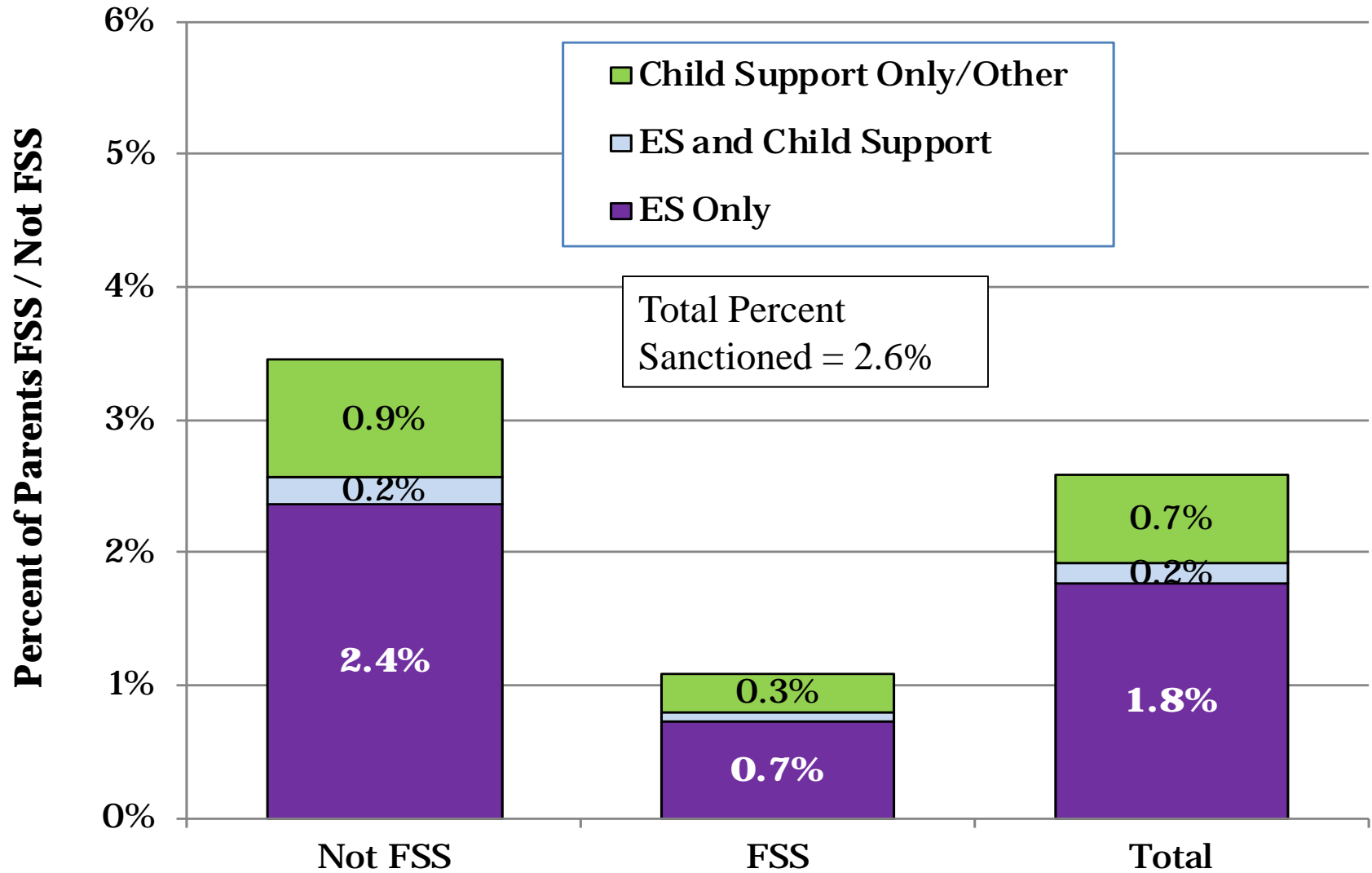
1. Cases Leaving MFIP* Over Oct-Dec 2017, Ineligible on MAXIS in Following Months



*Note: All parents ineligible for both MFIP cash and MFIP food portion anywhere in Minnesota

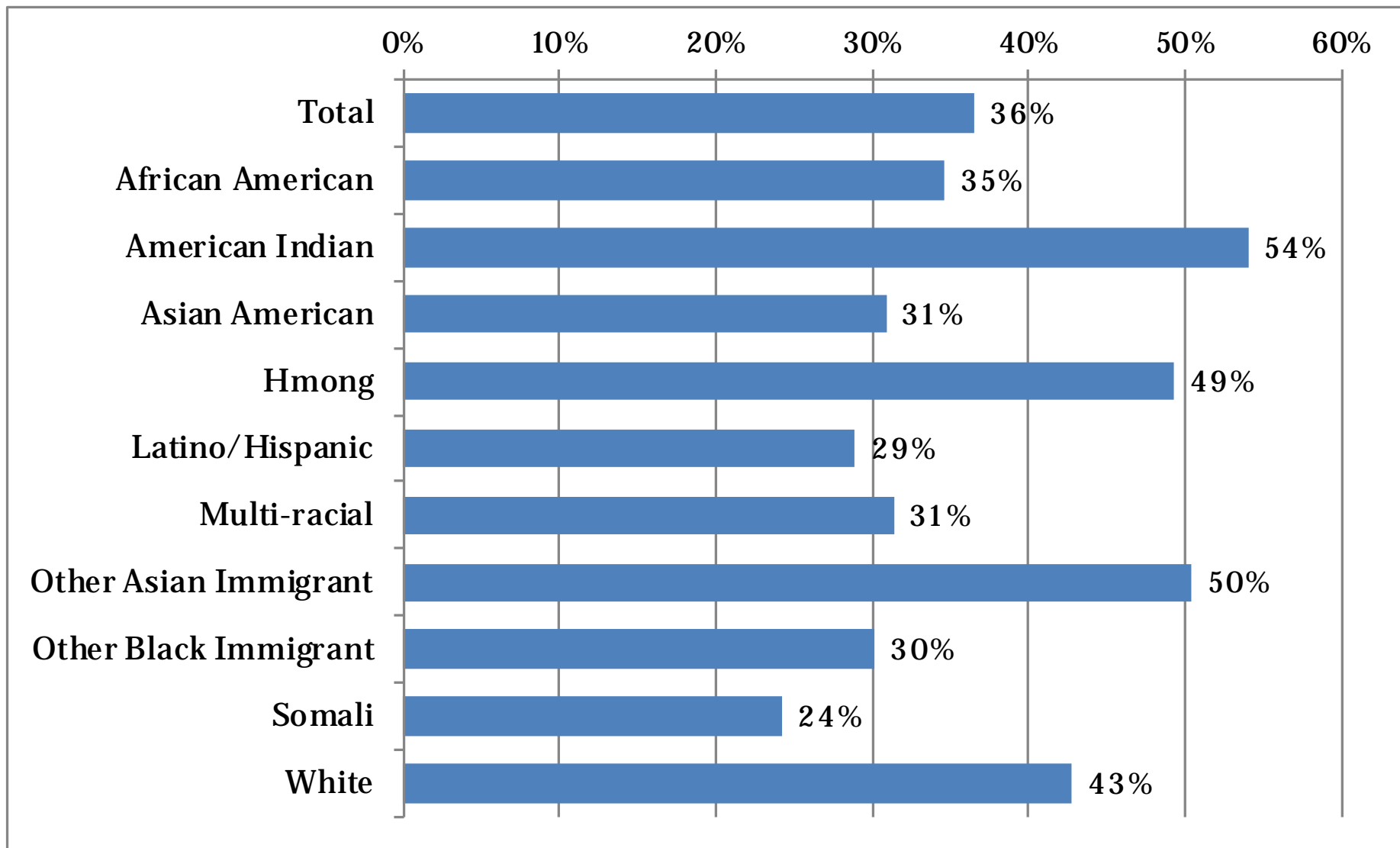
Total cases eligible in any month of quarter = 4,470

2. MFIP Parents, Sanction Rates Per Month Oct-Dec 2017



Average MFIP Parents Eligible per month on MAXIS:
Not FSS = 2,813 FSS = 1,615

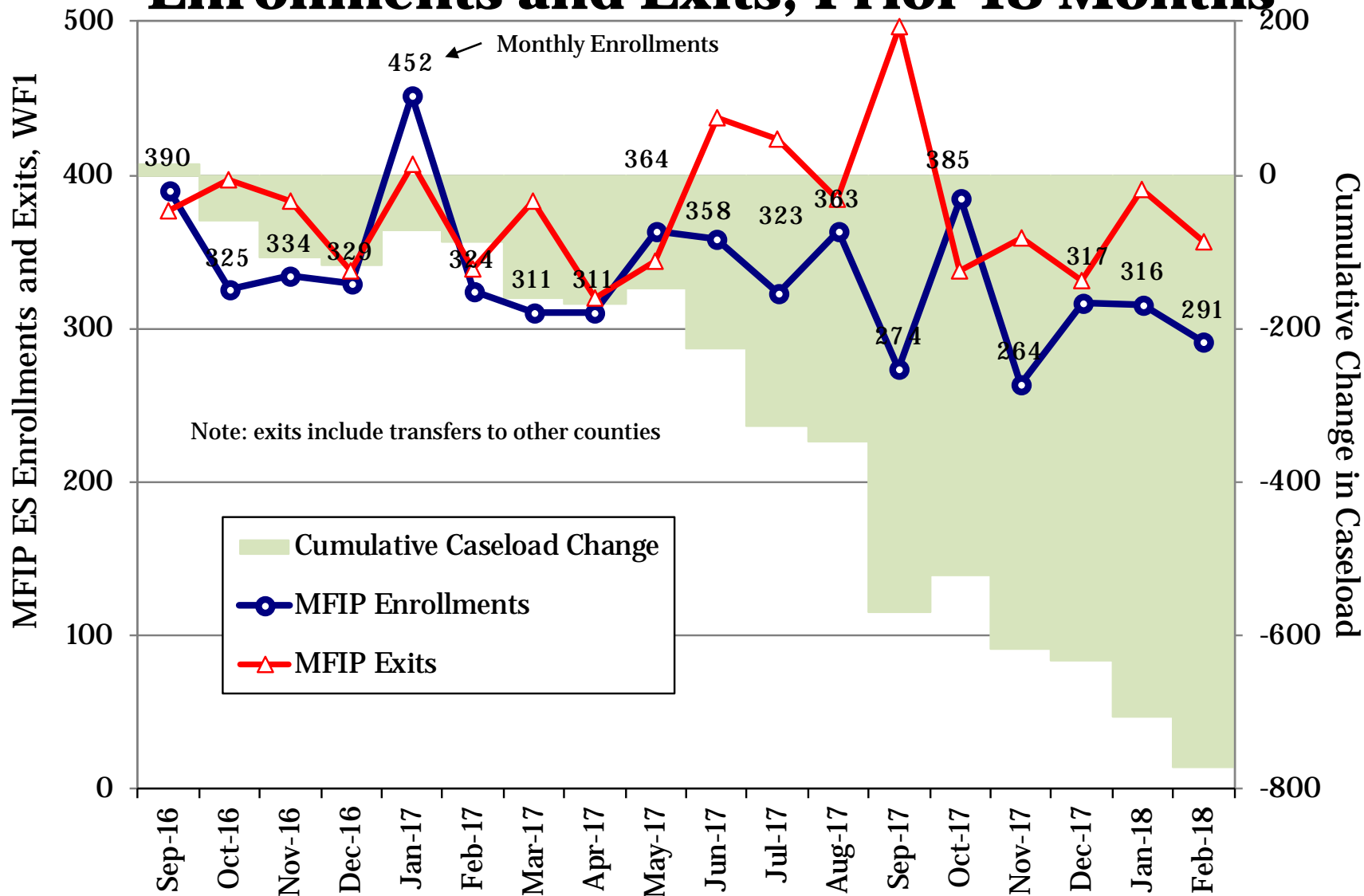
3. Family Stabilization Services, Percent of Total Parents on MFIP Oct-Dec 2017



Average FSS persons per month on MAXIS = 1,615

Average total persons per month on MAXIS = 4,428

4. MFIP Employment Services WF1 Enrollments and Exits, Prior 18 Months



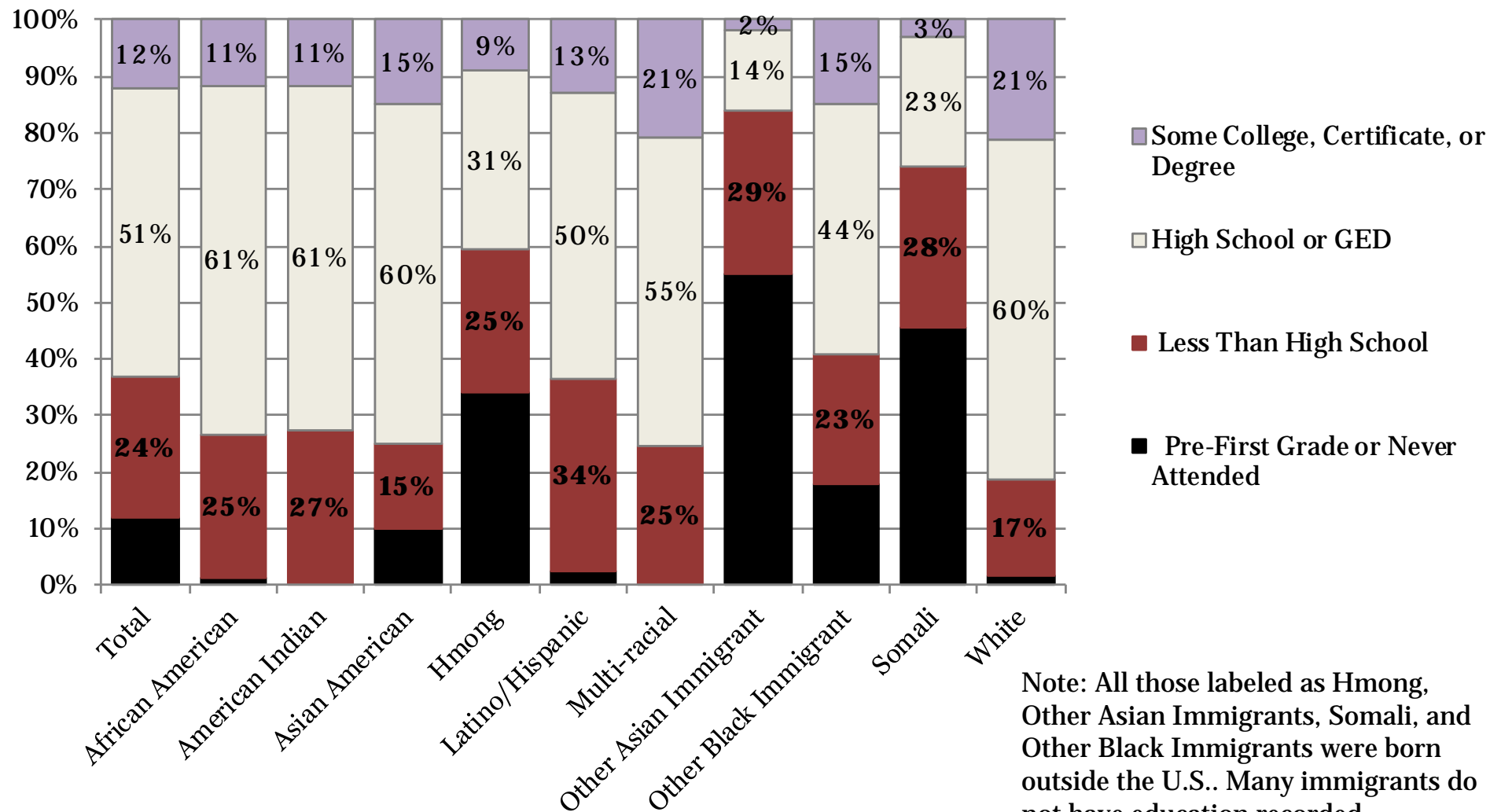
Total MFIP-ES Enrollments = 6,031
 Total MFIP-ES Exits = 6,801

Net Change = -770

Open on WF1 at Start = 5,276
 Open on WF1 at End = 4,506

5. Highest Educational Attainment from WF1 or MAXIS, MFIP Parents Oct-Dec 2017

MFIP Parents Open with ES Agency First of Month and Excludes Child under 1 Exemptions



Note: All those labeled as Hmong, Other Asian Immigrants, Somali, and Other Black Immigrants were born outside the U.S.. Many immigrants do not have education recorded.

Percent High School or Higher = 62.4% Percent 1st Grade/Never Attended = 12.9%

6. High School Completion and GED Hours

Average Percent of Participants per Month, October-December 2017

MFIP Parents Open with an ES Agency First of Month and Excludes Child under 1 Exemptions

Agency on First of Month	Total Without GED or HS Diploma	Percent of Total				Any Hours
		0 Hours	1 to 42 Hours	43 to 86 Hours	87 or More	
Assisted Services	1,065	98.7%	0.8%	0.3%	0.2%	1.3%
American Indian Family Center	23	91.3%	8.7%	0.0%	0.0%	8.7%
Employment Action Center	158	100.0%	0.0%	0.0%	0.0%	0.0%
Goodwill-Easter Seals	114	97.4%	1.5%	1.2%	0.0%	2.6%
HIRED-Age 22 and Older	138	99.3%	0.5%	0.2%	0.0%	0.7%
HIRED-Young Parents Under 22	88	97.7%	0.8%	0.0%	1.5%	2.3%
Hmong American Partnership	351	100.0%	0.0%	0.0%	0.0%	0.0%
Workforce Solutions-AST	151	97.4%	1.8%	0.7%	0.2%	2.6%
YWCA	41	95.9%	2.4%	0.8%	0.8%	4.1%
Ramsey County Public Health	45	16.2%	27.2%	56.6%	0.0%	83.8%
Workforce Solutions-EXS	267	97.9%	2.1%	0.0%	0.0%	2.1%

7. Work Preparation Activities,

Average Percent of Participants by FWL, ESL, and ABE Hours per Month Combined,
October-December 2017 MFIP Parents Open with an ES Agency First of Month
and Excludes Child under 1 Exemptions

Agency on First of Month	Total Active	Percent of Total				Any Hours
		0 Hours	1 to 42 Hours	43 to 86 Hours	87 or More	
Assisted Services	3,033	94.7%	2.9%	2.2%	0.2%	5.3%
American Indian Family Center	88	99.6%	0.4%	0.0%	0.0%	0.4%
Employment Action Center	507	94.5%	3.0%	2.2%	0.3%	5.5%
Goodwill-Easter Seals	444	94.0%	3.8%	1.6%	0.7%	6.0%
HIRED-Age 22 and Older	442	97.6%	1.4%	1.0%	0.0%	2.4%
HIRED-Young Parents Under 22	244	99.3%	0.3%	0.4%	0.0%	0.7%
Hmong American Partnership	459	82.2%	8.5%	8.9%	0.4%	17.8%
Workforce Solutions-AST	595	97.9%	1.7%	0.3%	0.1%	2.1%
YWCA	254	99.7%	0.0%	0.3%	0.0%	0.3%
Ramsey County Public Health	47	100.0%	0.0%	0.0%	0.0%	0.0%
Workforce Solutions-EXS	908	99.6%	0.3%	0.1%	0.0%	0.4%

8. Training up to 12 Months and 13 or More Months

Average Percent of Total Participants by Training Hours Per Month, October-December 2017
 MFIP Parents Open with an ES Agency First of Month and Excludes Child under 1 Exemptions

Agency on First of Month	Total Active	Percent of Total				
		0 Hours	1 to 42 Hours	43 to 86 Hours	87 or More	Any Hours
Assisted Services	3,033	94.7%	2.9%	2.2%	0.2%	5.3%
American Indian Family Center	88	99.6%	0.4%	0.0%	0.0%	0.4%
Employment Action Center	507	94.5%	3.0%	2.2%	0.3%	5.5%
Goodwill-Easter Seals	444	94.0%	3.8%	1.6%	0.7%	6.0%
HIRED-Age 22 and Older	442	97.6%	1.4%	1.0%	0.0%	2.4%
HIRED-Young Parents Under 22	244	99.3%	0.3%	0.4%	0.0%	0.7%
Hmong American Partnership	459	82.2%	8.5%	8.9%	0.4%	17.8%
Workforce Solutions-AST	595	97.9%	1.7%	0.3%	0.1%	2.1%
YWCA	254	99.7%	0.0%	0.3%	0.0%	0.3%
Ramsey County Public Health	47	100.0%	0.0%	0.0%	0.0%	0.0%
Workforce Solutions-EXS	908	99.6%	0.3%	0.1%	0.0%	0.4%

9. All Education and Training Hours,

Average Participants by Hours Per Month, October-December 2017

Total high school completion, GED, ESL, FWL, ABE, and training hours combined

MFIP Parents Open with an ES Agency First of Month and Excludes Child under 1 Exemptions

Agency on First of Month	Total Active	Percent of Total				Any Hours
		0 Hours	1 to 42 Hours	43 to 86 Hours	87 or More	
Assisted Services	3,033	89.6%	4.6%	3.7%	2.1%	10.4%
American Indian Family Center	88	95.5%	3.4%	1.1%	0.0%	4.5%
Employment Action Center	507	89.5%	3.5%	3.9%	3.1%	10.5%
Goodwill-Easter Seals	444	88.1%	5.3%	4.0%	2.6%	11.9%
HIRED-Age 22 and Older	442	93.1%	3.0%	1.9%	2.0%	6.9%
HIRED-Young Parents Under 22	244	89.7%	3.6%	3.1%	3.6%	10.3%
Hmong American Partnership	459	81.2%	8.6%	9.5%	0.7%	18.8%
Workforce Solutions-AST	595	92.2%	4.3%	1.9%	1.7%	7.8%
YWCA	254	94.0%	2.6%	1.6%	1.8%	6.0%
Ramsey County Public Health	47	16.3%	26.2%	57.4%	0.0%	83.7%
Workforce Solutions-EXS	908	97.1%	1.8%	0.6%	0.6%	2.9%

10. MFIP Cases Monthly Work Participation Rates, Past 15 Months

Excludes cases with 2-parents, off cash grant, with 1-3 sanctions, or on FSS

