

MFIP-Employment Services

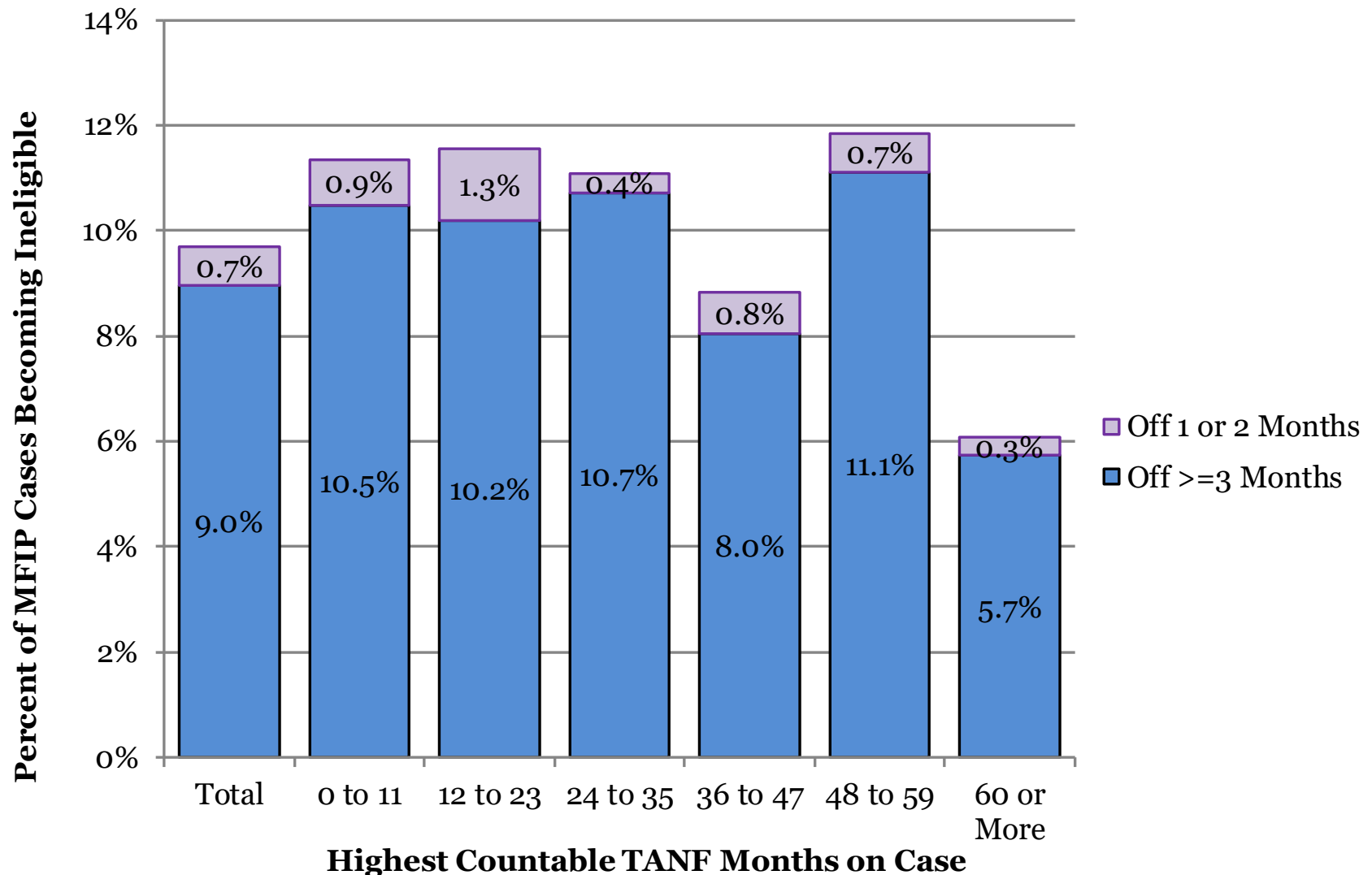
# County-Wide Indicators

## October-December 2020

Published April 20, 2021

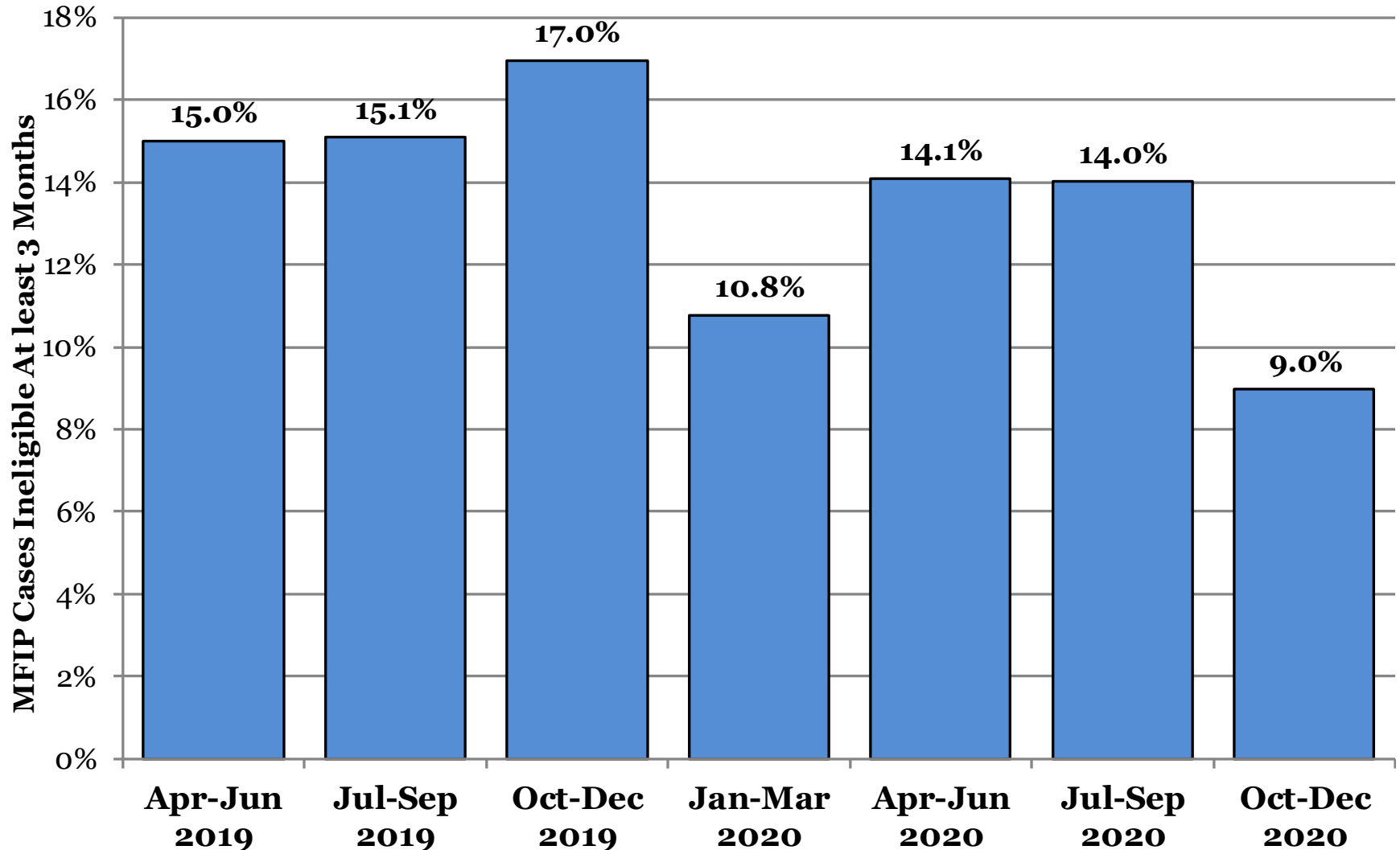
Compiled by Health and Wellness Services Administration, Office of Research & Evaluation

# 1. Cases Leaving MFIP\* Over Oct-Dec 2020, Ineligible on MAXIS in Following Months



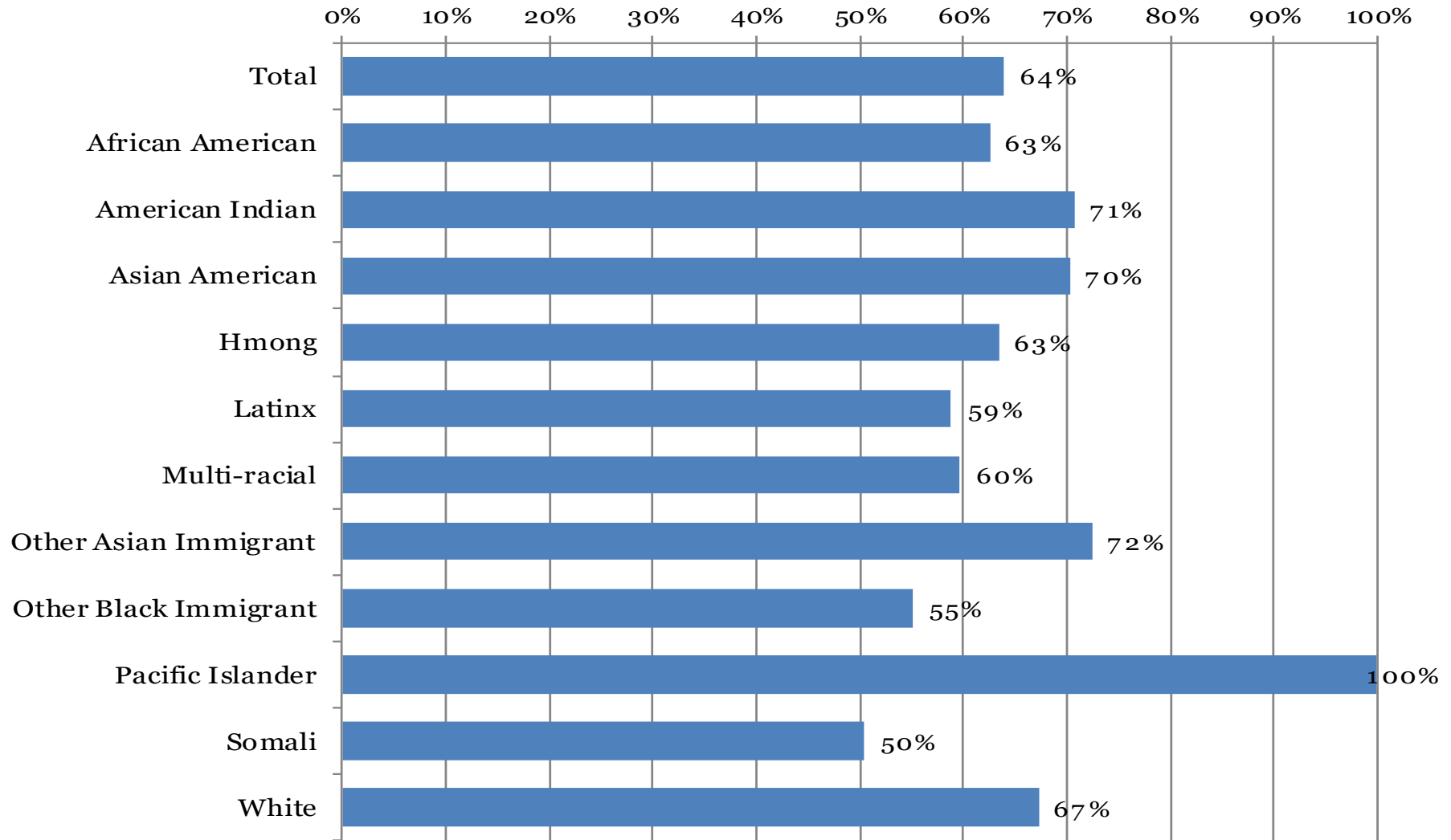
\*Note: All parents in case ineligible for both MFIP cash and MFIP food portion anywhere in Minnesota  
Total cases eligible in any month of quarter = 4,459

# 1a. Cases Leaving MFIP\* For At least Three Months, Percent of Cases Open in Past Seven Quarters



\*Note: All parents in case ineligible for both MFIP cash and MFIP food portion anywhere in Minnesota

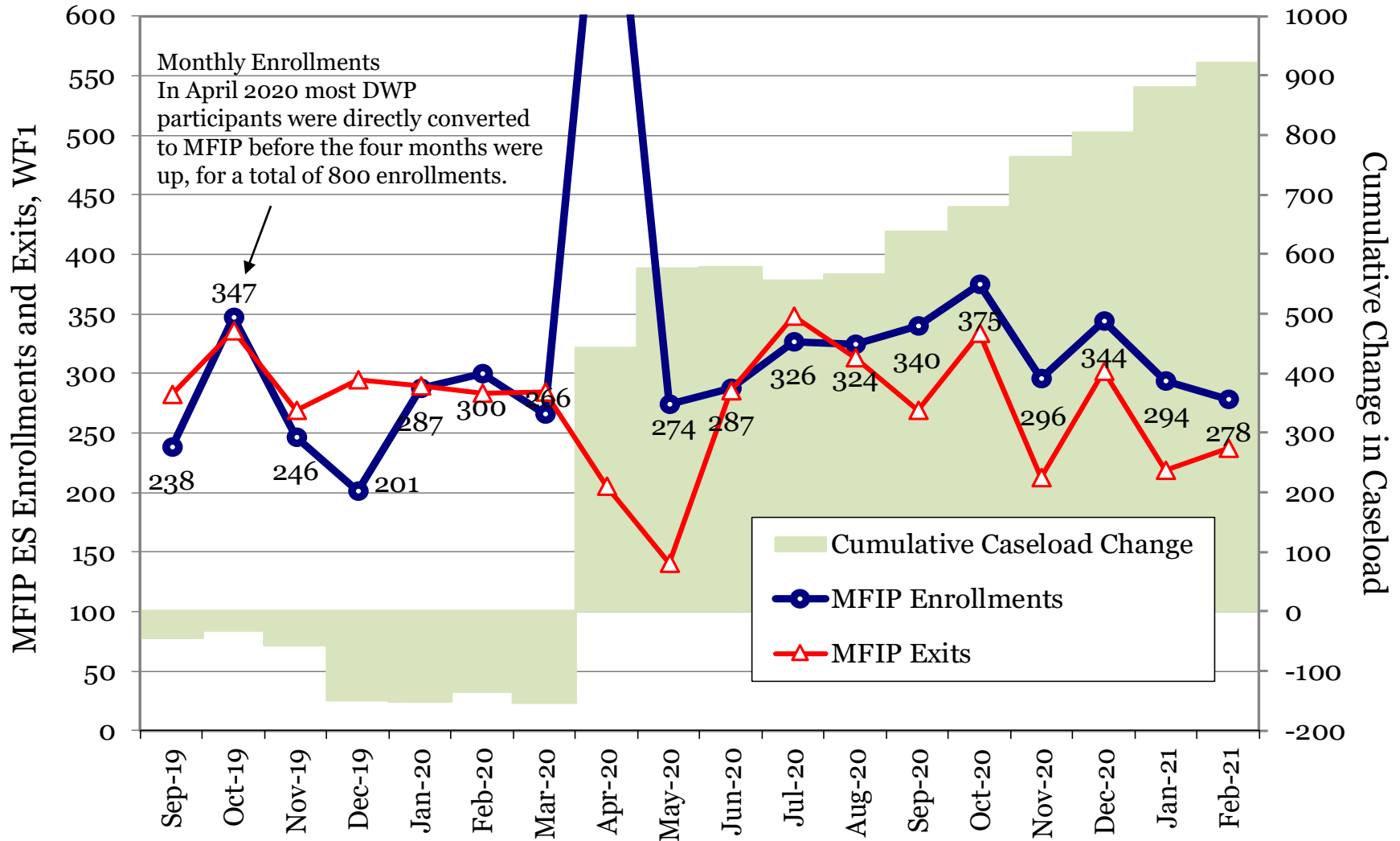
### 3. Family Stabilization Services, Percent of Total Parents on MFIP Oct-Dec 2020



Average FSS persons per month on MAXIS = 2,911

Average total persons per month on MAXIS = 4,552

# 4. MFIP Employment Services WF1 Enrollments and Exits, Prior 18 Months



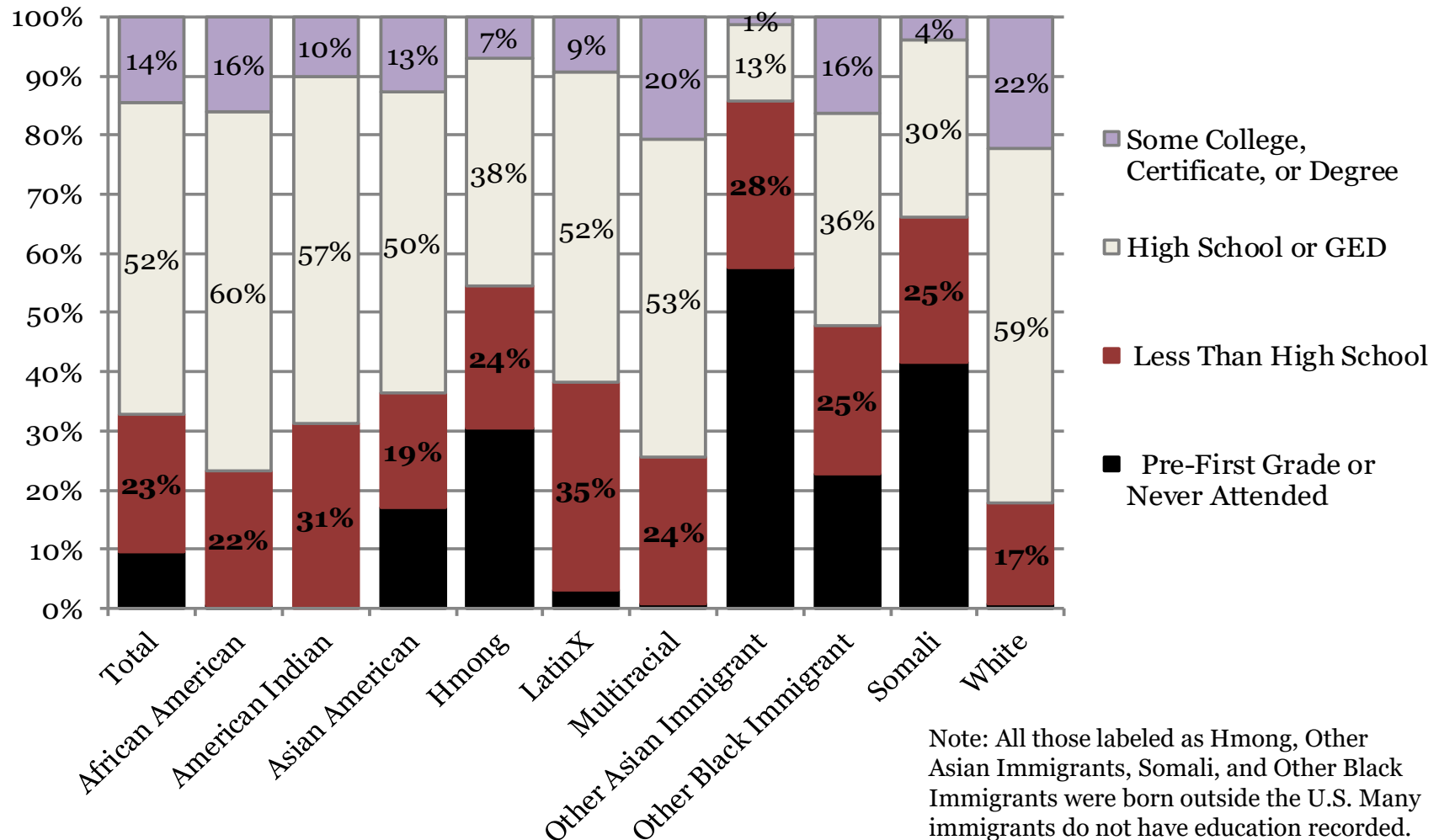
Total MFIP-ES Enrollments = 5,824  
 Total MFIP-ES Exits = 4,903  
 Note: exits include transfers to other counties

Net Change = 919

Open on WF1 at Start = 3,825  
 Open on WF1 at End = 4,744

# 5. Highest Educational Attainment from WF1 or MAXIS, MFIP Parents Oct-Dec 2020

MFIP Parents Open with ES Agency First of Month and Excludes Child under 1 Exemptions



Percent High School or Higher = 66.4%    Percent 1<sup>st</sup> Grade/Never Attended = 9.5%

# 6. High School Completion and GED Hours

Average Percent of Participants per Month, October-December 2020

MFIP Parents Open with an ES Agency First of Month, Excludes Child under 1 Exemptions

	Average Participants Without HS Diploma by Monthly Hours					
			Percent of Total			
Agency on First of Month	Total Without GED or HS Diploma	0 Hours	1 to 42 Hours	43 to 86 Hours	87 or More	Any Hours
<b>Assisted Services</b>	<b>1,024</b>	<b>99.1%</b>	<b>0.5%</b>	<b>0.3%</b>	<b>0.2%</b>	<b>0.9%</b>
American Indian Family Center	39	100.0%	0.0%	0.0%	0.0%	0.0%
Avivo	109	100.0%	0.0%	0.0%	0.0%	0.0%
Goodwill-Easter Seals	84	100.0%	0.0%	0.0%	0.0%	0.0%
HIRED	121	98.6%	0.8%	0.6%	0.0%	1.4%
HAP	271	100.0%	0.0%	0.0%	0.0%	0.0%
Workforce Solutions-AST/Adult	187	99.1%	0.0%	0.4%	0.5%	0.9%
Workforce Solutions-Young Adult	178	96.4%	2.3%	0.8%	0.6%	3.6%
YWCA of St. Paul	35	100.0%	0.0%	0.0%	0.0%	0.0%
Ramsey County Public Health	26	26.9%	37.2%	35.9%	0.0%	73.1%
Extension (all agencies)	190	98.6%	1.4%	0.0%	0.0%	1.4%

# 7. Work Preparation Activities

**Average Percent of Participants by FWL, ESL, and ABE Hours Combined per Month,  
October-December 2020 MFIP Parents Open with an ES Agency First of Month,  
Excludes Child under 1 Exemptions**

Average Participants by Monthly Hours in FWL, ESL, or ABE						
			Percent of Total			
Agency on First of Month	Total Active	0 Hours	1 to 42 Hours	43 to 86 Hours	87 or More	Any Hours
<b>Assisted Services</b>	<b>3,202</b>	<b>99.0%</b>	<b>0.7%</b>	<b>0.1%</b>	<b>0.1%</b>	<b>1.0%</b>
American Indian Family Center	140	100.0%	0.0%	0.0%	0.0%	0.0%
Avivo	360	97.6%	2.1%	0.2%	0.1%	2.4%
Goodwill-Easter Seals	340	100.0%	0.0%	0.0%	0.0%	0.0%
HIRED	456	99.0%	0.8%	0.1%	0.0%	1.0%
HAP	364	98.0%	1.7%	0.2%	0.1%	2.0%
Workforce Solutions-AST/Adult	751	98.7%	0.5%	0.4%	0.4%	1.3%
Workforce Solutions-Young Adult	549	99.7%	0.2%	0.0%	0.1%	0.3%
YWCA of St. Paul	242	100.0%	0.0%	0.0%	0.0%	0.0%
Ramsey County Public Health	31	100.0%	0.0%	0.0%	0.0%	0.0%
Extension (all agencies)	777	100.0%	0.0%	0.0%	0.0%	0.0%



# 8. Training up to 12 Months and 13 or More Months

**Average Percent of Total Participants by Training Hours Per Month, October-December 2020**  
**MFIP Parents Open with an ES Agency First of Month, Excludes Child under 1 Exemptions**

Average Participants by Monthly Hours in Training Activities						
			Percent of Total			
Agency on First of Month	Total Active	0 Hours	1 to 42 Hours	43 to 86 Hours	87 or More	Any Hours
<b>Assisted Services</b>	<b>3,202</b>	<b>98.1%</b>	<b>0.4%</b>	<b>0.6%</b>	<b>0.8%</b>	<b>1.9%</b>
American Indian Family Center	140	100.0%	0.0%	0.0%	0.0%	0.0%
Avivo	360	99.2%	0.1%	0.5%	0.3%	0.8%
Goodwill-Easter Seals	340	99.5%	0.1%	0.1%	0.3%	0.5%
HIRED	456	99.1%	0.1%	0.1%	0.7%	0.9%
HAP	364	99.7%	0.0%	0.1%	0.2%	0.3%
Workforce Solutions-AST/Adult	751	95.9%	1.2%	1.2%	1.8%	4.1%
Workforce Solutions-Young Adult	549	96.6%	0.4%	1.5%	1.5%	3.4%
YWCA of St. Paul	242	99.4%	0.4%	0.1%	0.0%	0.6%
Ramsey County Public Health	31	100.0%	0.0%	0.0%	0.0%	0.0%
Extension Services (any agency)	777	98.8%	0.3%	0.7%	0.2%	1.2%

# 9. All Education and Training Hours

Average Participants by Hours Per Month, October-December 2020

Total high school completion, GED, ESL, FWL, ABE, and training hours combined

MFIP Parents Open with an ES Agency First of Month, Excludes Child under 1 Exemptions

## Average Participants by Monthly Hours in Any Education Activity

Agency on First of Month	Total Active	0 Hours	Percent of Total			Any Hours
			1 to 42 Hours	43 to 86 Hours	87 or More	
<b>Assisted Services</b>	<b>3,202</b>	<b>96.7%</b>	<b>1.3%</b>	<b>0.9%</b>	<b>1.1%</b>	<b>3.3%</b>
American Indian Family Center	140	100.0%	0.0%	0.0%	0.0%	0.0%
Avivo	360	96.8%	2.2%	0.6%	0.4%	3.2%
Goodwill-Easter Seals	340	99.5%	0.1%	0.1%	0.3%	0.5%
HIRED	456	97.7%	1.1%	0.4%	0.8%	2.3%
HAP	364	97.7%	1.7%	0.3%	0.3%	2.3%
Workforce Solutions-AST/Adult	751	94.2%	1.8%	1.7%	2.3%	5.8%
Workforce Solutions-Young Adult	549	94.8%	1.3%	2.1%	1.8%	5.2%
YWCA of St. Paul	242	99.4%	0.4%	0.1%	0.0%	0.6%
Ramsey County Public Health	31	30.4%	38.0%	31.5%	0.0%	69.6%
Extension (all agencies)	777	98.2%	0.9%	0.7%	0.2%	1.8%

# 10. MFIP Cases Monthly Work Participation Rates, Past 12 Months

Excludes cases with 2-parents, off cash grant, with 1-3 sanctions, or on FSS

