

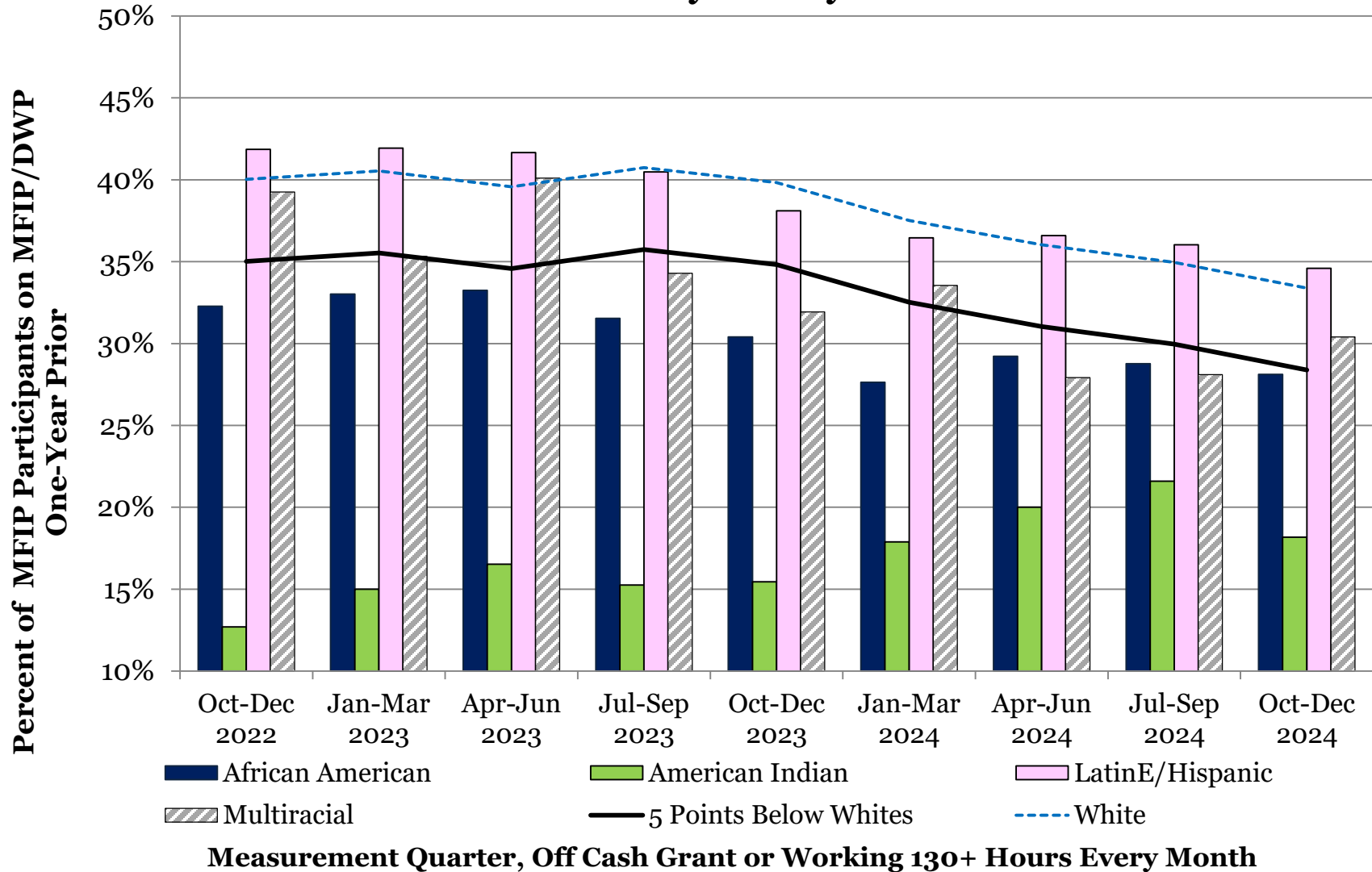
One-Year Self-Support Index by Race and Ethnicity, Ramsey County

Shading indicates a disparity of at least 5 percentage points below whites

Race/Ethnicity	Oct-Dec 2022	Jan-Mar 2023	Apr-Jun 2023	Jul-Sep 2023	Oct-Dec 2023	Jan-Mar 2024	Apr-Jun 2024	Jul-Sep 2024	Oct-Dec 2024	Persons in Index for Last Quarter
County Total	42.3%	42.0%	41.6%	40.2%	38.7%	36.5%	37.0%	37.1%	36.5%	3,404
African American	32.3%	33.0%	33.3%	31.5%	30.4%	27.6%	29.2%	28.8%	28.1%	1,465
American Indian	12.7%	15.0%	16.5%	15.3%	15.4%	17.9%	20.0%	21.6%	18.2%	121
Asian American	66.1%	66.9%	62.1%	60.3%	53.0%	54.2%	53.0%	54.4%	59.2%	125
Hmong	54.7%	56.3%	55.7%	45.8%	46.6%	40.0%	39.2%	38.9%	40.6%	64
LatinE/Hispanic	41.9%	41.9%	41.7%	40.5%	38.1%	36.5%	36.6%	36.0%	34.6%	266
Multiracial	39.2%	35.3%	40.1%	34.3%	31.9%	33.5%	27.9%	28.1%	30.4%	171
Other Asian Immigrant	71.5%	68.2%	67.5%	62.7%	57.9%	52.8%	58.5%	61.0%	61.2%	196
Other Black Immigrant	58.8%	52.4%	49.6%	52.6%	57.1%	55.8%	55.9%	54.4%	53.6%	140
Somali	74.0%	68.4%	69.7%	76.5%	73.9%	76.0%	74.6%	75.4%	71.9%	167
White	40.0%	40.5%	39.6%	40.7%	39.8%	37.5%	36.0%	35.0%	33.4%	623

Avg Difference Last 4 Quarters										
Disparity with Whites										
African American	-7.7%	-7.5%	-6.3%	-9.2%	-9.4%	-9.9%	-6.8%	-6.2%	-5.3%	-7.0%
American Indian	-27.3%	-25.5%	-23.0%	-25.5%	-24.4%	-19.6%	-16.0%	-13.4%	-15.2%	-16.1%
Asian American	26.1%	26.3%	22.5%	19.6%	13.2%	16.7%	17.0%	19.4%	25.8%	19.7%
Hmong	14.7%	15.8%	16.1%	5.1%	6.8%	2.5%	3.2%	3.9%	7.2%	4.2%
LatinE/Hispanic	1.8%	1.4%	2.1%	-0.3%	-1.7%	-1.1%	0.6%	1.1%	1.2%	0.4%
Multiracial	-0.8%	-5.2%	0.5%	-6.5%	-7.9%	-4.0%	-8.1%	-6.9%	-3.0%	-5.5%
Other Asian Immigrant	31.4%	27.7%	27.9%	22.0%	18.0%	15.2%	22.5%	26.1%	27.8%	22.9%
Other Black Immigrant	18.8%	11.8%	10.0%	11.9%	17.3%	18.3%	19.9%	19.5%	20.2%	19.5%
Somali	33.9%	27.9%	30.2%	35.8%	34.1%	38.5%	38.5%	40.5%	38.5%	39.0%
White	0.0%	0.0%	0.0%	0.0%	0.0%	0.0%	0.0%	0.0%	0.0%	0.0%

One-Year Self-Support Index by Race and Ethnicity, Ramsey County



Three-Year Self-Support Index by Race and Ethnicity, Ramsey County

Shading indicates a disparity of at least 5 percentage points below whites

Race/Ethnicity	Oct-Dec 2022	Jan-Mar 2023	Apr-Jun 2023	Jul-Sep 2023	Oct-Dec 2023	Jan-Mar 2024	Apr-Jun 2024	Jul-Sep 2024	Oct-Dec 2024	Persons in Index for Last Quarter
County Total	56.6%	56.2%	57.5%	56.7%	56.2%	56.5%	55.8%	54.6%	54.2%	4,257
African American	44.9%	44.2%	44.9%	42.3%	41.6%	41.6%	40.2%	39.8%	40.6%	1,787
American Indian	25.2%	26.8%	28.1%	29.4%	31.5%	33.8%	31.4%	28.0%	26.6%	124
Asian American	80.5%	75.4%	76.7%	80.5%	79.0%	78.5%	77.5%	79.0%	79.2%	183
Hmong	67.6%	69.5%	71.2%	72.4%	71.3%	73.3%	73.5%	72.8%	72.9%	140
LatinE/Hispanic	55.8%	54.1%	56.2%	59.6%	58.9%	62.0%	59.5%	59.6%	57.7%	345
Multiracial	47.0%	49.7%	48.4%	49.5%	48.3%	46.3%	49.2%	46.9%	48.7%	191
Other Asian Immigrant	81.9%	82.1%	85.4%	85.6%	84.5%	83.9%	84.4%	84.0%	84.2%	323
Other Black Immigrant	81.6%	79.0%	78.6%	80.1%	80.5%	79.8%	79.1%	81.2%	79.3%	145
Somali	87.3%	86.9%	84.1%	85.7%	83.6%	84.1%	84.4%	82.1%	84.1%	201
White	53.4%	55.1%	56.1%	55.5%	56.7%	56.9%	56.5%	55.2%	54.8%	789
DHS Results	Apr-22 to Mar-23 Difference from Result				Apr-23 to Mar-24 Difference from Result					
Annualized range of Expected Performance	Upper	63.8%	-7.3		Upper	66.3%	-9.6			
DHS Weighted Result	Lower	55.9%	0.6		Lower	56.3%	0.5			
		56.5%				56.7%				

Expected and actual annual performance ranges are from DHS Management Indicators Report.

Difference with Whites	Avg Last 4 Quarters									
African American	-8.5%	-10.9%	-11.2%	-13.2%	-15.1%	-15.3%	-16.3%	-15.3%	-14.1%	-15.3%
American Indian	-28.1%	-28.3%	-28.0%	-26.1%	-25.2%	-23.1%	-25.1%	-27.2%	-28.1%	-25.9%
Asian American	27.1%	20.3%	20.7%	25.0%	22.4%	21.6%	21.0%	23.8%	24.5%	22.7%
Hmong	14.3%	14.4%	15.1%	16.9%	14.7%	16.4%	17.0%	17.7%	18.1%	17.3%
LatinE/Hispanic	2.4%	-1.0%	0.1%	4.1%	2.2%	5.1%	3.0%	4.4%	2.9%	3.9%
Multiracial	-6.3%	-5.4%	-7.6%	-6.0%	-8.4%	-10.6%	-7.3%	-8.3%	-6.1%	-8.1%
Other Asian Immigrant	28.6%	27.0%	29.4%	30.1%	27.8%	27.0%	27.9%	28.8%	29.5%	28.3%
Other Black Immigrant	28.3%	23.9%	22.5%	24.6%	23.9%	22.9%	22.6%	26.0%	24.6%	24.0%
Somali	34.0%	31.8%	28.1%	30.2%	27.0%	27.2%	27.9%	26.9%	29.3%	27.8%

Three-Year Self-Support Index, Ramsey County

