

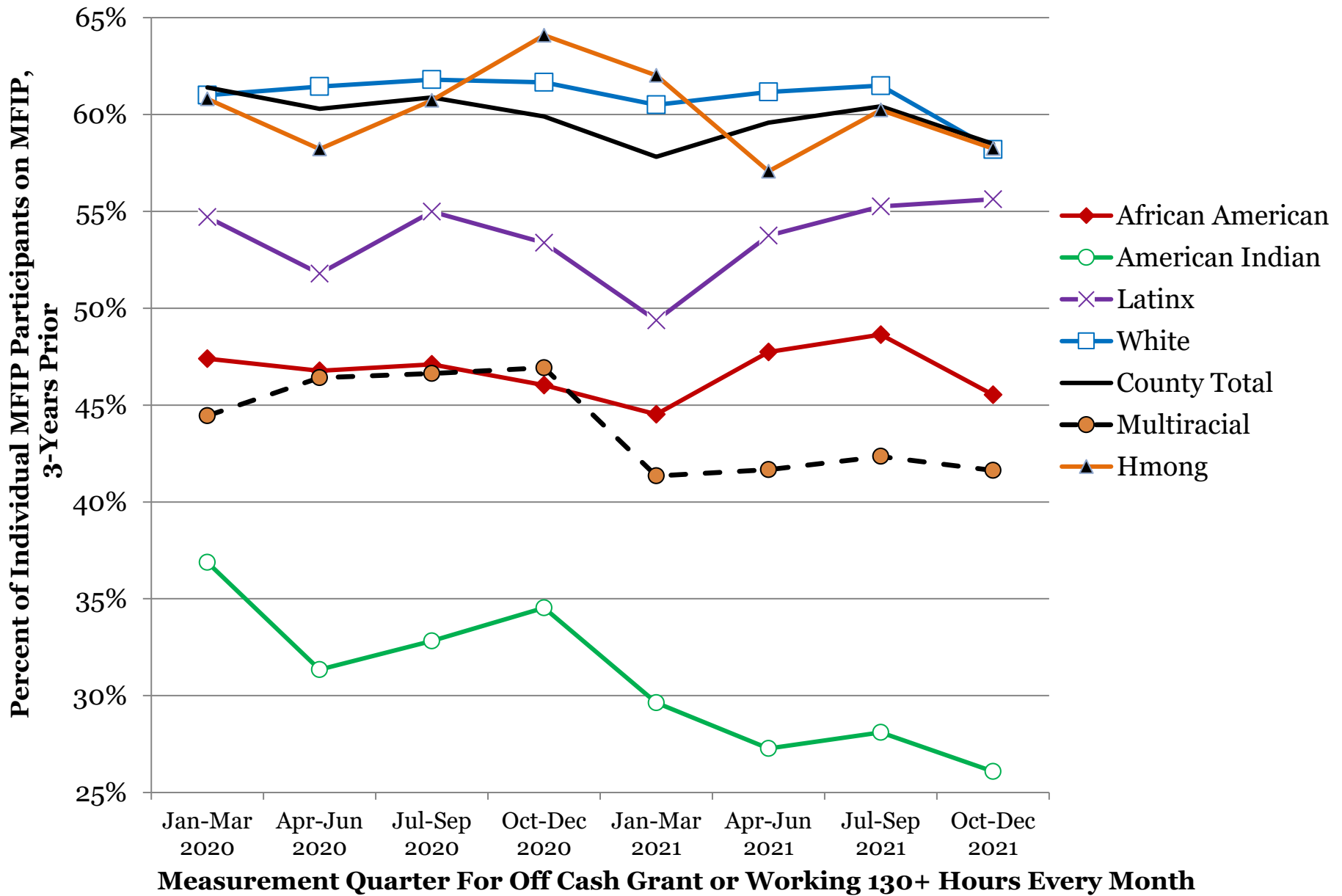
Three-Year Self-Support Index by Race and Ethnicity, Ramsey County

Race/Ethnicity	Jan-Mar	Apr-Jun	Jul-Sep	Oct-Dec	Jan-Mar	Apr-Jun	Jul-Sep	Oct-Dec	Persons in Index for Last Quarter
	2020	2020	2020	2020	2021	2021	2021	2021	
County Total	61.4%	60.3%	60.9%	59.9%	57.8%	59.6%	60.4%	58.5%	5,020
African American	47.4%	46.8%	47.1%	46.0%	44.5%	47.7%	48.6%	45.5%	2,025
American Indian	36.9%	31.3%	32.8%	34.5%	29.6%	27.3%	28.1%	26.1%	138
Asian American	85.4%	84.7%	84.4%	81.9%	80.7%	79.3%	79.7%	81.1%	159
Hmong	60.8%	58.2%	60.7%	64.1%	62.0%	57.1%	60.2%	58.2%	170
Latinx	54.7%	51.8%	55.0%	53.4%	49.4%	53.8%	55.3%	55.6%	320
Multiracial	44.4%	46.4%	46.6%	46.9%	41.3%	41.7%	42.3%	41.6%	185
Other Asian Immigrant	85.3%	84.2%	82.8%	80.6%	79.0%	80.8%	84.2%	86.1%	416
Other Black Immigrant	79.3%	79.2%	78.7%	80.5%	77.7%	79.4%	81.3%	80.0%	215
Somali	84.1%	81.7%	85.4%	86.7%	87.3%	89.2%	87.5%	88.8%	481
White	61.0%	61.4%	61.8%	61.7%	60.5%	61.2%	61.5%	58.2%	885
DHS Results	Apr-19 to Mar-20	Difference from Actual		Apr-20 to Mar-21	Difference from Actual				
Annualized range of Expected Performance	63.2%	-1.6	Upper	68.2%	-8.5	Upper			
DHS Weighted Results	60.5%	1.2	Lower	57.9%	1.8	Lower			
	61.7%			59.8%					

Expected and actual annual performance ranges are from DHS Management Indicators Report.

Difference with Whites	Avg Last 4 Quarters								
African American	-13.6%	-14.7%	-14.7%	-15.6%	-16.0%	-13.4%	-12.9%	-12.7%	-13.7%
American Indian	-24.1%	-30.1%	-29.0%	-27.1%	-30.9%	-33.9%	-33.4%	-32.1%	-32.6%
Asian American	24.4%	23.2%	22.6%	20.3%	20.2%	18.2%	18.2%	22.9%	19.9%
Hmong	-0.2%	-3.2%	-1.1%	2.4%	1.5%	-4.1%	-1.3%	0.0%	-0.9%
Latinx	-6.3%	-9.7%	-6.8%	-8.3%	-11.1%	-7.4%	-6.2%	-2.6%	-6.8%
Multiracial	-16.5%	-15.0%	-15.2%	-14.7%	-19.2%	-19.5%	-19.1%	-16.6%	-18.6%
Other Asian Immigrant	24.3%	22.7%	21.0%	18.9%	18.5%	19.6%	22.7%	27.9%	22.2%
Other Black Immigrant	18.3%	17.8%	16.9%	18.8%	17.2%	18.3%	19.8%	21.8%	19.3%
Somali	23.1%	20.2%	23.6%	25.1%	26.8%	28.0%	26.0%	30.6%	27.9%

Three-Year Self-Support Index, Ramsey County



One-Year Self-Support Index by Race and Ethnicity, Ramsey County

Race/Ethnicity	Jan-Mar	Apr-Jun	Jul-Sep	Oct-Dec	Jan-Mar	Apr-Jun	Jul-Sep	Oct-Dec	Persons in Index for Last Quarter
	2020	2020	2020	2020	2021	2021	2021	2021	
County Total	44.7%	42.0%	43.4%	41.9%	38.6%	42.4%	41.6%	41.4%	4,984
African American	34.5%	31.7%	34.7%	34.1%	30.5%	34.1%	32.4%	29.9%	2,027
American Indian	17.7%	16.9%	22.0%	16.8%	18.3%	22.1%	22.9%	24.5%	155
Asian American	67.4%	71.5%	69.1%	57.9%	49.2%	57.3%	58.3%	63.6%	228
Hmong	41.2%	44.9%	38.4%	38.7%	36.4%	43.5%	49.7%	48.8%	170
Latinx	43.4%	39.1%	40.9%	36.1%	32.9%	37.9%	36.2%	38.7%	390
Multiracial	29.4%	29.7%	28.2%	32.9%	32.4%	34.9%	29.3%	30.2%	189
Other Asian Immigrant	63.8%	60.6%	60.0%	59.6%	58.3%	63.1%	64.7%	68.8%	420
Other Black Immigrant	60.4%	60.3%	60.9%	60.6%	49.3%	54.5%	60.2%	59.3%	194
Somali	75.2%	69.8%	77.2%	78.2%	77.0%	80.5%	81.8%	77.0%	274
White	44.9%	41.7%	39.3%	36.8%	35.7%	36.1%	36.2%	39.3%	901
Disparity with Whites									Avg Difference Last 4 Quarters
African American	-10.4%	-10.0%	-4.6%	-2.7%	-5.2%	-2.1%	-3.8%	-9.4%	-5.1%
American Indian	-27.2%	-24.7%	-17.3%	-20.0%	-17.3%	-14.1%	-13.3%	-14.8%	-14.9%
Asian American	22.5%	29.9%	29.8%	21.1%	13.6%	21.2%	22.1%	24.3%	20.3%
Hmong	-3.7%	3.3%	-0.9%	1.8%	0.8%	7.4%	13.5%	9.5%	7.8%
Latinx	-1.6%	-2.6%	1.6%	-0.8%	-2.7%	1.8%	0.0%	-0.6%	-0.4%
Multiracial	-15.5%	-12.0%	-11.1%	-3.9%	-3.3%	-1.3%	-6.9%	-9.1%	-5.1%
Other Asian Immigrant	18.9%	18.9%	20.7%	22.8%	22.6%	27.0%	28.5%	29.5%	26.9%
Other Black Immigrant	15.5%	18.6%	21.6%	23.8%	13.6%	18.3%	24.0%	20.0%	19.0%
Somali	30.3%	28.1%	37.9%	41.4%	41.4%	44.4%	45.6%	37.7%	42.3%
White	0.0%	0.0%	0.0%	0.0%	0.0%	0.0%	0.0%	0.0%	0.0%

One-Year Self-Support Index by Race and Ethnicity, Ramsey County

